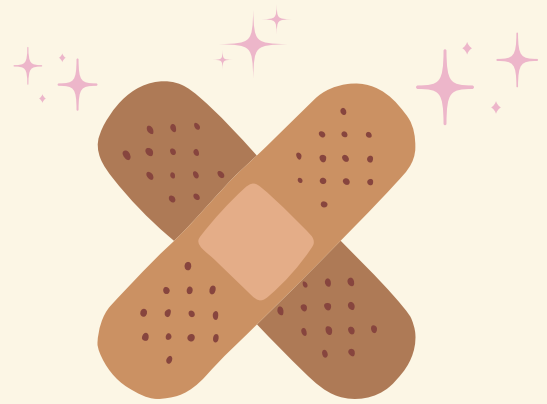


HOSA CONTACT & SUPPORT



HOSA Mississippi Office

JaBria Fogg

Mississippi HOSA State Advisor

✉ Mailing Address:

MS HOSA

PO Box 771

Jackson, MS 39205

☎ **601-359-2371**

✉ **jfogg@mdek12.org**

HOSA National Headquarters

HOSA–Future Health Professionals

✉ Mailing Address:

HOSA- Future Health Professionals

548 Silicon Drive, Suite 101

Southlake, TX 76092

☎ **1-800-321-HOSA**

🌐 www.hosa.org

✉ **info@hosa.org**

Membership and Conference Fees

Membership Fee: **\$15** (National \$10 State \$5)

Fall Leadership Conference Fee: **\$25**

District Competition Fee: **\$15**

State Leadership Conference Fee: **\$40**



IMPORTANT PAYMENT NOTICE

*Only **membership payments** should be mailed to the **National Office**. Checks and Money Orders are accepted. Credit/Debit Card Payments accepted with an additional convenience fee.

*All **conference payments** (e.g., Fall Leadership Conference, Districts, State Leadership Conference, etc.) should be mailed to the **Mississippi HOSA Office**. Checks and Money Orders are accepted only.



IMPORTANT Dates



→ AUGUST ←

- 1: Membership Registration Begins
- 15: FLC Registration Opens

→ SEPTEMBER ←

- 30: FLC Registration Closes

→ OCTOBER ←

- 6: District Registration Open
- 10: Lapel Pin & Tshirt designs due
- 15: Deadline for 100% Affiliation Recognition
- 21: 2025 FLC**
- 23: Affiliation Deadline for District Competitions
- 30: District Registration Closes

→ NOVEMBER ←

- 3-7: HOSA Week
- 12: District Competitions Begin** (Testing & Uploads)
- 21: District Competitions End** (Testing & Uploads)

→ DECEMBER ←

- 1: State Officer Applications Available
- 5: District Competition Results Available
- 30: Deadline to submit State Officer Applications

→ JANUARY ←

- 5: SLC Registration Opens
- 12: MS Scholarship Applications Available
- 30: SLC Registration Closes **(No Late Registrations)**

→ FEBRUARY ←

- 4: Deadline to Request Adjustments to SLC registration **(No Late Registrations)**
- 6: SLC Digital Uploads Deadline
- 13: Deadline to submit MS HOSA scholarship applications

→ MARCH ←

- 4-6: 2026 SLC** (Tentative)

→ APRIL ←

- ILC Registration

→ MAY ←

- 1: 2026 ILC Registration Deadline
- 4: ILC Digital Uploads Deadline
- 15: Deadline to Request adjustments to ILC registration

→ JUNE ←

- 17-20: 2026 ILC**

→ JULY ←

- HOSA Membership Registration Begins