

# OFFICE OF PROFESSIONAL DEVELOPMENT

SPRING 2026 ONLINE



## PROFESSIONAL DEVELOPMENT CATALOG

Registration for these Canvas Courses  
is open from January 12-19, 2026



MISSISSIPPI  
DEPARTMENT OF  
EDUCATION

# REGISTRATION



Go to the [MDE Trumba Calendar](#) between January 12-19, 2026, and complete a registration form for each course. You will receive a confirmation email from the Office of Professional Development.

Note: It is recommended that participants take no more than 2 courses per semester due to workload.



A course invitation from MDE Instructure will be sent to you via email 1-2 business days prior to the course's beginning. Inside the email, click Get Started. Upon signing in, you will see your courses listed on the dashboard.



[Registration is open from January 12-19, 2026](#)

# CEU/SEMI/OSL Information



When appropriate, online courses aligned to Professional Standards for Educational Leaders (PSEL) offer SEMIs and/or OSLs through participants' local Regional Education Service Agency (RESA). These are free of charge with a successful course completion.

While our online courses are free to take, there is a \$15 processing fee for CEUs.

**1 CEU = 10 Hours**

**1 OSL = 12 Hours**

**5 SEMIs = 6.25 Hours**



Registration is open from January 12-19, 2026

# CEU/SEMI/OSL Information



**When will I receive CEUs for completing the course?**

Within two weeks after the course ends, participants who completed all course requirements will receive an email from the course facilitator. The email will include a Certificate of Completion for the course as well as detailed instructions on how to use the Certificate of Completion to apply for CEUs through his/her local RESA. Participants must apply for CEUs within the specified period following the course's end.

**How will I receive my CEUs?**

CEUs will not be physically mailed to participants. Participants will receive an email stating that the CEU certificate is ready and will log in to their MS RESA Services account to download the certificate digitally.

Registration is open from January 12-19, 2026



# CEU/SEMI/OSL Information



**If I complete all course requirements before the end of the course, may I receive my Certificate of Completion early?**

While many courses are self-paced and offer participants the opportunity to complete requirements prior to the course's official end date, Certificates of Completion will not be awarded early. Participants who complete all course requirements by the course's end on March 31, 2025, will receive a Certificate of Completion via email by April 14, 2026.



Registration is open from January 12-19, 2026

# Time Expectations

Each course varies in the amount of time needed to complete all components successfully. As you browse the catalog, use the icons below as a reference for the approximate number of minutes required to complete a course module.

**Note:** Icons indicate how much time participants can expect to take to complete all assignments within each module, including task implementation and screen time.



**Approximately 90  
minutes per module**



**Approximately 120  
minutes per module**



**Approximately 180+  
minutes per module**



Registration is open from January 12-19, 2026

# Course Technology Levels



## Basic

The green icon denotes courses that were developed using basic Canvas features only. These courses include tasks such as watching videos, downloading files, uploading assignments, and posting to discussion boards.



## Moderate

The yellow icon denotes courses that were developed using basic Canvas features as well as up to 2 additional technological tools, such as Padlet or Flipgrid, to engage learners.



## Advanced

The red icon denotes courses that were developed using basic Canvas features as well as a variety of additional technological tools, such as Padlet, Flipgrid, Google Suite, and Zoom, to engage learners.



Registration is open from January 12-19, 2026

# Professional Growth System

## Mississippi Department of Education (MDE) Professional Growth System (PGS) Summary

### Domain I: Lesson Design

Standard 1: Lessons are aligned to standards and represent a coherent sequence of learning.

Standard 2: Lessons have high levels of learning for all students.

I

### Domain II: Student Understanding

Standard 3: The teacher assists students in taking responsibility for learning and monitors student learning.

Standard 4: The teacher provides multiple ways for students to make meaning of content.

II

### Domain III: Culture and Learning Environment

Standard 5: The teacher manages a learning-focused classroom community.

Standard 6: The teacher manages classroom space, time, and resources (including technology when appropriate) effectively for student learning.

Standard 7: The teacher creates and maintains a classroom of respect for all students.

III

### Domain IV: Professional Responsibilities

Standard 8: The teacher engages in professional learning.

Standard 9: The teacher establishes and maintains effective communication with families/guardians.

IV



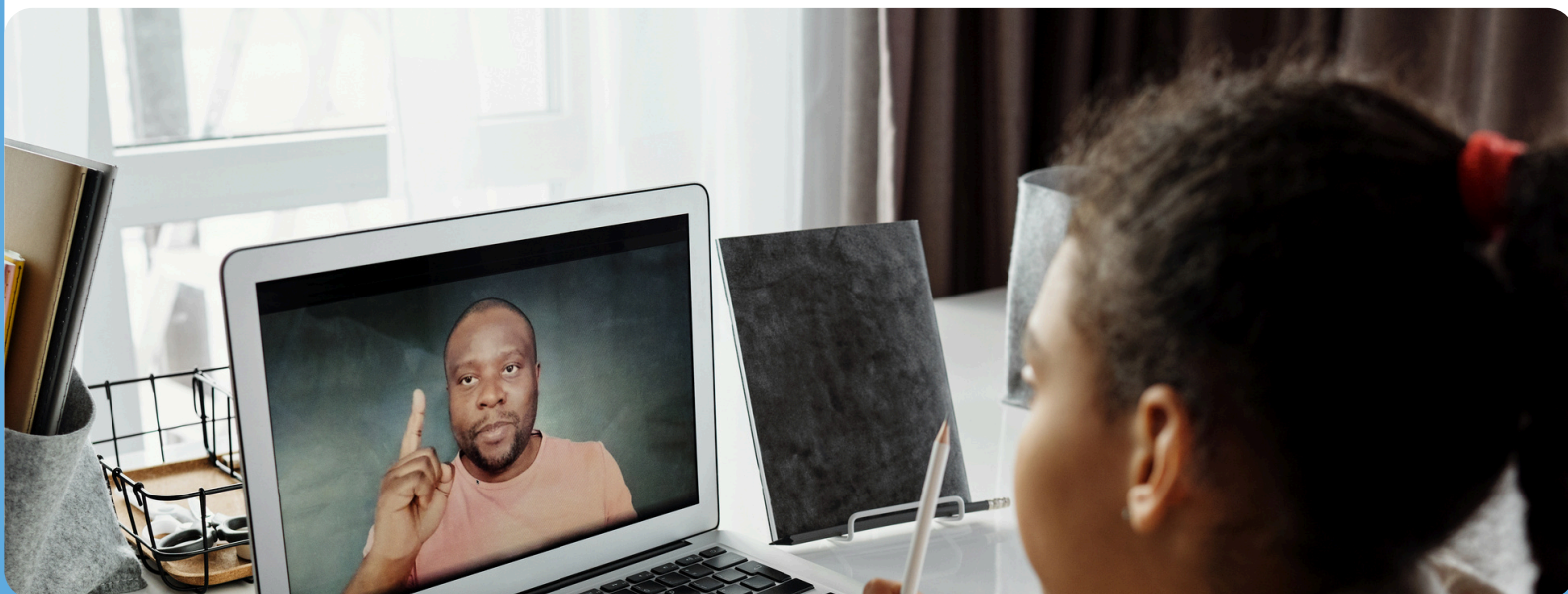
Registration is open from January 12-19, 2026





# Course Listing

Title	Subject Area	Descriptive Icons		
<a href="#"><u>Bridging the Gap: Education and Poverty in Mississippi</u></a>	Cross-Curricular			
<a href="#"><u>Building Brain Power for All Learners</u></a>	Cross-Curricular			
<a href="#"><u>Exploring IDEA: Understanding the 13 Disability Categories</u></a>	Cross-Curricular			
<a href="#"><u>Journey through IDEA: A Practical Guide for Educators</u></a>	Cross-Curricular			
<a href="#"><u>The PLAAFP</u></a>	Special Education			
<a href="#"><u>Teaching with Intention: ADHD Strategies for Classroom Success</u></a>	Cross-Curricular			



[Registration is open from January 12-19, 2026](#)

# Course Descriptions



## Bridging the Gap: Education and Poverty in Mississippi

**Grade Band:** K-12

**Participants:** GenEd Teachers, SpEd Teachers, Instructional Coaches, Administrators

**CEUs|SEMIs|OSLs:** 2.5 | 20 | 2



Moderate  
Technology Level



8 Modules  
≈180+ Minutes/Module



PGS Domain IV

This course is designed for educators dedicated to enhancing their understanding and effectiveness in teaching students from low-income families. Participants will engage in evidence-based practices that address the unique challenges faced by these students, including social, emotional, and academic barriers.



## Building Brain Power for All Learners

**Grade Band:** K-12

**Participants:** GenEd Teachers, SpEd Teachers, Instructional Coaches, Interventionists, Counselors

**CEUs:** 2.5



Moderate  
Technology Level



8 Modules  
≈180+ Minutes/Module



PGS Domain II

This session is ideal for educators working with students aged 3-21. It is designed for those who want to better understand executive functioning and its impact on the classroom. Participants will learn strategies to enhance the learning environment by gaining a deeper understanding of how students learn. By applying proactive approaches to behavior management and classroom organization, educators can also promote student independence. Ultimately, these efforts will help nurture lifelong learners who not only make academic progress but develop a passion for learning.

Registration is open from January 12-19, 2026

# Course Descriptions



## Exploring IDEA: Understanding the 13 Disability Categories

**Grade Band:** K-12

**Participants:** GenEd Teachers, SpEd Teachers, Instructional Coaches, Administrators, Interventionists, Counselors

**CEUs:** 2.5



Basic  
Technology Level



8 Modules  
≈180+ Minutes/Module



PGS Domain IV

This session provides educators with a comprehensive overview of the 13 disability categories, characteristics of the individual disability categories, and eligibility criteria under IDEA.



## Journey Through IDEA: A Practical Guide for Educators

**Grade Band:** K-12

**Participants:** GenEd Teachers, SpEd Teachers, Instructional Coaches, Interventionists, Counselors, Administrators

**CEUs|SEMI|OSLs:** 2.0 | 15 | 1



Advanced  
Technology Level



8 Modules  
≈180+ Minutes/Module



PGS Domain I

This course is designed to provide educators in Mississippi with a foundational understanding of the Individuals with Disabilities Education Act (IDEA). Participants will gain insights into the legal framework, eligibility criteria, IEP development, student rights, and best practices for supporting students with disabilities. Through engaging activities, discussions, and practical applications, this course aims to equip educators with the knowledge and skills to better serve students with disabilities in compliance with IDEA.

Registration is open from January 12-19, 2026



# Course Descriptions



## *The PLAAFP*

**Grade Band:** K-12

**Participants:** Special Educators, Paraprofessionals, Related Service Providers, General Educators, Counselors

**CEUs|SEMI|OSLs:** 2.0 | 15 | 1



Basic  
Technology Level



8 Modules  
≈150+ Minutes/Module



PGS Domain IV

In this course, participants will study an important component of the IEP - the Present Levels of Academic Achievement and Functional Performance (PLAAFP). Participants will learn how to develop a comprehensive PLAAFP not only compliant with the law, but one that communicates very clearly the student's strengths and needs, helping educators and parents to design and implement an appropriate educational program.



## Teaching with Intention: ADHD Strategies for Classroom Success

**Grade Band:** K-12

**Participants:** GenEd Teachers, SpEd Teachers, Instructional Coaches, Interventionists, Counselors, Administrators

**CEUs:** 2.5



Basic  
Technology Level



7 Modules  
≈180+ Minutes/Module



PGS Domain III

For this CANVAS course, participants will have the opportunity to understand, analyze, and practice strategies to support students with ADHD in the classroom.

Registration is open from January 12-19, 2026



# Contact Information



**Need assistance with MDE Canvas?**  
**[canvas@mdek12.org](mailto:canvas@mdek12.org)**



**Need assistance with MDE Educator Licensure Information?**  
**[teachersupport@mdek12.org](mailto:teachersupport@mdek12.org)**