

OVS in the NSLP/SBP

Office of Child Nutrition

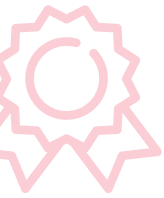
mdek12.org



MISSISSIPPI
DEPARTMENT OF
EDUCATION

Date





1

ALL Students Proficient and Showing Growth in All Assessed Areas



2

EVERY Student Graduates from High School and is Ready for College and Career



3

EVERY Child Has Access to a High-Quality Early Childhood Program

EVERY School Has Effective Teachers and Leaders

4



EVERY Community Effectively Uses a World-Class Data System to Improve Student Outcomes

5



EVERY School and District is Rated “C” or Higher

6



VISION

To create a world-class educational system that gives students the knowledge and skills to be successful in college and the workforce, and to flourish as parents and citizens



MISSION

To provide leadership through the development of policy and accountability systems so that all students are prepared to compete in the global community

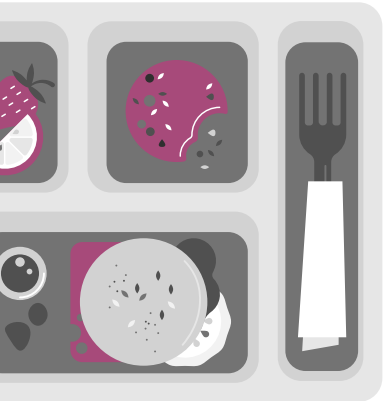
Offer Versus Serve

Basics for NSLP/SBP

Offer Versus Serve (OVS)

OVS is a strategy that allows students to decline some components or items and select foods that they intend to eat.

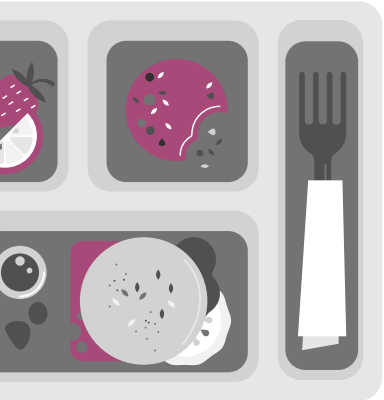
- Reduces food waste and its impact on cost
- Mandatory in the NSLP for high schools
- Optional in SBP (all grades)
- Not available for Snack Service



Basic Requirements

If implementing OVS, the site must:

- OFFER all required meal pattern components in minimum quantities.
- Identify near or at the beginning of the serving line those items that constitute a reimbursable meal.
- Have a trained cashier at the end of the serving line to identify reimbursable meals (*any alternate POS must be pre-approved by the SA*).



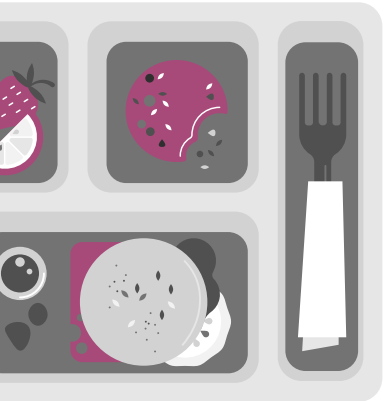
OVS at Lunch

NSLP

OVS Rules at Lunch

7 CFR 210.10 (e) and SP 41 - 2015

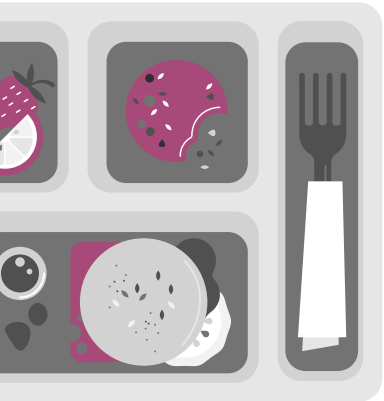
- Students must be allowed to decline 2 of the 5 required components
- Students must have 3 components on their tray
- One of those components must be at least a half a cup of fruit or vegetable.



At the very minimum, the student needs two full components plus a half cup of fruit/veg to be considered a reimbursable meal.

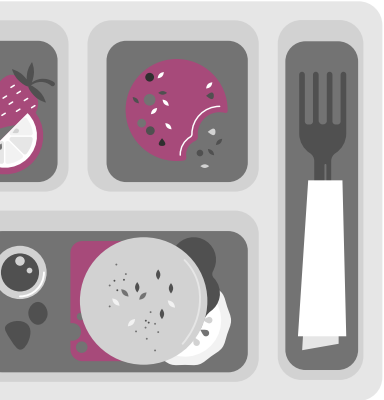
SP 41 – 2015 (OVS Manual Pg. 10)

- If only 3 components are selected and 2 of those are fruit and vegetable, the student may only select the half cup portion for the fruit OR the vegetable. For the other two components, the students must select at least the minimum daily required serving of the components for them to be counted.



For example, if a high school student selects a half cup of corn, a half cup of grapes, and a milk, this is NOT a reimbursable meal!

Knowledge of Meal Pattern is essential to OVS implementation



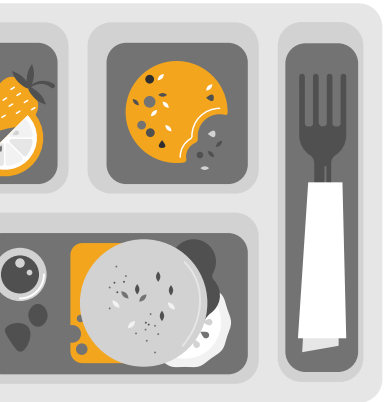
NSLP Meal Pattern – Daily Minimum Requirements			
	K-8	6-8	9-12
Meat	1 oz eq.	1 oz eq.	2 oz eq.
Grain	1 oz eq.	1 oz eq.	2 oz eq.
Vegetable	$\frac{3}{4}$ cup	$\frac{3}{4}$ cup	1 cup
Fruit	$\frac{1}{2}$ cup	$\frac{1}{2}$ cup	1 cup
Milk	1 cup	1 cup	1 cup

Let's Practice!

OVS at Lunch (NSLP)

MENU OVERVIEW

All Items Offered on the Menu for the Day



REQUIRED COMPONENTS	ITEMS OFFERED	COMPONENT CONTRIBUTION
Milk	White Milk	1 cup
	Chocolate Milk	1 cup
Meat	Meatloaf	2 oz eq.
Grain	Roll	2 oz eq.
Fruit	Mandarin Oranges	½ cup
	Pineapple Tidbits	½ cup
Veg	Potatoes	½ cup
	Broccoli	½ cup



Is this a reimbursable meal ?	
Elementary	High School
YES	YES

	Components Served	
	Elementary	High School
Milk	FULL	FULL
Meat	FULL	FULL
Grain	FULL	FULL
Fruit	FULL	PARTIAL
Veg	PARTIAL	PARTIAL



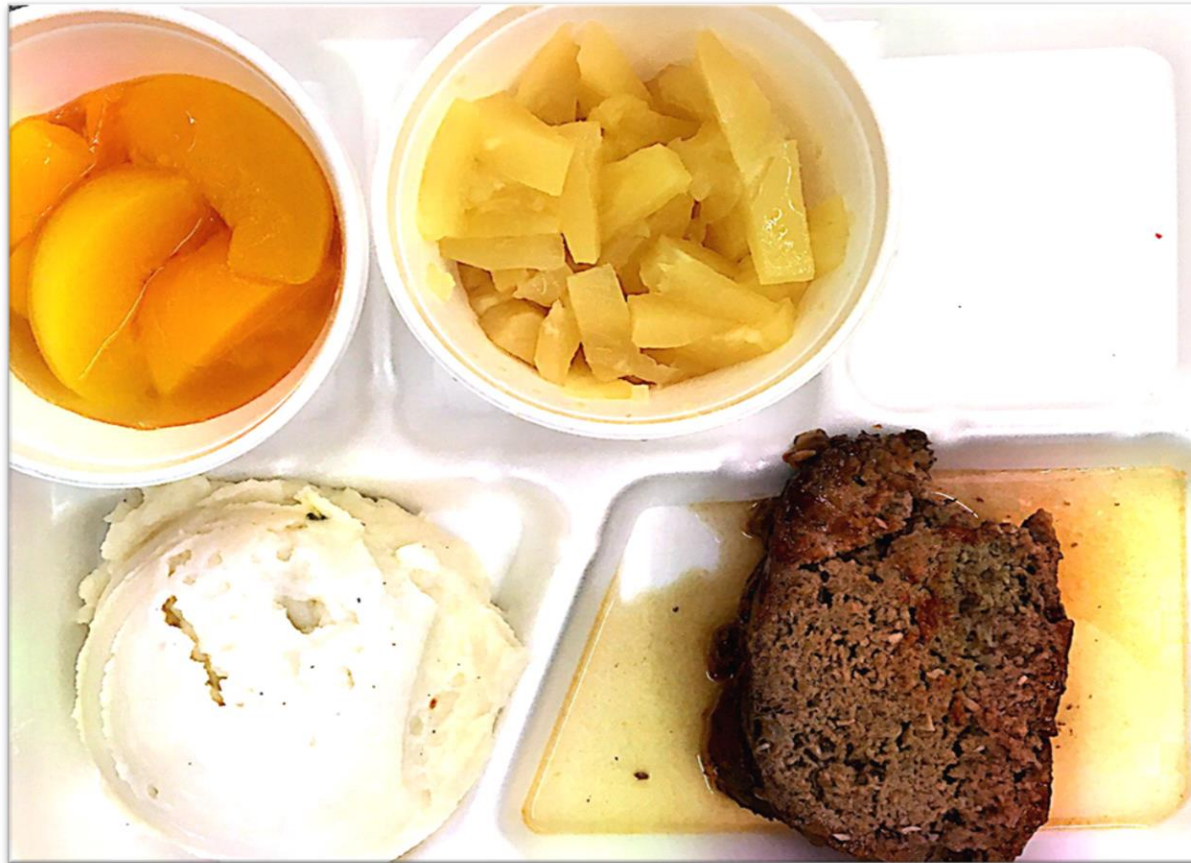
Is this a reimbursable meal ?	
Elementary	High School
YES	NO

	Components Served	
	Elementary	High School
Milk		
Meat	FULL	FULL
Grain		
Fruit	FULL	PARTIAL
Veg	PARTIAL	PARTIAL



Is this a reimbursable meal ?	
Elementary	High School
YES	YES

	Components Served	
	Elementary	High School
Milk	FULL	FULL
Meat	FULL	FULL
Grain		
Fruit	FULL	PARTIAL
Veg	PARTIAL	PARTIAL

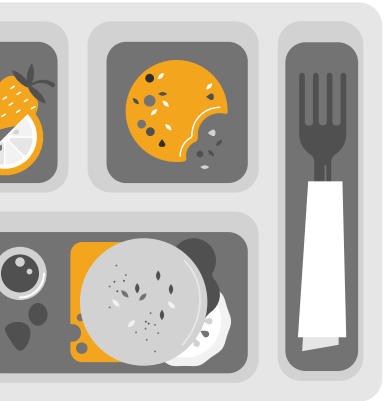


Is this a reimbursable meal ?	
Elementary	High School
YES	YES

	Components Served	
	Elementary	High School
Milk		
Meat	FULL	FULL
Grain		
Fruit	FULL	FULL
Veg	PARTIAL	PARTIAL

NEW MENU ALERT!

All Items Offered on the Menu for the Day



REQUIRED COMPONENTS	ITEMS OFFERED	COMPONENT CONTRIBUTION
Milk	White Milk	1 cup
	Chocolate Milk	1 cup
Meat	Hamburger Patty	2 oz eq.
Grain	Hamburger Bun	2 oz eq.
Fruit	Mandarin Oranges	½ cup
	Banana	½ cup
Veg	Corn	½ cup
	Broccoli	½ cup
	Green Beans	½ cup



Is this a reimbursable meal?	
Elementary	High School
YES	YES

	Components Served	
	Elementary	High School
Milk	FULL	FULL
Meat	FULL	FULL
Grain	FULL	FULL
Fruit	FULL	PARTIAL
Veg	PARTIAL	PARTIAL



Is this a reimbursable meal?	
Elementary	High School
NO	NO

	Components Served	
	Elementary	High School
Milk		
Meat		
Grain		
Fruit		
Veg	FULL	FULL



Is this a reimbursable meal ?	
Elementary	High School
NO	NO

	Components Served	
	Elementary	High School
Milk		
Meat		
Grain	FULL	FULL
Fruit		
Veg	FULL	FULL



Is this a reimbursable meal ?	
Elementary	High School
YES	YES

	Components Served	
	Elementary	High School
Milk		
Meat		
Grain	FULL	FULL
Fruit	FULL	PARTIAL
Veg	FULL	FULL



Is this a reimbursable meal ?	
Elementary	High School
YES	YES

Components Served		
	Elementary	High School
Milk		
Meat	FULL	FULL
Grain	FULL	FULL
Fruit	FULL	PARTIAL
Veg	FULL	FULL



Is this a reimbursable meal ?	
Elementary	High School
YES	YES

	Components Served	
	Elementary	High School
Milk		
Meat	FULL	FULL
Grain	FULL	FULL
Fruit	FULL	PARTIAL
Veg	PARTIAL	PARTIAL



Is this a reimbursable meal ?	
Elementary	High School
NO	NO

	Components Served	
	Elementary	High School
Milk	FULL	FULL
Meat	FULL	FULL
Grain	FULL	FULL
Fruit		
Veg		



Is this a reimbursable meal ?	
Elementary	High School
NO	NO

	Components Served	
	Elementary	High School
Milk		
Meat	FULL	FULL
Grain	FULL	FULL
Fruit		
Veg		



- Hamburger trimmings do not count toward the vegetable component
- While this may give you some veg, this is not a full serving of veg, **not even a half a cup veg as required to count toward OVS!**
- Considered an “Additional Food” rather than a veg component

Source: MRS 2021

MRS: 8290 – Condiments/Other (8000s)

TRIMMINGS

MEAL COMPONENT CONTRIBUTION:

None

NUMBER OF PORTIONS: 100 **SIZE OF PORTION:** 1 servings

RECIPE HACCP PROCESS: #1 - No cook



Is this a reimbursable meal ?	
Elementary	High School
YES*	YES*

	Components Served	
	Elementary	High School
Milk		
Meat	FULL	FULL
Grain	FULL	FULL
Fruit	FULL	PARTIAL
Veg	PARTIAL	PARTIAL

***SALT SHOULD NEVER BE SERVED FOR ANY REASON!!!**



Is this a reimbursable meal ?	
Elementary	High School
NO	NO

	Components Served	
	Elementary	High School
Milk		
Meat		
Grain		
Fruit	FULL	FULL
Veg	PARTIAL	PARTIAL



Is this a reimbursable meal ?	
Elementary	High School
YES	YES

	Components Served	
	Elementary	High School
Milk	FULL	FULL
Meat		
Grain		
Fruit	FULL	FULL
Veg	PARTIAL	PARTIAL



Is this a reimbursable meal ?	
Elementary	High School
NO	NO

	Components Served	
	Elementary	High School
Milk	FULL	FULL
Meat		
Grain		
Fruit	FULL	PARTIAL
Veg		



Is this a reimbursable meal ?	
Elementary	High School
NO	NO

	Components Served	
	Elementary	High School
Milk		
Meat		
Grain		
Fruit	FULL	FULL
Veg	FULL	FULL



Is this a reimbursable meal ?	
Elementary	High School
YES	YES

	Components Served	
	Elementary	High School
Milk		
Meat	FULL	FULL
Grain	FULL	FULL
Fruit	FULL	PARTIAL
Veg		



Is this a reimbursable meal ?	
Elementary	High School
YES	YES

	Components Served	
	Elementary	High School
Milk	FULL	FULL
Meat	FULL	FULL
Grain	FULL	FULL
Fruit	FULL	PARTIAL
Veg	PARTIAL	PARTIAL



Is this a reimbursable meal ?	
Elementary	High School
NO	NO

	Components Served	
	Elementary	High School
Milk		
Meat		
Grain		
Fruit	FULL	PARTIAL
Veg	FULL	FULL



Is this a reimbursable meal ?	
Elementary	High School
NO	NO

	Components Served	
	Elementary	High School
Milk		
Meat		
Grain		
Fruit	FULL	PARTIAL
Veg	FULL	FULL



Is this a reimbursable meal ?	
Elementary	High School
NO	NO

	Components Served	
	Elementary	High School
Milk		
Meat		
Grain		
Fruit	FULL	FULL
Veg	PARTIAL	PARTIAL

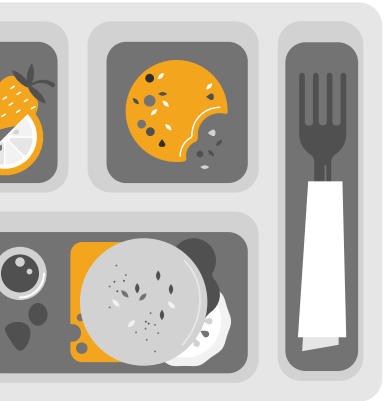


Is this a reimbursable meal ?	
Elementary	High School
NO	NO

	Components Served	
	Elementary	High School
Milk	FULL	FULL
Meat		
Grain		
Fruit		
Veg	FULL	FULL

NEW MENU ALERT!

All Items Offered on the Menu for the Day



REQUIRED COMPONENTS	ITEMS OFFERED	COMPONENT CONTRIBUTION
Milk	Variety of Milk	1 cup
Meat	Taco Meat Cheese	2 oz eq. 1 oz eq.
Grain	Taco Shell Tortilla Chips (<i>*about 9</i>)	1 oz eq. 1 oz eq.
Fruit	Mandarin Oranges Mixed Fruit	½ cup ½ cup
Veg	Corn Taco Trimmings Refried Beans	½ cup ¼ cup ½ cup



Is this a reimbursable meal ?	
Elementary	High School
NO	NO

	Components Served	
	Elementary	High School
Milk	FULL	FULL
Meat	FULL	FULL
Grain	FULL	PARTIAL
Fruit		
Veg	1/4 cup!	1/4 cup!



- If you look at the recipe, you see that the trimmings are not enough to give you the half cup required by the OVS rules

Source: MRS 2021

MEAL COMPONENT CONTRIBUTION:

3 oz. eq. meat/meat alternate, 1 oz. eq. whole grain, 1/8 cup of other vegetable, 1/8 cup of red/orange vegetable

NUMBER OF PORTIONS: 100 **SIZE OF PORTION:** 1 taco

RECIPE HACCP PROCESS: #2 - Same day service

MRS: 1150 – Beef (1000s)

CRISPY BEEF TACO



MEAT/MEAT ALTERNATE : WHOLE GRAINS : VEGETABLES (RED/ORANGE)
: VEGETABLES (OTHER)



Is this a reimbursable meal ?	
Elementary	High School
YES	NO

	Components Served	
	Elementary	High School
Milk		
Meat	FULL	FULL
Grain	FULL	PARTIAL
Fruit		
Veg	PARTIAL	PARTIAL



- The taco shell only gives you 1 oz eq of Grain
- This is a full component for the Elementary level, but not the High School level.
- High School students may have to pick up an additional serving of chips to get the full grain component

Source: MRS 2021

MEAL COMPONENT CONTRIBUTION:

3 oz. eq. meat/meat alternate, 1 oz. eq. whole grain, 1/8 cup of other vegetable, 1/8 cup of red/orange vegetable

NUMBER OF PORTIONS: 100 **SIZE OF PORTION:** 1 taco

RECIPE HACCP PROCESS: #2 - Same day service

MRS: 1150 – Beef (1000s)

CRISPY BEEF TACO



MEAT/MEAT ALTERNATE : WHOLE GRAINS : VEGETABLES (RED/ORANGE)

: VEGETABLES (OTHER)



Is this a reimbursable meal ?	
Elementary	High School
YES	YES

	Components Served	
	Elementary	High School
Milk	FULL	FULL
Meat	FULL	FULL
Grain	FULL	PARTIAL
Fruit		
Veg	FULL	PARTIAL



Is this a reimbursable meal ?	
Elementary	High School
YES	NO

	Components Served	
	Elementary	High School
Milk		
Meat	FULL	FULL
Grain	FULL	PARTIAL
Fruit		
Veg	FULL	PARTIAL



Is this a reimbursable meal ?	
Elementary	High School
YES	NO

	Components Served	
	Elementary	High School
Milk	FULL	FULL
Meat		
Grain		
Fruit	FULL	PARTIAL
Veg	PARTIAL	PARTIAL



Is this a reimbursable meal ?	
Elementary	High School
YES	YES

	Components Served	
	Elementary	High School
Milk	FULL	FULL
Meat		
Grain		
Fruit	FULL	FULL
Veg	PARTIAL	PARTIAL



Is this a reimbursable meal ?	
Elementary	High School
YES	YES

	Components Served	
	Elementary	High School
Milk	FULL	FULL
Meat		
Grain		
Fruit	FULL	PARTIAL
Veg	FULL	FULL

OVS at Breakfast

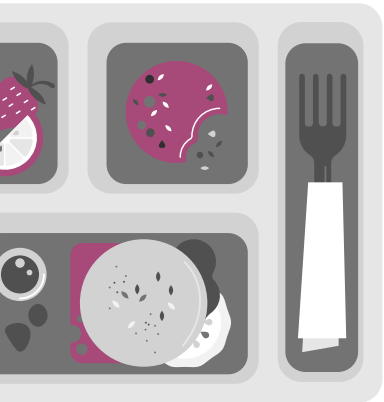
SBP

OVS Rules at Breakfast

7 CFR 220.8(e) and SP 41-2015

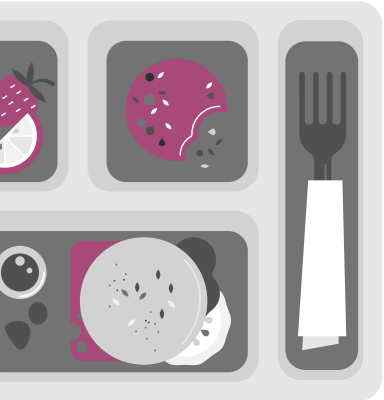
- The site must offer at least 4 food items (*not to be confused with components, remember there are 3 required components at breakfast*)
- Students must be allowed to decline 1 of the 4 items that are offered at breakfast
- Students must select at least a half cup of fruit (or veg)

At minimum, the student must select 3 items, 1 of which must be a fruit (veg)!



Component Versus Item

- **Component:** one of three food groups (Grains, Fruit, Milk) that comprise a reimbursable breakfast.
- **Item:** a specific food offered within the three food components.



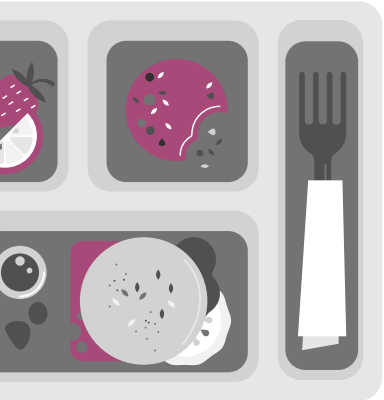
In this menu example, we see three components and four items represented. Two of the items (muffin and toast) come from the same component (grain).

Menu: Muffin, Toast, Apple, Milk

Remember, at lunch we deal with components. At Breakfast we deal with items!

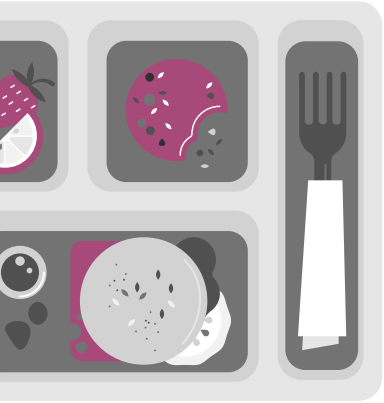
What about Meat at Breakfast?

- M/MA can be offered once a full serving of true grain has been offered on the menu.
- The student does not have to pick up the true grain before they pick up the M/MA. The true grain just has to be on the menu before the M/MA can count.
- The Student can pick up the M/MA and have it count toward the reimbursable meal item total as long as the menu planner has specified that the M/MA will count toward the Grain.

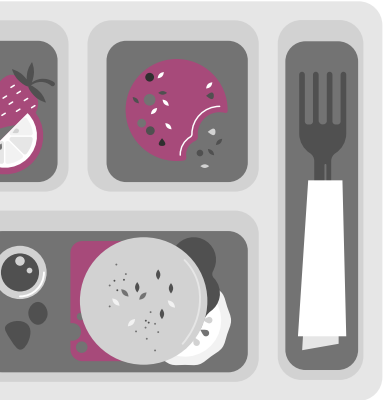


Menu Planner Discretion & Counting Items

- The Menu planner decides how to count items.
- Combination foods can count as multiple items.
- For example, a muffin with 2 oz eq. of grain can count as two items, or a sausage biscuit can count as two items.
- The menu planner must communicate this information to the Cashier!



Knowledge of Meal Pattern is essential to OVS implementation



SBP Meal Pattern – Daily Minimum Requirements			
	K-8	6-8	9-12
Grain*	1 oz eq.	1 oz eq.	1 oz eq.
Fruit/Veg	1 cup	1 cup	1 cup
Milk	1 cup	1 cup	1 cup

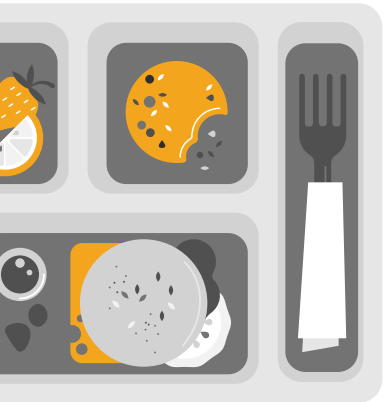
***NOTE:** Meats are optional at breakfast. If served, they can count toward the grain component at the discretion of the menu planner. However, you must offer the full component of a true grain.

Let's Practice!

OVS at Breakfast (SBP)

MENU OVERVIEW

All Items Offered on the Menu for the Day



REQUIRED COMPONENTS	ITEMS OFFERED <small>*must serve at least 4</small>	CONTRIBUTION	COUNTS AS HOW MANY ITEMS <small>*menu planner discretion</small>
Milk	Variety of Milk	1 cup	1
Grain <small>*includes optional meats</small>	Biscuit Sausage Patty Chicken Patty Eggs	2 oz eq G 1 oz eq. M 1 oz eq. M 1.5 oz eq M	1 (*menu planner could decide to count this as 2!) 1 1 1
Fruit / Veg	Apple Orange Juice Hashbrown	½ cup ½ cup ½ cup ½ cup (*2 patties)	1 1 1 1

Additional Foods: Bacon



Is this a reimbursable meal ?

YES

	Items Served
Milk	1
Grain	3
Fruit/Veg	2



Is this a reimbursable meal ?

YES

	Items Served
Milk	
Grain	2
Fruit/Veg	1



Is this a reimbursable meal ?

NO

	Items Served
Milk	1
Grain	
Fruit/Veg	1



- Bacon does not count toward the meat component
- Considered an “Additional Food” rather than a meat component
- Cannot count as an item at breakfast

Source: MRS 2021

MRS: 8110 – Condiments/Other (8000s)

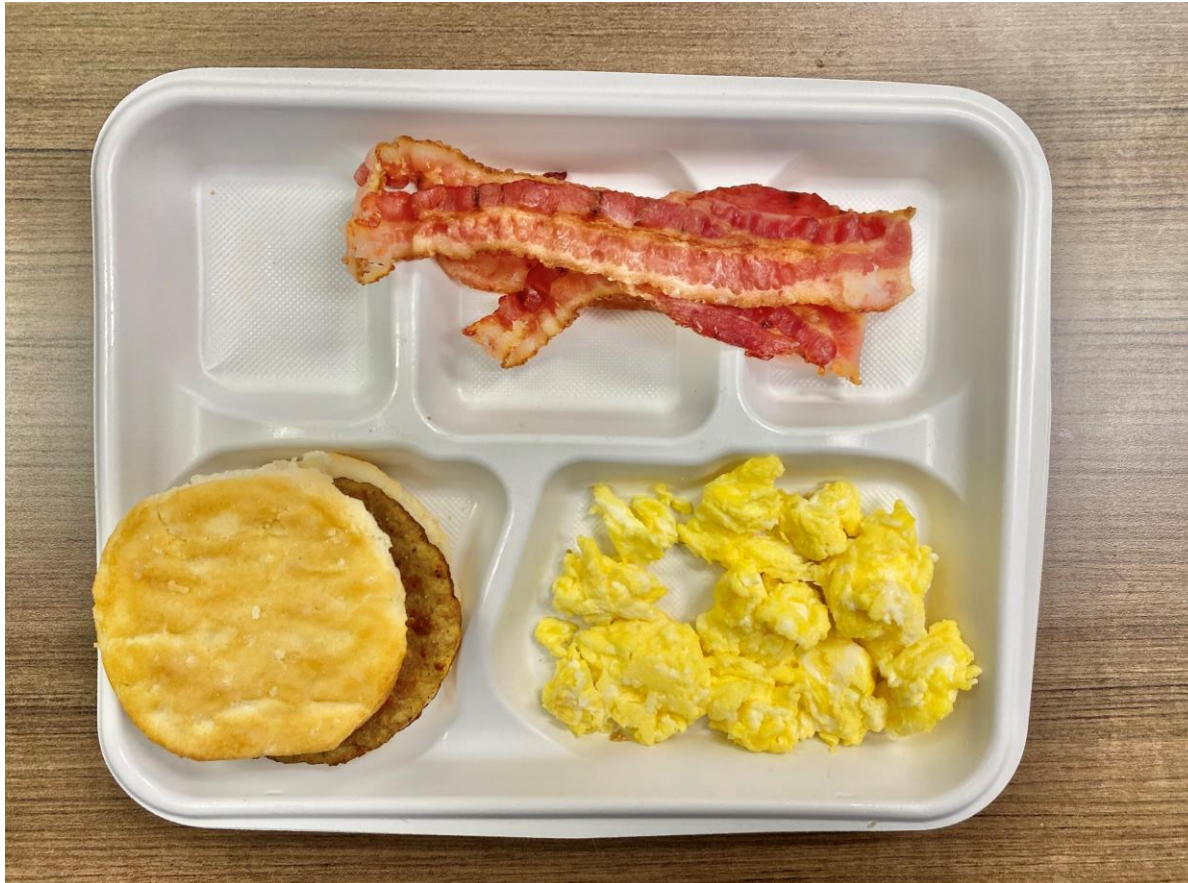
BACON STRIPS

MEAL COMPONENT CONTRIBUTION:

None

NUMBER OF PORTIONS: 100 **SIZE OF PORTION:** 2 slices

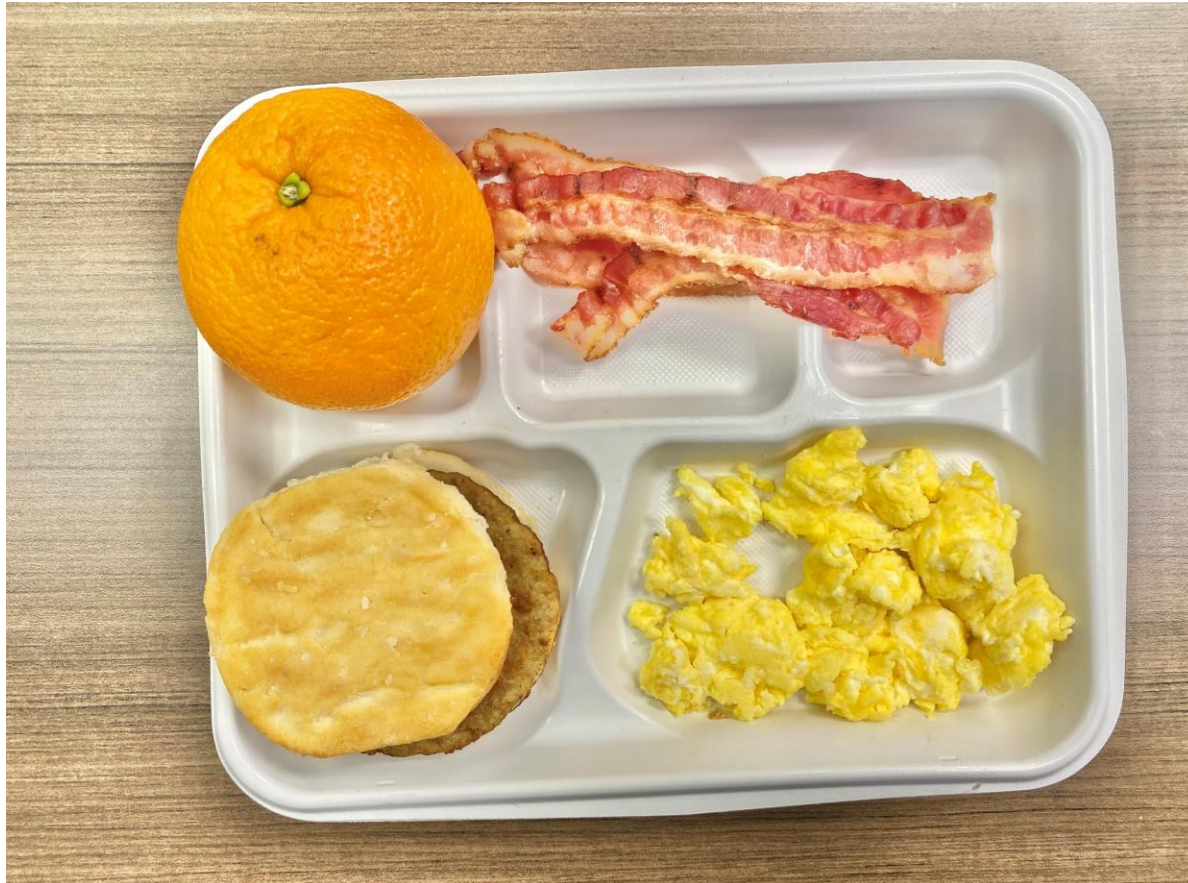
RECIPE HACCP PROCESS: #2 - Same day service



Is this a reimbursable meal ?

NO

	Items Served
Milk	
Grain	3
Fruit/Veg	



Is this a reimbursable meal ?

YES

	Items Served
Milk	
Grain	3
Fruit/Veg	1



Is this a reimbursable meal ?

NO

	Items Served
Milk	
Grain	1
Fruit/Veg	



Is this a reimbursable meal ?

YES

	Items Served
Milk	
Grain	2
Fruit/Veg	3



Is this a reimbursable meal ?

YES

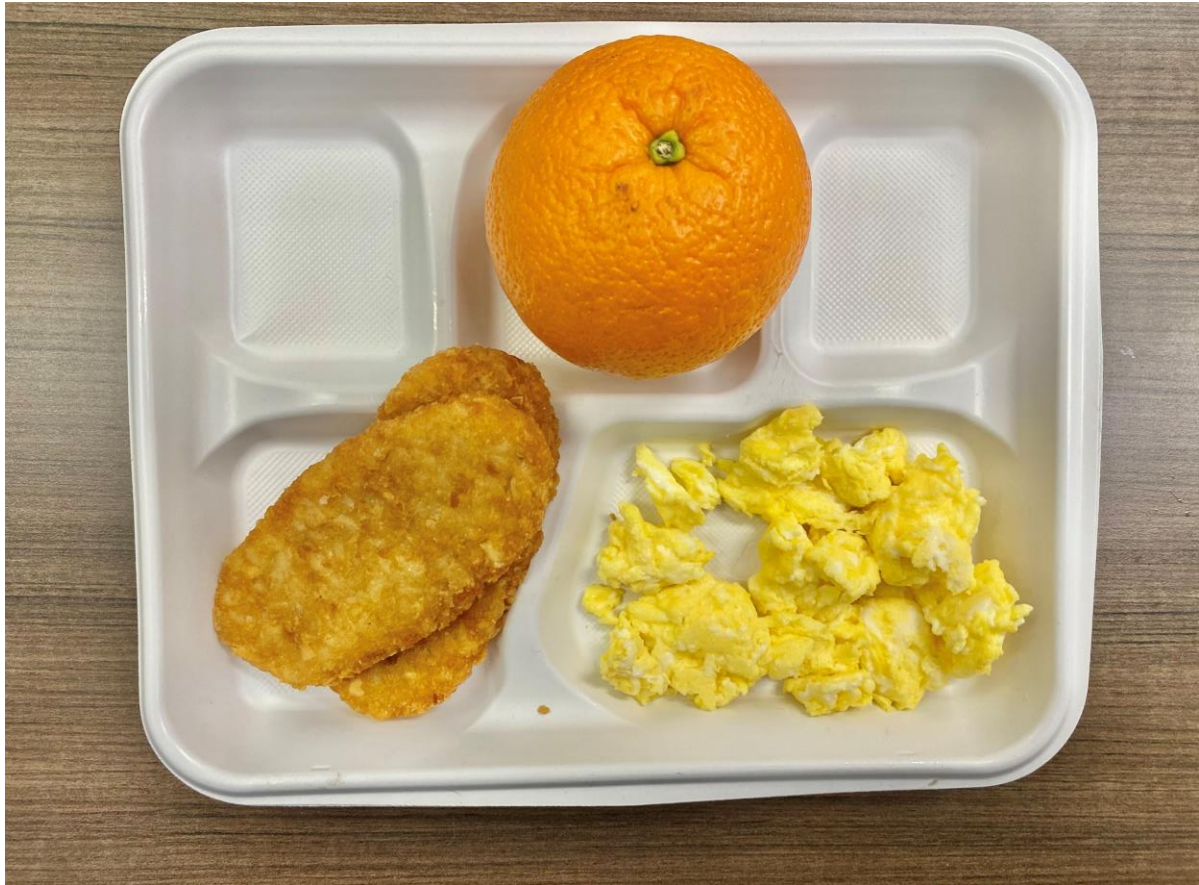
	Items Served
Milk	1
Grain	2
Fruit/Veg	1



Is this a reimbursable meal ?

NO

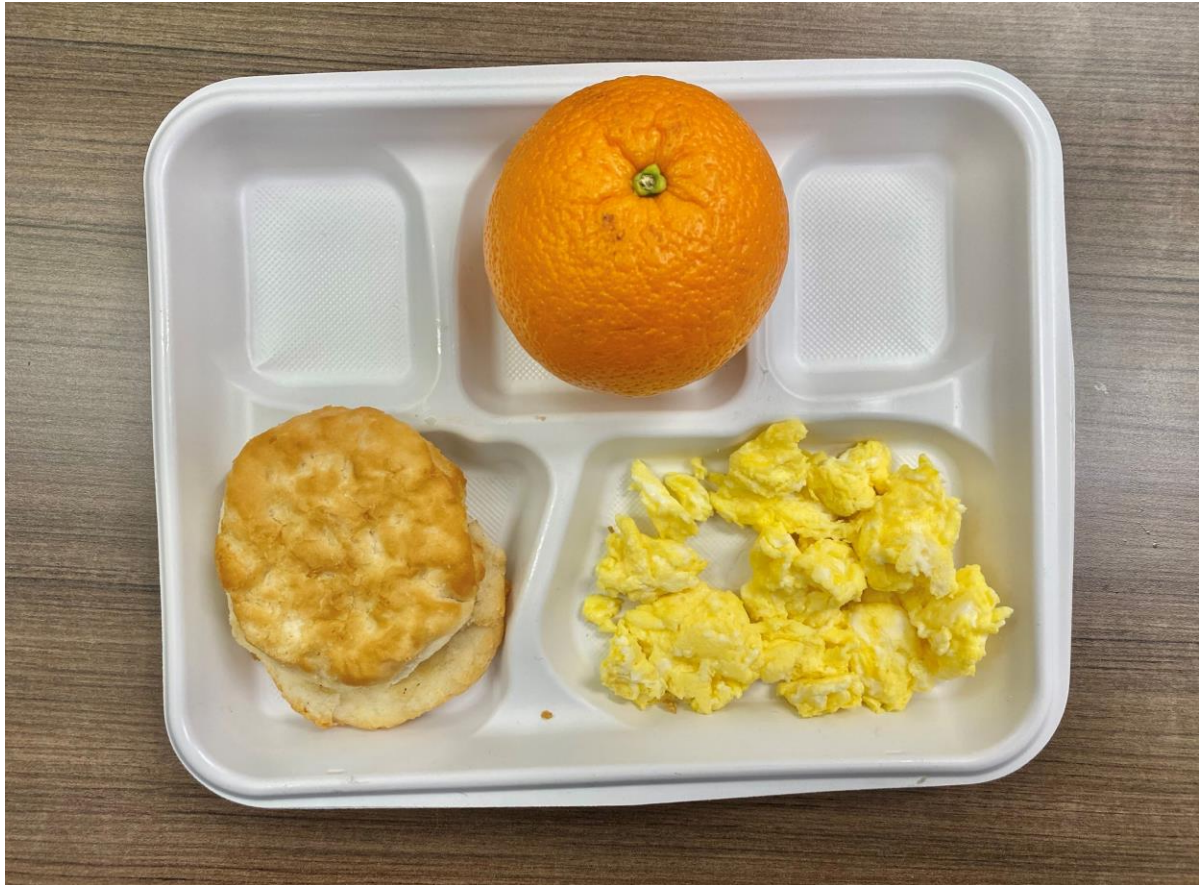
	Items Served
Milk	
Grain	4
Fruit/Veg	



Is this a reimbursable meal ?

YES

	Items Served
Milk	
Grain	1
Fruit/Veg	2



Is this a reimbursable meal ?

YES

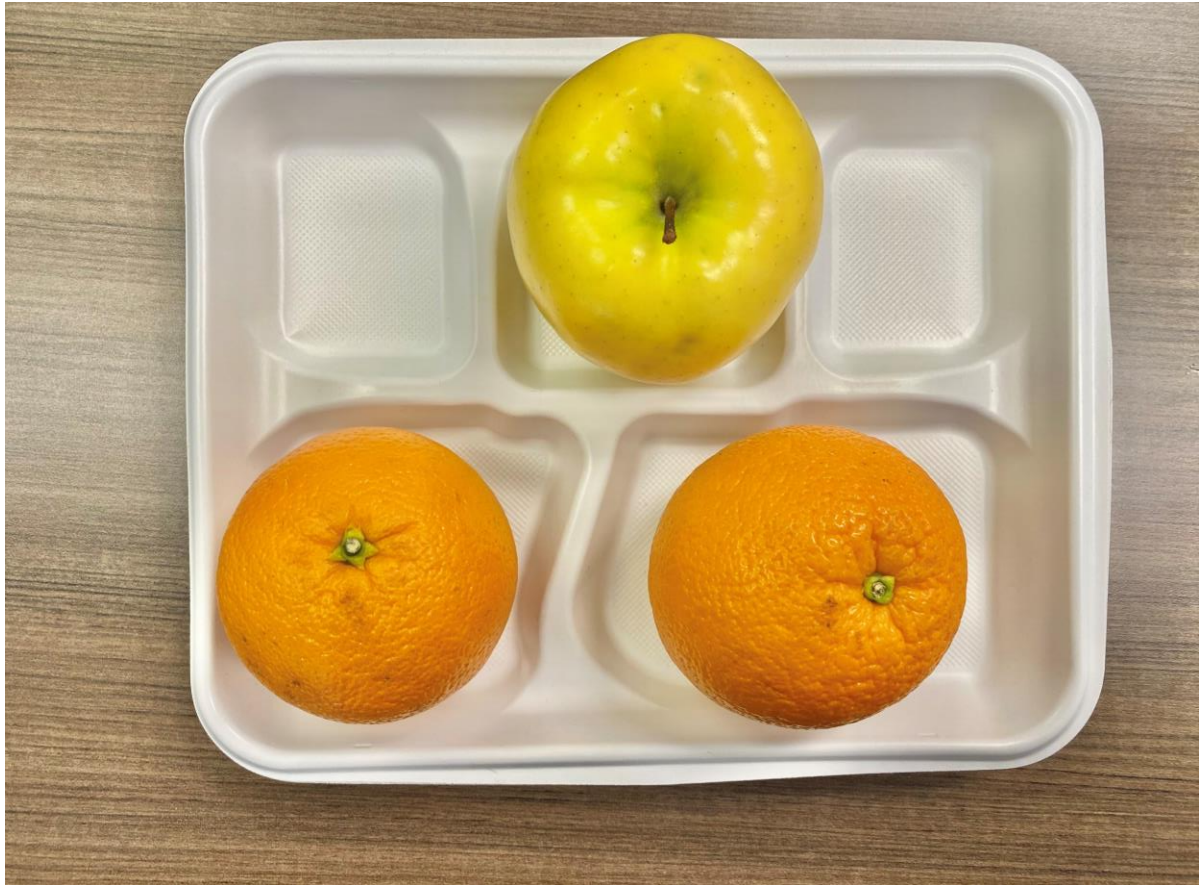
	Items Served
Milk	
Grain	2
Fruit/Veg	1



Is this a reimbursable meal ?

YES

	Items Served
Milk	1
Grain	1
Fruit/Veg	1



Is this a reimbursable meal ?

YES

	Items Served
Milk	
Grain	
Fruit/Veg	3



Is this a reimbursable meal ?

YES

	Items Served
Milk	
Grain	
Fruit/Veg	3



Is this a reimbursable meal ?

YES

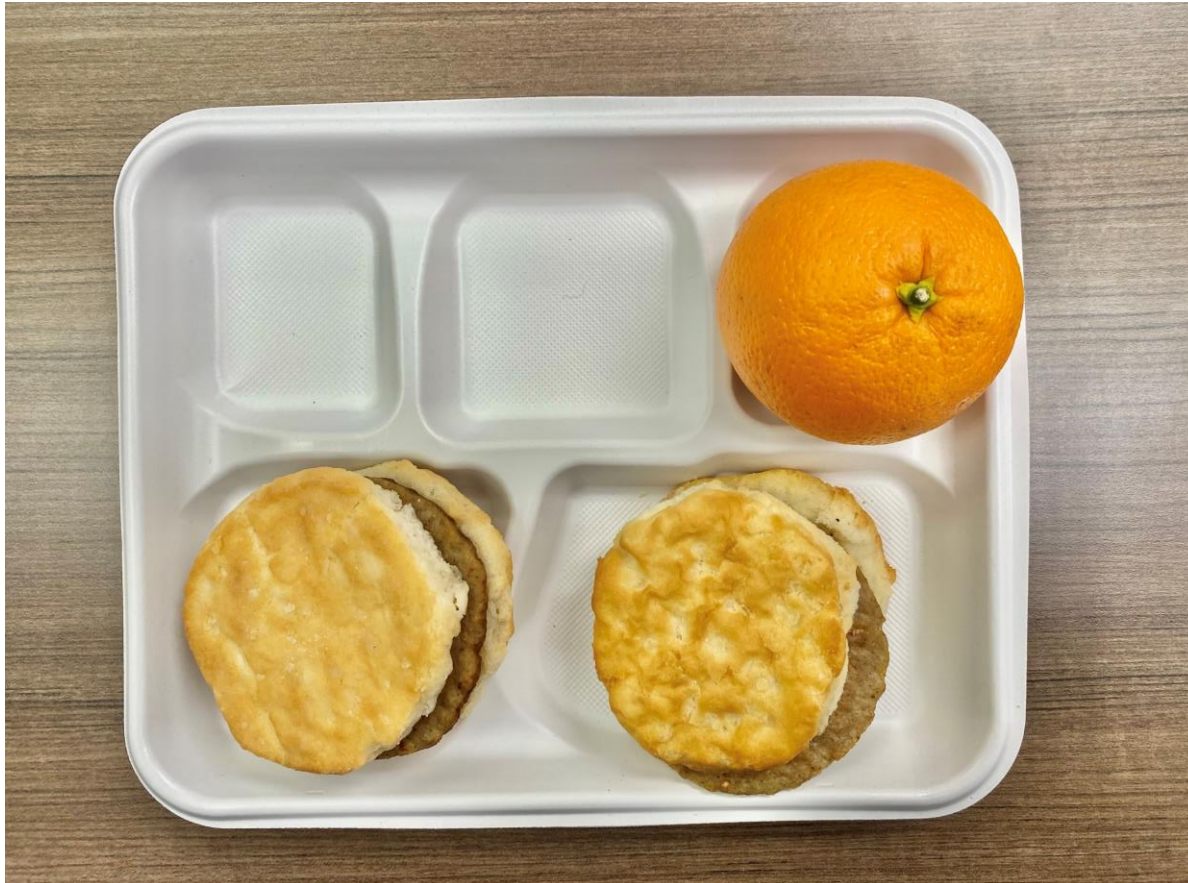
	Items Served
Milk	
Grain	1
Fruit/Veg	2



Is this a reimbursable meal ?

YES

	Items Served
Milk	
Grain	1
Fruit/Veg	2



Is this a reimbursable meal ?

YES

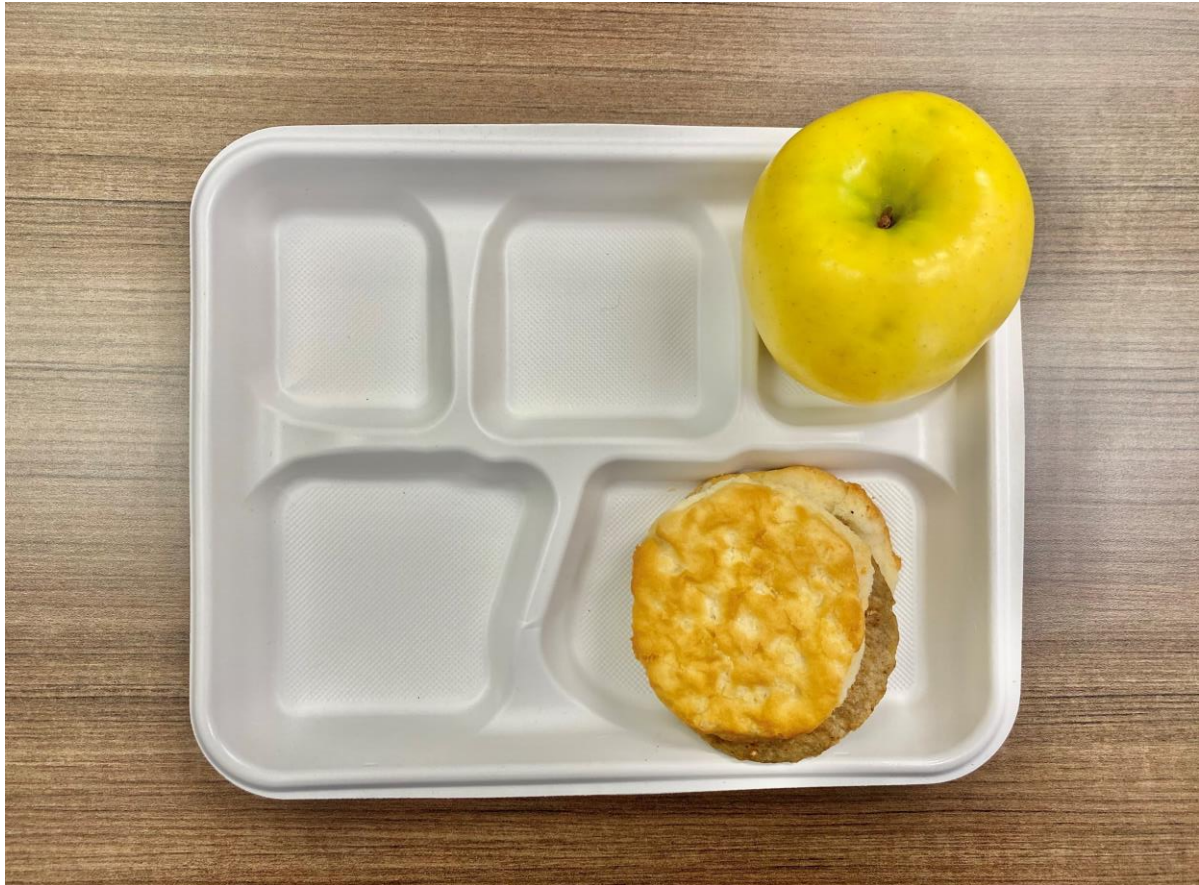
	Items Served
Milk	
Grain	4
Fruit/Veg	1



Is this a reimbursable meal ?

NO

	Items Served
Milk	
Grain	2
Fruit/Veg	



Is this a reimbursable meal ?

YES

	Items Served
Milk	
Grain	2
Fruit/Veg	1



Is this a reimbursable meal ?

NO

	Items Served
Milk	1
Grain	2
Fruit/Veg	



Is this a reimbursable meal ?

YES

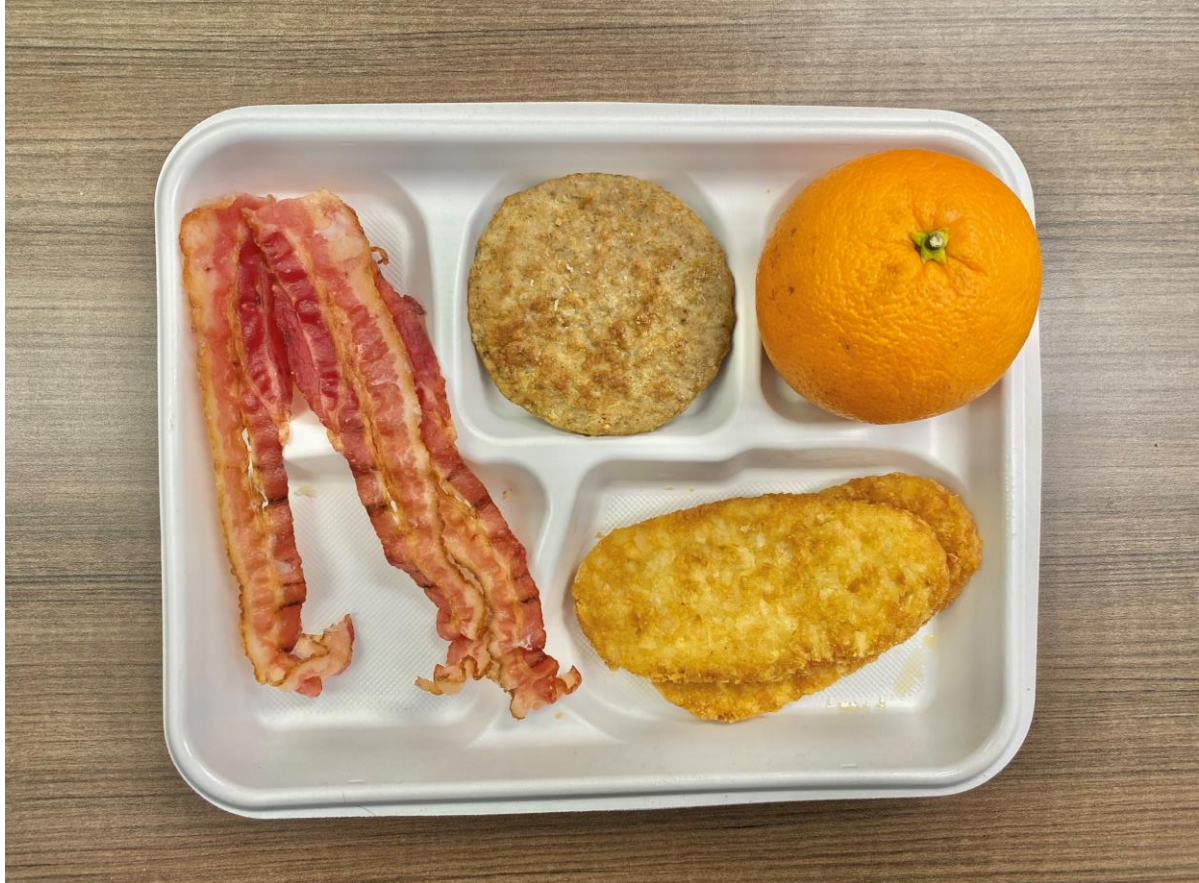
	Items Served
Milk	
Grain	2
Fruit/Veg	1



Is this a reimbursable meal ?

NO

	Items Served
Milk	
Grain	1
Fruit/Veg	1



Is this a reimbursable meal ?

YES

	Items Served
Milk	
Grain	1
Fruit/Veg	2



Is this a reimbursable meal ?

NO

	Items Served
Milk	1
Grain	2
Fruit/Veg	



Is this a reimbursable meal ?

YES

	Items Served
Milk	
Grain	4
Fruit/Veg	1



Is this a reimbursable meal ?

YES*

	Items Served
Milk	1
Grain	2
Fruit/Veg	1

***SALT SHOULD NEVER BE SERVED FOR ANY REASON!!!**



Is this a reimbursable meal ?

NO

	Items Served
Milk	
Grain	1
Fruit/Veg	1



Is this a reimbursable meal ?

NO

	Items Served
Milk	
Grain	1
Fruit/Veg	1



Is this a reimbursable meal ?

YES

	Items Served
Milk	1
Grain	2
Fruit/Veg	1

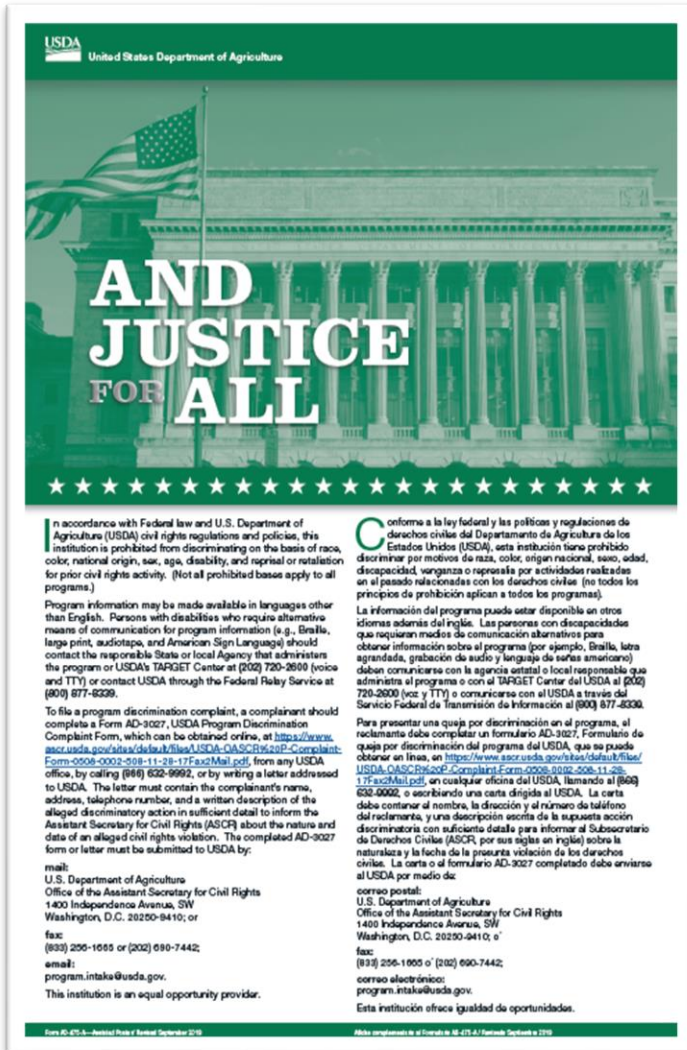
Questions



This institution is an equal opportunity provider.

Full Non-Discrimination Statement link:

<https://www.fns.usda.gov/civil-rights/usda-nondiscrimination-statement-other-fns-programs>



The poster features the USDA logo at the top left, with the text "United States Department of Agriculture" below it. The background is a green-tinted image of a classical building with columns and an American flag. The title "AND JUSTICE FOR ALL" is prominently displayed in white, bold, sans-serif font. Below the title is a row of white stars. The main body of the poster contains two columns of text, one in English and one in Spanish, detailing the non-discrimination policy and providing contact information for filing a complaint. At the bottom, there are two small lines of text: "Form 607-5 - Revised March 2014" and "Este documento es el Formulario 607-5 (A) - Revisado Octubre 2014".

AND JUSTICE FOR ALL

In accordance with Federal law and U.S. Department of Agriculture (USDA) civil rights regulations and policies, this institution is prohibited from discriminating on the basis of race, color, national origin, sex, age, disability, and reprisal or retaliation for prior civil rights activity. (Not all prohibited bases apply to all programs.)

Program information may be made available in languages other than English. Persons with disabilities who require alternative means of communication for program information (e.g., Braille, large print, audiotape, and American Sign Language) should contact the responsible State or local Agency that administers the program or USDA's TARGET Center at (202) 720-2600 (voice and TTY) or contact USDA through the Federal Relay Service at (800) 877-8339.

To file a program discrimination complaint, a complainant should complete a Form AD-3027, USDA Program Discrimination Complaint Form, which can be obtained online, at <https://www.asec.usda.gov/sites/default/files/USDA-CASCR%20P-Complaint-Form-0508-0002-008-11-26-17FacMail.pdf>, from any USDA office, by calling (800) 638-9992, or by writing a letter addressed to USDA. The letter must contain the complainant's name, address, telephone number, and a written description of the alleged discriminatory action in sufficient detail to inform the Assistant Secretary for Civil Rights (ASCR) about the nature and date of an alleged civil rights violation. The completed AD-3027 form or letter must be submitted to USDA by:

mail:
U.S. Department of Agriculture
Office of the Assistant Secretary for Civil Rights
1400 Independence Avenue, SW
Washington, D.C. 20250-9410; or

fax:
(800) 256-1005 or (202) 690-7442;

email:
program.intake@usda.gov.

This institution is an equal opportunity provider.

Conforme a la ley federal y las políticas y regulaciones de derechos civiles del Departamento de Agricultura de los Estados Unidos (USDA), esta institución tiene prohibido discriminar por motivos de raza, color, origen nacional, sexo, edad, discapacidad, venganza o represalia por actividades realizadas en el pasado relacionadas con los derechos civiles (no todos los principios de prohibición aplican a todos los programas).

La información del programa puede estar disponible en otros idiomas además del inglés. Las personas con discapacidades que requieran medios de comunicación alternativos para obtener información sobre el programa (por ejemplo, Braille, letra grande, grabación de audio y lenguaje de señas americano) deben comunicarse con la agencia estatal o local responsable que administra el programa o con el TARGET Center del USDA al (202) 720-2600 (voz y TTY) o comunicarse con el USDA a través del Servicio Federal de Transmisión de Información al (800) 877-8339.

Para presentar una queja por discriminación en el programa, el reclamante debe completar un formulario AD-3027, Formulario de queja por discriminación del programa del USDA, que se puede obtener en línea, en <https://www.asec.usda.gov/sites/default/files/USDA-CASCR%20P-Complaint-Form-0508-0002-008-11-26-17FacMail.pdf>, en cualquier oficina del USDA, llamando al (800) 638-9992, o escribiendo una carta dirigida al USDA. La carta debe contener el nombre, la dirección y el número de teléfono del reclamante, y una descripción escrita de la supuesta acción discriminatoria con suficiente detalle para informar al Subsecretario de Derechos Civiles (ASCR, por sus siglas en inglés) sobre la naturaleza y la fecha de la presunta violación de los derechos civiles. La carta o el formulario AD-3027 completado debe enviarse al USDA por medio de:

correo postal:
U.S. Department of Agriculture
Office of the Assistant Secretary for Civil Rights
1400 Independence Avenue, SW
Washington, D.C. 20250-9410; o

fax:
(800) 256-1005 o (202) 690-7442;

correo electrónico:
program.intake@usda.gov.

Esta institución ofrece igualdad de oportunidades.

Form 607-5 - Revised March 2014

Este documento es el Formulario 607-5 (A) - Revisado Octubre 2014



Office of Child Nutrition

mdek12.org



MISSISSIPPI
DEPARTMENT OF
EDUCATION



Is this a reimbursable meal ?	
Elementary	High School
YES	NO

	Components Served			
	Elementary		High School	
Milk	FULL	PARTIAL	FULL	PARTIAL
Meat	FULL	PARTIAL	FULL	PARTIAL
Grain	FULL	PARTIAL	FULL	PARTIAL
Fruit	FULL	PARTIAL	FULL	PARTIAL
Veg	FULL	PARTIAL	FULL	PARTIAL

Is this a reimbursable meal ?
YES NO

	Items Served
Milk	
Grain	
Fruit/Veg	