

OFFICE OF CHIEF ACADEMIC OFFICER
Summary of State Board of Education Agenda Items
Consent Agenda
February 15, 2018

OFFICE OF SCHOOL DISTRICT CONSOLIDATION

H. Approve the new boundaries of the Lamar County School District

According to Miss. Code Ann. § 37-7-105 "**after all preclearance has been received** the State Board of Education shall declare the new boundaries of the consolidated school district and all action shall proceed as outlined under law using the new boundaries." Included herein (Exhibit 1) is the legal description of the new Lamar County School District effective July 1, 2018.

Recommendation: Approval

Back-up material attached

Lumberton Public School District
Superintendent Dr. Linda L. Smith
107 Tenth Avenue
P.O. Box 551
Lumberton, MS 39455
Telephone: 601-796-2441
Facsimile: 601-796-2051

Lamar County School District
Superintendent Tess R. Smith
424 Martin Luther King Drive
P.O. Box 609
Purvis, MS 39475
Telephone: 601-794-1030
Facsimile: 601-794-1012

January 19, 2018

VIA CM/RRR: 7016 3560 0000 6801 2654

Dr. Carey Wright
State Superintendent of Education
Mississippi Department of Education
P.O. Box 771
Jackson, MS 39205-0771

Dear Dr. Wright:

As you know the school boards of the Lumberton Public School District and the Lamar County School District, pursuant to the authority granted in Mississippi Code Annotated §37-7-103 (1972), have agreed to consolidate the Lumberton Public School District into the Lamar County School District effective July 1, 2018. The procedures to perfect the consolidation are set forth in Mississippi Code Annotated §37-7-105 (1972), with the following actions being taken to date:

- April 10, 2017 – the school boards of the Lamar County School District and the Lumberton Public School District each approved orders adopting a *Resolution to Consolidate the Lumberton Public School District in the Lamar County School District*.
- April 13, 20, & 27, 2017 – the orders of the school boards were published in a newspaper having a general circulation in the districts once a week for three consecutive weeks advising that the orders would become final thirty days after the first publication.
- May 14, 2017 – thirty days from date of first publication of orders in the newspaper elapsed with no petition protesting the orders being filed with either school district.
- June 16, 2017 – the orders and resolution to consolidate were approved by the State Board of Education
- October 4, 2017 – the Lamar County School District and the Lumberton Public School District received notice from the U.S. Department of Justice that

preclearance determinations under Section 5 of the Voting Rights Act was rendered unconstitutional by the U.S. Supreme Court in *Shelby County v. Holder*, 133 S. Ct. 2612 (2013) and that preclearance determinations are no longer being made by the Attorney General.

- November 13, 2017 – the school boards of the Lamar County School District and Lumberton Public School District each approved orders adopting a *Resolution Establishing New Board Member Districts of the Lamar County School District* effective July 1, 2018.

Documentation for all the above referenced actions is attached to the *Resolution Establishing New Board Member Districts of the Lamar County School District*, and orders approving the same, copies enclosed.

According to Mississippi Code Annotated §37-7-105 (1972) "after all preclearance has been received, the State Board of Education shall declare the new boundaries of the consolidated school district and all action shall proceed as outlined under law using the new boundaries." We are writing, each on behalf of our respective school districts, to respectfully request the State Board of Education take action at its next meeting to formally declare the new boundaries of the Lamar County School District pursuant to Mississippi Code Annotated §37-7-105 (1972). Enclosed herewith is a proposed *Order Declaring New Boundaries of the Lamar County School District* for the State Board's consideration.

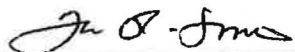
We thank you for your attention to this request and if you have any questions please feel free to contact us.

Sincerely,

Lumberton Public School District

Lamar County School District

By: 
Dr. Linda L. Smith, Superintendent

By: 
Tess R. Smith, Superintendent

BEFORE THE MISSISSIPPI BOARD OF EDUCATION

ORDER DECLARING NEW BOUNDARIES
OF THE LAMAR COUNTY SCHOOL DISTRICT

THIS DAY there came to be heard at a lawful meeting of the Mississippi Board of Education, the matter of the *New Boundaries of the Lamar County School District* and the board upon proper motion, proper second, discussion, and favorable vote thereon, finds and orders as follows, to-wit:

WHEREAS the Lumberton Public School District and Lamar County School District, pursuant to the authority granted in Mississippi Code Annotated §37-7-103 (1972), have agreed to voluntarily consolidate the Lumberton Public School District into the Lamar County School District effective July 1, 2018; and

WHEREAS the procedures for voluntarily consolidation of a school district set forth in Mississippi Code Annotated §37-7-105 (1972) have been complied with by the Lumberton Public School District and Lamar County School District; and

WHEREAS the Lamar County School District and Lumberton Public School District have requested the State Board of Education to declare the new boundaries of the Lamar County School District as shown in Exhibit "1", attached and incorporated herein, effective July 1, 2018.

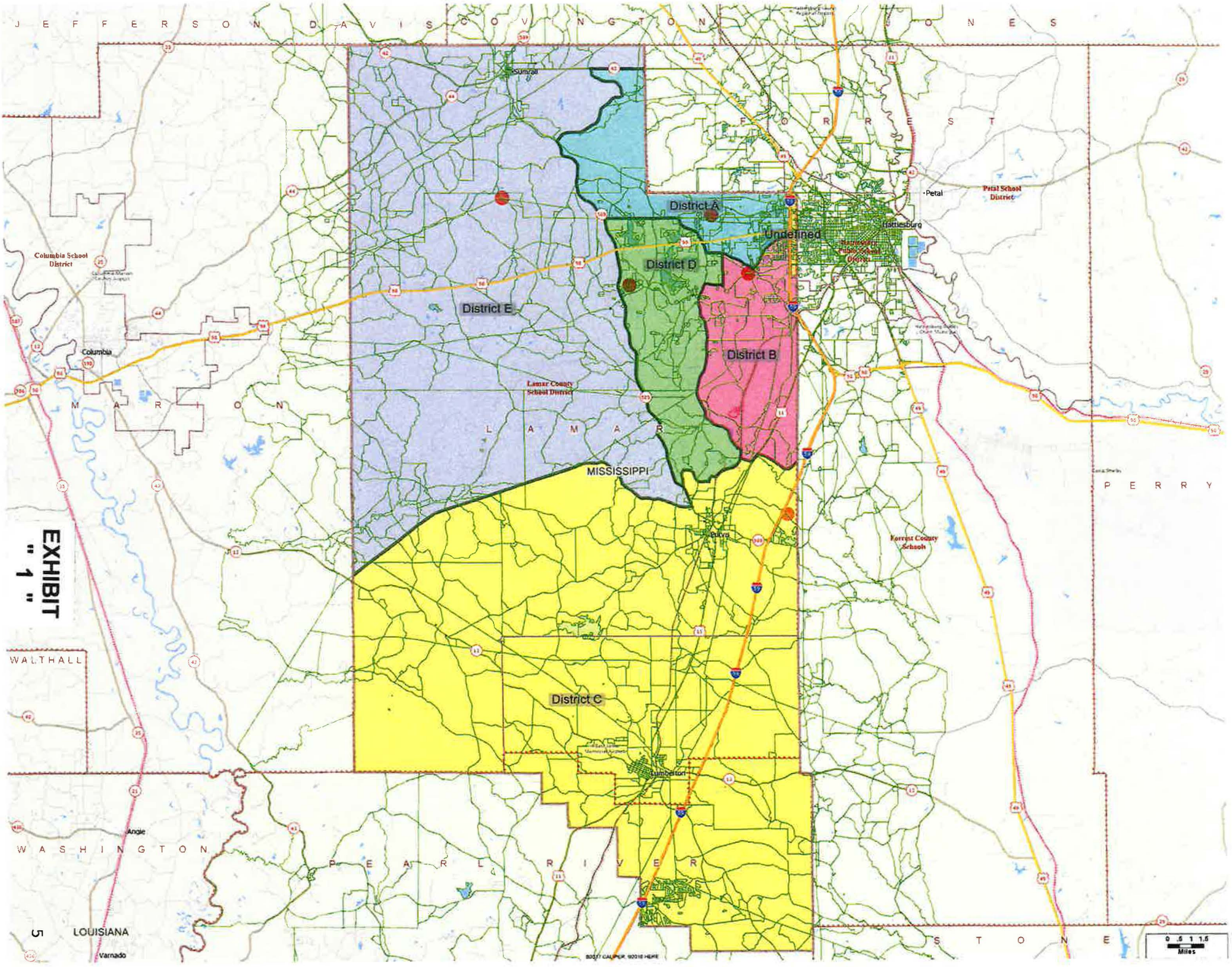
NOW THEREFORE, BE IT ORDERED that the new boundaries of the Lamar County School District as shown in Exhibit "1", are hereby declared as the new boundaries of the Lamar County School District effective July 1, 2018, and that Lamar County School District shall proceed with all action as outlined under law using the new boundaries.

SO ORDERED, on this the ____ day of _____, A.D., 2018.

MISSISSIPPI BOARD OF EDUCATION

BY: _____
Rosemary G. Aultman, Chair

ATTEST: _____
Carey M. Wright, Executive Secretary



LEGAL DESCRIPTION OF THE LAMAR COUNTY SCHOOL DISTRICT BOARD MEMBER DISTRICTS

DISTRICT A

Starting at the intersection of State Highway 42 and the Lamar County School District eastern boundary, continuing westward on State Highway 42 for 2.19 miles until the Intersection of Simms Road, then southward as Simms Road turns eastward, continuing on Simms Road for 2.13 miles until the intersection of Epley and Simms Road, head westward on Epley Road for 3.69 miles. At the intersection of Epley Road and Oren Jones Road, continue on for 1.21 miles until the intersection of Epley Road and State Highway 589. Continue southeast on State Highway 589 for 4.21 miles until the intersection of State Highway 589 and Raymond Rawls Road, continuing eastward for 3.02 miles in a straight line until reaching the intersection of Hatten Road. At Hatten Road, head southward for 0.23 miles until the intersection of King Road, then continuing on King Road southeasterly through the intersection of State Highway 98, continuing onto Old State Highway 11, as the road changes names. Continue on old State Highway 11 for 0.47 miles until reaching the intersection of Lincoln Road Extension. Heading eastward on Lincoln Road Extension for 0.67 miles until the intersection of Hegwood Road, continuing on Lincoln Road Extension for an additional 1.47 miles until reaching the intersection of Lincoln Road and Oak Grove Road. Following Oak Grove Road eastward until reaching I-59, where the road ends. Using I-59 as the boundary, head northward for 1.67 miles, then westward for 5.86 miles along the Lamar County School District's northern boundary. Continuing north on the Lamar County School District boundary for 5.03 miles, then heading westward at Highway 42 Intersection, until reaching the starting point.

DISTRICT B

Starting at the Intersection of Hegwood Road and Lincoln Road Extension, heading eastward for an additional 1.47 miles until reaching the intersection of Lincoln Road and Oak Grove Road, Following Oak Grove Road eastward until reaching I-59. Using I-59 as the boundary, head southward for 1.79 miles, then eastward to 0.28 miles until reaching the Lamar County School District's eastern boundary. Heading southward from the Lamar County School District's eastern boundary until reaching Harold Tucker Road, approximately 7.57 miles to the south. Following Harold Tucker Road for approximately 1.8 miles westward until reaching the intersection of US Highway 11. At the intersection of Harold Tucker Road and US Highway 11, head southward for 0.45 miles until the intersection of Amerada Hess Dr. Continuing westward on Hess Drive for approximately 0.48 miles, until the intersection of the Norfolk Southern railroad tracks. Follow the NS tracks for approximately 0.32 miles northward until reaching Black Creek. Follow Black Creek northward for approximately 2.68 miles until reaching Old Highway 11. Continuing north on Old Highway 11 for approximately 5.47 miles until reaching the intersection of Oak Grove Road. Continuing eastward on Oak Grove Road until reaching the Intersection of Hegwood Road, then continuing north on Hegwood Road, reaching the starting point.

DISTRICT C

Starting at coordinate boundary of the Lamar County School District at 31° 7' 11.66"N latitude and 89° 39' 13.69"W longitude, continuing east to a coordinate point at 31° 9' 21.29"N latitude and 89° 35' 53.84"W at a heading of 53.37 degrees for 4.17 miles. Continuing east to a coordinate point at 31° 11' 8.99"N latitude and 89° 29' 43.29"W longitude. Continuing for approximately 0.77 miles east on Lookout Tower Road until reaching the intersection of Purvis Olah Road, continuing southeast on Purvis Olah Road until reaching the intersection of State Highway 589. Continuing north on State Highway 589 for 0.74 miles until the intersection of Norman Road. Following Norman Road for approximately 1.06 miles until the intersection of Ray Boone Road. At Ray Boone Road, continuing south for 0.46 miles until the intersection of O'Kelly Road. Follow O'Kelly Road eastward for 0.95 miles until reaching the Norfolk Southern railroad tracks. Follow the tracks northward for 1.29 miles until the intersection of Amerada Hess Road. Follow Hess Drive for approximately 0.48 miles until reaching the intersection of US Highway 11. At the intersection of US Highway 11 and Hess Drive, continue northward for 0.45 miles, until reaching the intersection of Harold Tucker Road. Follow Harold Tucker Road for approximately 1.8 miles eastward until reaching the Lamar County School District's eastern boundary. Continuing south along the Lamar County School District's eastern boundary, and including the old Lumberton School District boundary, for approximately 20.58 miles until reaching the southern Lumberton School District boundary. Continuing west along the southern Lumberton School District boundary for 5 miles and continuing north along the Lumberton School District boundary for 1.02 miles then continuing along the southern boundary of the Lumberton School District west for 2.01 miles, then continuing north along the Lumberton School District boundary for 2.03 miles, west along the Lumberton School District boundary for 0.89 miles, north for 1.99 miles and then west for 1.98 miles along the Lumberton School District boundary. Continuing northward for 0.97 miles along the Lumberton School District boundary, then west along the boundary for 1.04 miles, then north for 1.28 miles then west along the Lamar County School District boundary for 7.58 miles. Continuing along the Lamar County School District boundary, head north for 8.11 miles to the starting coordinate.

DISTRICT D

Starting at the coordinate 31° 19' 52.70"N latitude and 89° 28' 47.24"W longitude is the intersection of State Highway 589 and Raymond Rawls Road. Continuing east for 3.1 miles until the intersection of Hatten Road. Continuing south on Hatten Road for 0.23 miles until the intersection of King Road, then continuing on King Road south through the intersection of State Highway 98, continuing onto Old State Highway 11, as the road changes names. Continue on Old State Highway 11 for 0.47 miles until reaching the intersection of Lincoln Road Extension. Continue on Lincoln Road Extension for 0.67 miles until reaching the intersection of Hegwood Road, and continuing on Hegwood Road for an additional 1.39 miles until reaching the intersection of Hegwood Road and Oak Grove Road. Continuing west on Oak Grove Road until the intersection of Old Highway 11, and then heading south. Continuing south for approximately 5.47 miles until reaching the intersection of Black Creek. Following Black Creek south for approximately 2.68 miles until reaching the Norfolk Southern railroad tracks, then following the tracks south for 0.32 miles until reaching Hess Drive. Continue to follow the railroad tracks southward for 1.29 miles until the intersection of O'Kelly Road. At O'Kelly Road, follow west for 0.95 miles until reaching the

intersection of Ray Boone Road. Continuing north on Ray Boone Road for 0.46 miles until the intersection of Norman Road. Continuing west on Norman Road for approximately 1.06 miles, until reaching the intersection of State Highway 589. Continuing on State Highway 589 north for 11.84 miles until reaching the starting point.

DISTRICT E

Starting in the northwestern corner of the Lamar County School District, continuing east for approximately 11.96 miles until reaching the coordinate 31°26'1.06"N latitude and 89°27'7.74"W longitude, which would be the northeastern corner of the Lamar County School District boundary. Continuing south for 1 mile until the intersection of State Highway 42, then continuing west for 2.19 miles. Continuing south at the intersection of Simms Road, then southward as Simms Road turns eastward, continuing on Simms Road for 2.13 miles until the intersection of Epley and Simms Road, head westward on Epley Road for 3.69 miles. At the intersection of Epley Road and Oren Jones Road, continue on for 1.21 miles until the intersection of Epley Road and State Highway 589. Continue southeast on State Highway 589 for 16.8 miles until the intersection of Purvis Oloh Road. Continuing on Purvis Oloh Road head west for approximately 4.0 miles until the intersection of Lookout Tower Road. Continuing west on Lookout Tower Road for approximately 0.77 miles. At the coordinate 31°11'8.99"N latitude and 89°29'43.29"W longitude, following a straight line to coordinate 31° 9'21.29"N latitude and 89°35'53.84"W longitude for 6.4 miles at a heading of 251.51 degrees, with the straight line continuing from the previous point to an end point to the boundary of the Lamar County School District at 31° 7'11.66"N latitude and 89°39'13.69"W longitude. Continuing north along the Lamar County School District boundary for 21.43 miles until reaching the starting point.

MISSISSIPPI STATE BOARD OF EDUCATION

IN RE:

BOUNDARY OF THE LAMAR COUNTY SCHOOL DISTRICT

RESOLUTION

WHEREAS, the Lumberton Public School District and Lamar County School District, pursuant to the authority granted in Miss. Code Ann. § 37-7-103 (1972), agreed to voluntarily consolidate the Lumberton Public School District into the Lamar County School District effective July 1, 2018; and

WHEREAS, on March 24, 2017 the Commission on the Administrative Consolidation of the Lumberton Public School District established in Miss. Code Ann. § 37-7-104.5 approved the voluntary consolidation of the Lumberton Public School District and Lamar County School District; and

WHEREAS, on June 16, 2017, the Mississippi Board of Education approved the consolidation of the Lumberton Public School District with the Lamar County School District; and

WHEREAS, the Lumberton Public School District and Lamar County School District have declared their compliance with the procedures for voluntarily consolidation of a school district set forth in Miss. Code Ann. §§ 37-7-105 and 37-7-113 (1972), and

WHEREAS, the Lamar County School District and Lumberton Public School District have requested the State Board of Education to declare the new boundaries of the Lamar County School District as depicted in Exhibit "1" and more particularly described in the accompanying board district boundaries, attached and incorporated herein by reference.

NOW, THEREFORE, the State Board of Education finds, declares, and orders the following:

The new boundaries of the Lamar County School District as shown in Exhibit "1" and more fully described in the board district boundaries are hereby declared to constitute and are recognized as the boundary of the Lamar County School District effective July 1, 2018, and the Lamar County School District shall proceed with all action as outlined under law using the new boundaries.

BE IT RESOLVED by the **STATE BOARD OF EDUCATION**, this the _____ day of February, 2018.

Rosemary Aultman, Chair
Mississippi State Board of Education

Dr. Carey M. Wright
Executive Secretary
Mississippi State Board of Education

COUNTY OF HINDS

STATE OF MISSISSIPPI

This day personally appeared before me, the undersigned authority of law in and for the above named county and state, the within named Rosemary Aultman and Carey M. Wright who acknowledged that they signed the above and foregoing instrument of writing on the day and year therein mentioned for the purposes therein shown as their voluntary act and deed.

GIVEN UNDER MY HAND AND OFFICIAL SEAL on this, the _____ day of February, A.D. 2018.

NOTARY PUBLIC

My Commission Expires:

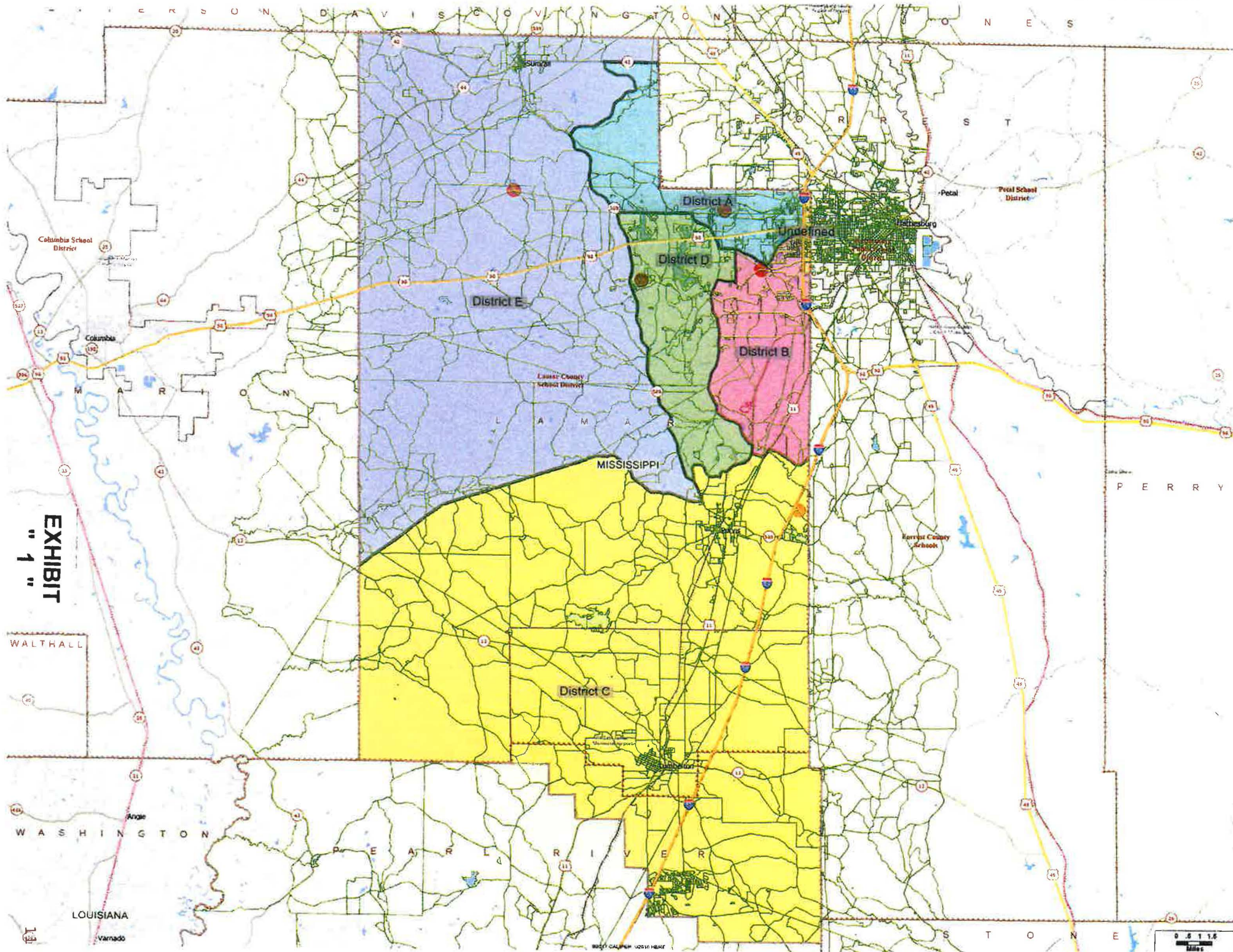


EXHIBIT
"1"

WALTHALL

WASHINGTON

LOUISIANA

Vernado

BOSS CALDER JOSTIN HART

0 0.5 1 1.5
Miles

LEGAL DESCRIPTION OF THE LAMAR COUNTY SCHOOL DISTRICT BOARD MEMBER DISTRICTS

DISTRICT A

Starting at the intersection of State Highway 42 and the Lamar County School District eastern boundary, continuing westward on State Highway 42 for 2.19 miles until the intersection of Simms Road, then southward as Simms Road turns eastward, continuing on Simms Road for 2.13 miles until the intersection of Epley and Simms Road, head westward on Epley Road for 3.69 miles. At the intersection of Epley Road and Oren Jones Road, continue on for 1.21 miles until the intersection of Epley Road and State Highway 589. Continue southeast on State Highway 589 for 4.21 miles until the intersection of State Highway 589 and Raymond Rawls Road, continuing eastward for 3.02 miles in a straight line until reaching the intersection of Hatten Road. At Hatten Road, head southward for 0.23 miles until the intersection of King Road, then continuing on King Road southeasterly through the intersection of State Highway 98, continuing onto Old State Highway 11, as the road changes names. Continue on old State Highway 11 for 0.47 miles until reaching the intersection of Lincoln Road Extension. Heading eastward on Lincoln Road Extension for 0.67 miles until the intersection of Hegwood Road, continuing on Lincoln Road Extension for an additional 1.47 miles until reaching the intersection of Lincoln Road and Oak Grove Road. Following Oak Grove Road eastward until reaching I-59, where the road ends. Using I-59 as the boundary, head northward for 1.67 miles, then westward for 5.86 miles along the Lamar County School District's northern boundary. Continuing north on the Lamar County School District boundary for 5.03 miles, then heading westward at Highway 42 intersection, until reaching the starting point.

DISTRICT B

Starting at the intersection of Hegwood Road and Lincoln Road Extension, heading eastward for an additional 1.47 miles until reaching the intersection of Lincoln Road and Oak Grove Road. Following Oak Grove Road eastward until reaching I-59. Using I-59 as the boundary, head southward for 1.79 miles, then eastward to 0.28 miles until reaching the Lamar County School District's eastern boundary. Heading southward from the Lamar County School District's eastern boundary until reaching Harold Tucker Road, approximately 7.57 miles to the south. Following Harold Tucker Road for approximately 1.8 miles westward until reaching the intersection of US Highway 11. At the intersection of Harold Tucker Road and US Highway 11, head southward for 0.45 miles until the intersection of Amerada Hess Dr. Continuing westward on Hess Drive for approximately 0.48 miles, until the intersection of the Norfolk Southern railroad tracks. Follow the NS tracks for approximately 0.32 miles northward until reaching Black Creek. Follow Black Creek northward for approximately 2.68 miles until reaching Old Highway 11. Continuing north on Old Highway 11 for approximately 5.47 miles until reaching the intersection of Oak Grove Road. Continuing eastward on Oak Grove Road until reaching the intersection of Hegwood Road, then continuing north on Hegwood Road, reaching the starting point.

DISTRICT C

Starting at coordinate boundary of the Lamar County School District at 31° 7' 11.66"N latitude and 89° 39' 13.69"W longitude, continuing east to a coordinate point at 31° 9' 21.29"N latitude and 89° 35' 53.84"W at a heading of 53.37 degrees for 4.17 miles. Continuing east to a coordinate point at 31° 11' 8.99"N latitude and 89° 29' 43.29"W longitude. Continuing for approximately 0.77 miles east on Lookout Tower Road until reaching the intersection of Purvis Oloh Road, continuing southeast on Purvis Oloh Road until reaching the intersection of State Highway 589. Continuing north on State Highway 589 for 0.74 miles until the intersection of Norman Road. Following Norman Road for approximately 1.06 miles until the intersection of Ray Boone Road. At Ray Boone Road, continuing south for 0.46 miles until the intersection of O'Kelly Road. Follow O'Kelly Road eastward for 0.95 miles until reaching the Norfolk Southern railroad tracks. Follow the tracks northward for 1.29 miles until the intersection of Amerada Hess Road. Follow Hess Drive for approximately 0.48 miles until reaching the intersection of US Highway 11. At the intersection of US Highway 11 and Hess Drive, continue northward for 0.45 miles, until reaching the intersection of Harold Tucker Road. Follow Harold Tucker Road for approximately 1.8 miles eastward until reaching the Lamar County School District's eastern boundary. Continuing south along the Lamar County School District's eastern boundary, and including the old Lumberton School District boundary, for approximately 20.58 miles until reaching the southern Lumberton School District boundary. Continuing west along the southern Lumberton School District boundary for 5 miles and continuing north along the Lumberton School District boundary for 1.02 miles then continuing along the southern boundary of the Lumberton School District west for 2.01 miles, then continuing north along the Lumberton School District boundary for 2.03 miles, west along the Lumberton School District boundary for 0.89 miles, north for 1.99 miles and then west for 1.98 miles along the Lumberton School District boundary. Continuing northward for 0.97 miles along the Lumberton School District boundary, then west along the boundary for 1.04 miles, then north for 1.28 miles then west along the Lamar County School District boundary for 7.58 miles. Continuing along the Lamar County School District boundary, head north for 8.11 miles to the starting coordinate.

DISTRICT D

Starting at the coordinate 31° 19' 52.70"N latitude and 89° 28' 47.24"W longitude is the intersection of State Highway 589 and Raymond Rawls Road. Continuing east for 3.1 miles until the intersection of Hatten Road. Continuing south on Hatten Road for 0.23 miles until the intersection of King Road, then continuing on King Road south through the intersection of State Highway 98, continuing onto Old State Highway 11, as the road changes names. Continue on Old State Highway 11 for 0.47 miles until reaching the intersection of Lincoln Road Extension. Continue on Lincoln Road Extension for 0.67 miles until reaching the intersection of Hegwood Road, and continuing on Hegwood Road for an additional 1.39 miles until reaching the intersection of Hegwood Road and Oak Grove Road. Continuing west on Oak Grove Road until the intersection of Old Highway 11, and then heading south. Continuing south for approximately 5.47 miles until reaching the intersection of Black Creek. Following Black Creek south for approximately 2.68 miles until reaching the Norfolk Southern railroad tracks, then following the tracks south for 0.32 miles until reaching Hess Drive. Continue to follow the railroad tracks southward for 1.29 miles until the intersection of O'Kelly Road. At O'Kelly Road, follow west for 0.95 miles until reaching the

intersection of Ray Boone Road. Continuing north on Ray Boone Road for 0.46 miles until the intersection of Norman Road. Continuing west on Norman Road for approximately 1.06 miles, until reaching the intersection of State Highway 589. Continuing on State Highway 589 north for 11.84 miles until reaching the starting point.

DISTRICT E

Starting in the northwestern corner of the Lamar County School District, continuing east for approximately 11.96 miles until reaching the coordinate 31°26'1.06"N latitude and 89°27'7.74"W longitude, which would be the northeastern corner of the Lamar County School District boundary. Continuing south for 1 mile until the intersection of State Highway 42, then continuing west for 2.19 miles. Continuing south at the intersection of Simms Road, then southward as Simms Road turns eastward, continuing on Simms Road for 2.13 miles until the intersection of Epley and Simms Road, head westward on Epley Road for 3.69 miles. At the intersection of Epley Road and Oren Jones Road, continue on for 1.21 miles until the intersection of Epley Road and State Highway 589. Continue southeast on State Highway 589 for 16.8 miles until the intersection of Purvis Oloh Road. Continuing on Purvis Oloh Road head west for approximately 4.0 miles until the intersection of Lookout Tower Road. Continuing west on Lookout Tower Road for approximately 0.77 miles. At the coordinate 31°11'8.99"N latitude and 89°29'43.29"W longitude, following a straight line to coordinate 31°9'21.29"N latitude and 89°35'53.84"W longitude for 6.4 miles at a heading of 251.51 degrees, with the straight line continuing from the previous point to an end point to the boundary of the Lamar County School District at 31°7'11.66"N latitude and 89°39'13.69"W longitude. Continuing north along the Lamar County School District boundary for 21.43 miles until reaching the starting point.