

2015 District Graduation and Dropout Rates

Background

In accordance with 34 C.F.R. 200.19(b) and MS Code 37-17-6, the 2015 graduation and dropout rates were calculated following the four-year adjusted cohort method. The method determines the high school completion status for students four (4) years after entering Grade 9 for the first time. The 2015 rates are based on students who entered Grade 9 for the first time during the school year (SY) 2010-11.

Enclosures

The enclosed graduation rate data are included for all districts serving students who enrolled in Grade 9 for the first time during SY 2010-11.

- 1) 2015 District Graduation and Dropout Rates Summary
- 2) 2015 District Graduation Rates -
 - a. Sorted by District Name
 - b. Sorted by Percent (PCT)
- 3) 2015 District Dropout Rates -
 - a. Sorted by District Name
 - b. Sorted by Percent (PCT)
- 4) 2015 District Graduation Rates for Students with Disabilities -
 - a. Sorted by District Name
 - b. Sorted by Percent (PCT)

Technical Notes:

- The report includes graduation and dropout rates for 162 districts that served students who enrolled in Grade 9 for the first time during SY 2010-11.
- The following district consolidated and/or closed after SY 2011-12: Drew. The following six (6) districts consolidated and/or closed after SY 2013-2014: Benoit, Clay County, Hinds AHS, Mound Bayou, Oktibbeha County, and Shaw.
- Clay County School District did not receive a graduation or dropout rate due to not serving students enrolled in Grade 12.
- N-counts are rounded to the nearest whole number.
- Two asterisks (**) indicate the district did not meet the minimum n-count for the calculation of the graduation rate.
- Districts with a graduation rate less than five (5) percent are reported as 5.0%.

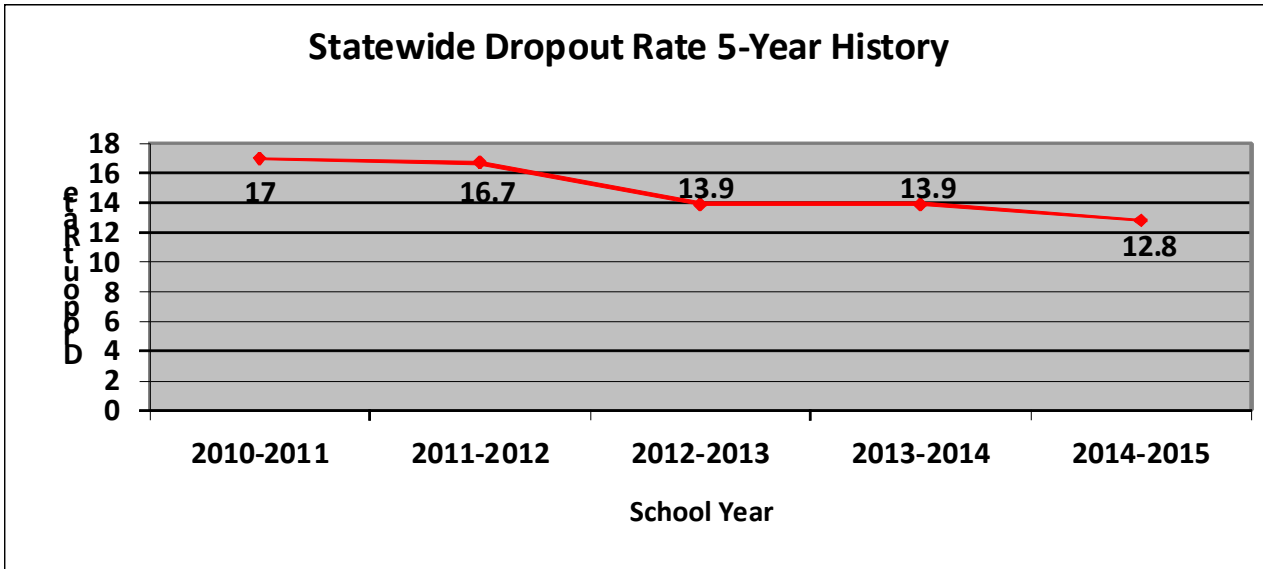
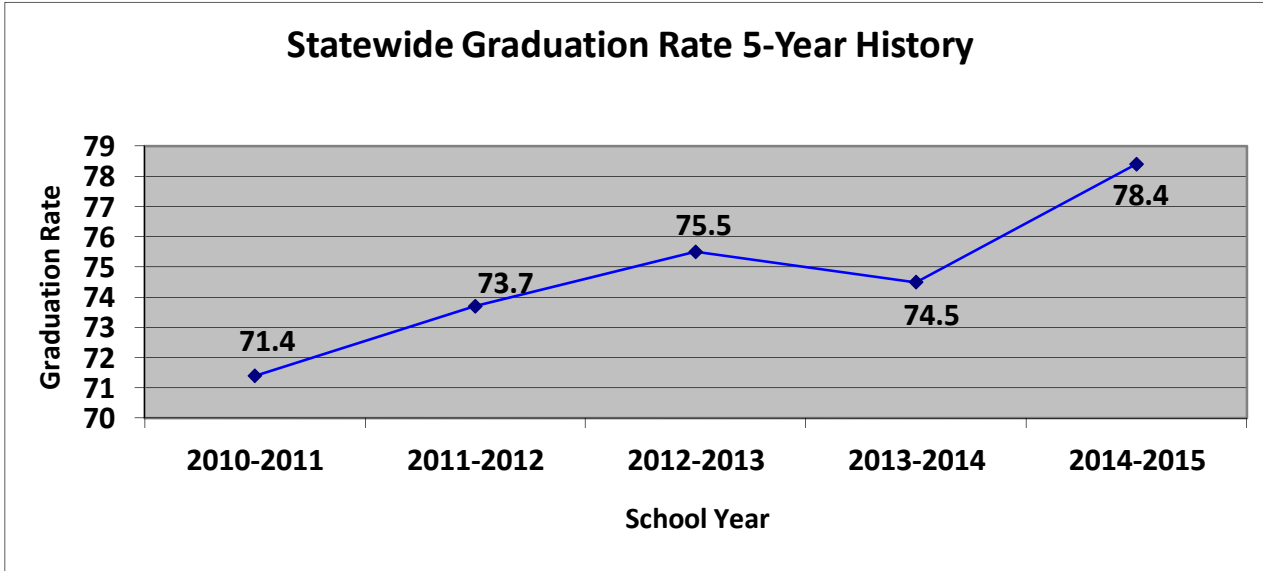
Attachment 1:

2015 Graduation and Dropout Rates Summary

4-Year Graduation Rates

Division of Research and Development
 J.P. Beaudoin, Ed.D., Chief

April 2016



Comparison of the 2015 State Level Graduation and Dropout Rates For All Students and Students with Disabilities

	Graduation Rates	Dropout Rates
All Students	78.4%	12.8%
Students with Disabilities	27.5%	20.1%

Summary of 2015 District Level Graduation and Dropout Rates

Graduation Rates

	Statewide Rate	Lowest District Rate	Highest District Rate
Graduation Rates	78.4%	1.1%	98.4%

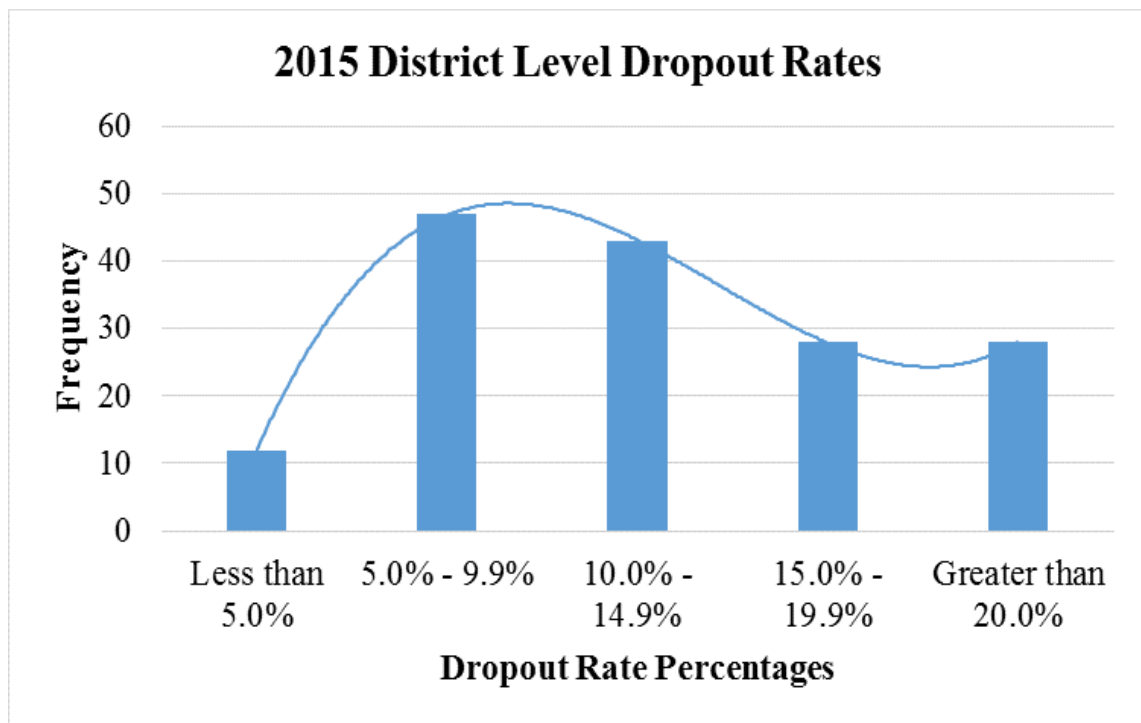
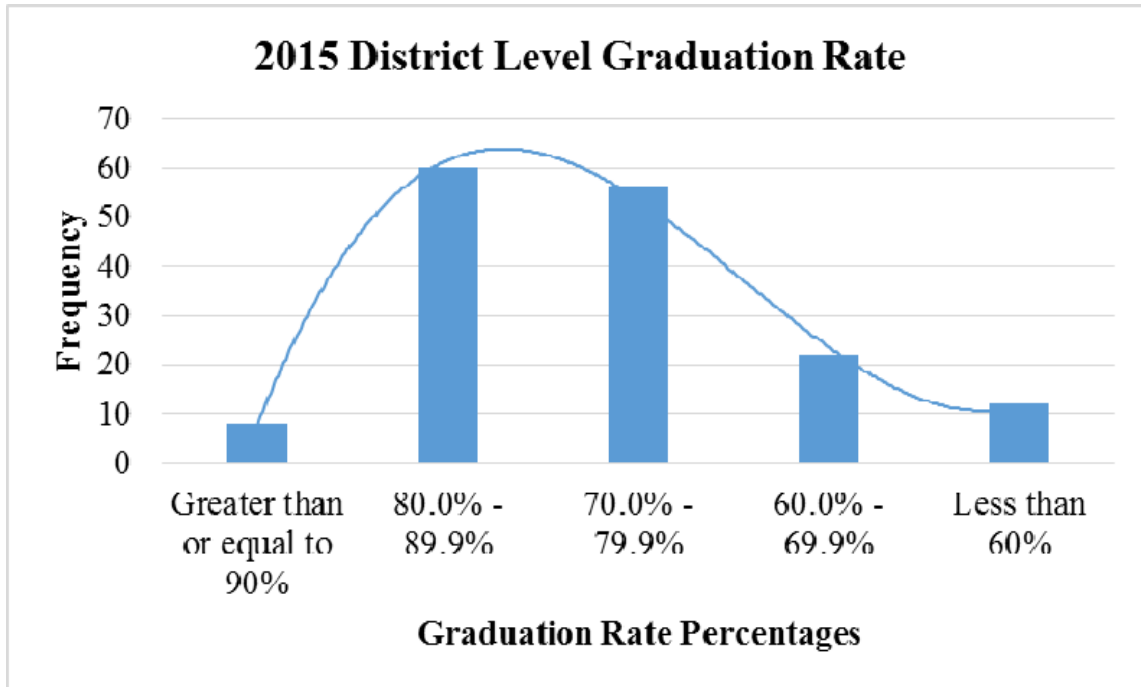
Dropout Rates

	Statewide Rate	Lowest District Rate	Highest District Rate
Dropout Rates	12.8%	0.0%	89.3%

4-Year Graduation Rates

Division of Research and Development
 J.P. Beaudoin, Ed.D., Chief

April 2016



Top 10 Districts with the Highest Graduation Rates

Rank	District	Graduation Rate
1	MS School for Math and Science	98.4%
2	MS School for the Arts	97.5%
3	Benoit	94.1%
4	Enterprise	92.0%
5	Lamar County	90.8%
6	Holly Springs	90.6%
7	Booneville	90.5%
8	Columbia	90.1%
9	Newton County	89.7%
10	Bay St. Louis	89.4%

- Note that ranking does not include suppressed data.

Top 10 Districts with the Lowest Dropout Rates

Rank	District	Dropout Rate
1	Benoit	0.0%
2	West Tallahatchie	0.0%
3	MS School for Math and Science	1.6%
4	MS School for the Arts	2.5%
5	Booneville	2.9%
6	Bay St. Louis	3.4%
7	North Panola	3.9%
8	Holly Springs	4.1%
9	Franklin County	4.3%
9	Lamar County	4.3%

- Note that ranking does not include suppressed data.

Summary of 2015 District Level Graduation Rates for Students with Disabilities

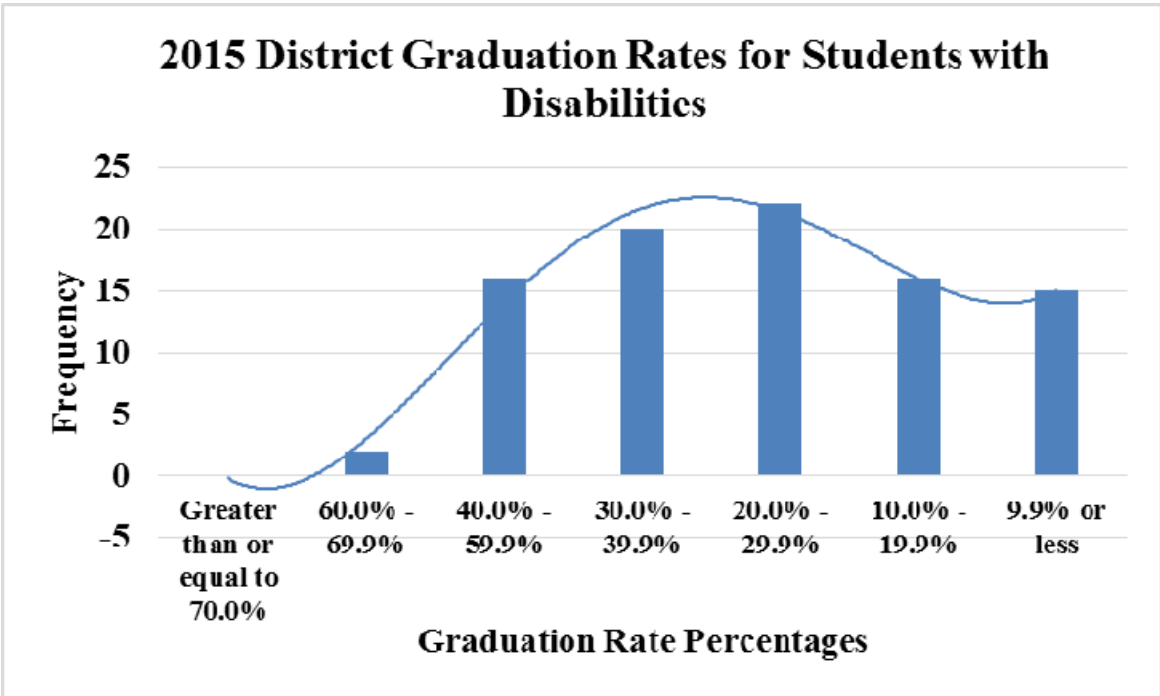
Graduation Rates

	Statewide Rate	Lowest District Rate	Highest District Rate
Graduation Rates	27.5%	0.0%	63.3%

4-Year Graduation Rates

Division of Research and Development
 J.P. Beaudoin, Ed.D., Chief

April 2016



Top 10 Districts with the Highest Graduation Rates for Students with Disabilities

Rank	District	Graduation Rate
1	Forrest AHS	63.3%
2	Bay St. Louis	60.3%
3	Lamar County	58.4%
3	Petal	58.4%
5	Itawamba County	58.1%
6	Hancock County	52.8%
7	Clinton	52.4%
8	DeSoto County	50.1%
9	Madison County	49.8%
10	Ocean Springs	49.3%

- Note that ranking does not include suppressed data.

Attachment 2:

2015 District Graduation Rates Sorted by District Name

4-Year Graduation Rates

Division of Research and Development
J.P. Beaudoin, Ed.D., Chief

April 2016

District Name	N-Count*	4-Year Graduation Rate
Aberdeen	101	68.7%
Alcorn	245	83.1%
Amite County	62	79.5%
Amory	114	86.6%
Attala County	56	71.1%
Baldwyn	66	83.2%
Bay St. Louis	113	89.4%
Benoit	17	94.1%
Benton County	84	79.9%
Biloxi	353	83.6%
Booneville	69	90.5%
Brookhaven	205	69.3%
Calhoun County	149	73.5%
Canton	201	52.4%
Carroll County	71	71.9%
Chickasaw County	37	64.1%
Choctaw County	81	78.5%
Claiborne County	98	69.3%
Clarksdale	191	73.4%
Cleveland	218	71.2%
Clinton	362	86.4%
Coahoma AHS	54	78.0%
Coahoma County	76	67.2%
Coffeerville	45	70.7%
Columbia	114	90.1%
Columbus	308	70.3%
Copiah County	167	80.3%
Corinth	137	86.3%
Covington County	207	65.5%
DeSoto County	2265	88.8%
Drew	13	46.2%
Durant	21	52.7%
East Jasper	79	69.6%
East Tallahatchie	84	79.3%
Ellisville State School	**	**

4-Year Graduation Rates

Division of Research and Development
J.P. Beaudoin, Ed.D., Chief

April 2016

District Name	N-Count*	4-Year Graduation Rate
Enterprise	67	92.0%
Forest City	77	80.4%
Forrest AHS	158	82.1%
Forrest County	62	82.3%
Franklin County	85	88.4%
George County	250	82.3%
Greene County	137	88.2%
Greenville	390	58.0%
Greenwood	187	70.3%
Grenada	260	76.9%
Gulfport	368	85.6%
Hancock County	306	89.2%
Harrison County	930	80.7%
Hattiesburg	327	69.5%
Hazlehurst City	93	76.8%
Hinds AHS	49	61.0%
Hinds County	457	80.6%
Hollandale	39	88.9%
Holly Springs	89	90.6%
Holmes County	212	78.8%
Houston Separate	122	75.6%
Hudspeth Center	**	**
Humphreys County	108	78.8%
Indianola	146	71.3%
Itawamba County	229	88.4%
Jackson County	630	82.9%
Jackson Public	1938	66.9%
Jefferson County	123	74.3%
Jefferson Davis	159	63.5%
Jones County	532	78.5%
Kemper County	58	81.0%
Kosciusko	150	84.2%
Lafayette County	169	86.2%
Lamar County	582	90.8%
Lauderdale County	452	79.8%

4-Year Graduation Rates

Division of Research and Development
J.P. Beaudoin, Ed.D., Chief

April 2016

District Name	N-Count*	4-Year Graduation Rate
Laurel	164	62.2%
Lawrence County	161	76.0%
Leake County	180	75.1%
Lee County	470	72.4%
Leflore County	186	68.8%
Leland	83	59.7%
Lincoln County	210	81.7%
Long Beach	209	87.7%
Louisville	213	73.4%
Lowndes County	345	85.2%
Lumberton	48	77.2%
Madison	867	88.9%
Magnolia Grove	**	**
Marion County	158	75.0%
Marshall County	203	77.7%
McComb	166	70.4%
Meridian	393	68.6%
Monroe County	147	82.4%
Montgomery County	21	64.7%
Moss Point	177	62.0%
Mound Bayou	48	76.4%
MS School for Math and Science	64	98.4%
MS School for the Arts	40	97.5%
MS School for the Blind	**	**
MS School for the Deaf	17	17.8%
MS State Hospital	**	**
Natchez-Adams	213	71.7%
Neshoba County	185	82.9%
Nettleton	88	73.1%
New Albany	122	82.1%
Newton City	76	74.9%
Newton County	128	89.7%
North Bolivar	52	77.0%
North Panola	87	85.8%
North Pike	133	76.6%

4-Year Graduation Rates

Division of Research and Development
J.P. Beaudoin, Ed.D., Chief

April 2016

District Name	N-Count*	4-Year Graduation Rate
North Tippah	74	74.6%
Noxubee County	127	78.5%
Oakley Youth Development Center	22	5.0%
Ocean Springs	386	85.2%
Okolona Separate	53	60.9%
Oktibbeha County	56	49.4%
Oxford	228	87.0%
Pascagoula	501	81.2%
Pass Christian	109	85.8%
Pearl	257	82.6%
Pearl River	230	79.3%
Perry County	97	66.7%
Petal	271	86.7%
Philadelphia	81	83.2%
Picayune	212	76.2%
Pontotoc City	154	81.1%
Pontotoc County	239	86.8%
Poplarville	138	81.1%
Prentiss County	159	82.3%
Quitman	115	84.1%
Quitman County	91	75.7%
Rankin County	1277	85.4%
Richton	50	82.0%
Roger Amos McMurtry	10	8.4%
Scott County	234	81.3%
Senatobia	123	81.9%
Shaw	48	85.4%
Simpson County	255	71.2%
Smith County	179	77.6%
South Delta	67	72.4%
South Panola	283	73.8%
South Pike	86	81.9%
South Tippah	186	85.6%
Starkville	276	77.1%
Stone County	157	70.8%

4-Year Graduation Rates

Division of Research and Development
J.P. Beaudoin, Ed.D., Chief

April 2016

District Name	N-Count*	4-Year Graduation Rate
Stovall SPED Complex	**	**
Sunflower County	101	59.0%
Tate County	180	70.7%
Tishomingo County	219	83.5%
Tunica County	127	68.0%
Tupelo	517	78.7%
Union City	66	84.8%
Union County	173	87.5%
Vicksburg-Warren	573	65.9%
Walthall County	146	67.1%
Water Valley	73	84.7%
Wayne County	239	74.4%
Webster County	125	87.3%
West Bolivar	73	72.1%
West Jasper	96	83.1%
West Point	211	83.5%
West Tallahatchie	41	79.6%
Western Line	139	73.3%
Wilkinson County	78	73.3%
Winona	80	79.0%
Yazoo City	147	61.1%
Yazoo County	125	70.7%
State of Mississippi	32448	78.4%

*N-Counts are rounded to the nearest whole number.

**indicates the district did not meet the minimum n-count

Rates below 5% are reported as 5%.

Attachment 3:

2015 District Graduation Rates Sorted by Percentage (PCT)

- Note that ranking does not include suppressed data.

4-Year Graduation Rates

Division of Research and Development
J.P. Beaudoin, Ed.D., Chief

April 2016

District Name	N-Count*	4-Year Graduation Rate
MS School for Math and Science	64	98.4%
MS School for the Arts	40	97.5%
Benoit	17	94.1%
Enterprise	67	92.0%
Lamar County	582	90.8%
Holly Springs	89	90.6%
Booneville	69	90.5%
Columbia	114	90.1%
Newton County	128	89.7%
Bay St. Louis	113	89.4%
Hancock County	306	89.2%
Hollandale	39	88.9%
Madison	867	88.9%
DeSoto County	2265	88.8%
Franklin County	85	88.4%
Itawamba County	229	88.4%
Greene County	137	88.2%
Long Beach	209	87.7%
Union County	173	87.5%
Webster County	125	87.3%
Oxford	228	87.0%
Pontotoc County	239	86.8%
Petal	271	86.7%
Amory	114	86.6%
Clinton	362	86.4%
Corinth	137	86.3%
Lafayette County	169	86.2%
North Panola	87	85.8%
Pass Christian	109	85.8%
Gulfport	368	85.6%
South Tippah	186	85.6%
Rankin County	1277	85.4%
Shaw	48	85.4%
Lowndes County	345	85.2%
Ocean Springs	386	85.2%

4-Year Graduation Rates

Division of Research and Development
J.P. Beaudoin, Ed.D., Chief

April 2016

District Name	N-Count*	4-Year Graduation Rate
Union City	66	84.8%
Water Valley	73	84.7%
Kosciusko	150	84.2%
Quitman	115	84.1%
Biloxi	353	83.6%
Tishomingo County	219	83.5%
West Point	211	83.5%
Baldwyn	66	83.2%
Philadelphia	81	83.2%
Alcorn	245	83.1%
West Jasper	96	83.1%
Jackson County	630	82.9%
Neshoba County	185	82.9%
Pearl	257	82.6%
Monroe County	147	82.4%
Forrest County	62	82.3%
George County	250	82.3%
Prentiss County	159	82.3%
Forrest AHS	158	82.1%
New Albany	122	82.1%
Richton	50	82.0%
Senatobia	123	81.9%
South Pike	86	81.9%
Lincoln County	210	81.7%
Scott County	234	81.3%
Pascagoula	501	81.2%
Pontotoc City	154	81.1%
Poplarville	138	81.1%
Kemper County	58	81.0%
Harrison County	930	80.7%
Hinds County	457	80.6%
Forest City	77	80.4%
Copiah County	167	80.3%
Benton County	84	79.9%
Lauderdale County	452	79.8%

4-Year Graduation Rates

Division of Research and Development
J.P. Beaudoin, Ed.D., Chief

April 2016

District Name	N-Count*	4-Year Graduation Rate
West Tallahatchie	41	79.6%
Amite County	62	79.5%
East Tallahatchie	84	79.3%
Pearl River	230	79.3%
Winona	80	79.0%
Holmes County	212	78.8%
Humphreys County	108	78.8%
Tupelo	517	78.7%
Choctaw County	81	78.5%
Jones County	532	78.5%
Noxubee County	127	78.5%
Coahoma AHS	54	78.0%
Marshall County	203	77.7%
Smith County	179	77.6%
Lumberton	48	77.2%
Starkville	276	77.1%
North Bolivar	52	77.0%
Grenada	260	76.9%
Hazlehurst City	93	76.8%
North Pike	133	76.6%
Mound Bayou	48	76.4%
Picayune	212	76.2%
Lawrence County	161	76.0%
Quitman County	91	75.7%
Houston Separate	122	75.6%
Leake County	180	75.1%
Marion County	158	75.0%
Newton City	76	74.9%
North Tippah	74	74.6%
Wayne County	239	74.4%
Jefferson County	123	74.3%
South Panola	283	73.8%
Calhoun County	149	73.5%
Clarksdale	191	73.4%
Louisville	213	73.4%

4-Year Graduation Rates

Division of Research and Development
J.P. Beaudoin, Ed.D., Chief

April 2016

District Name	N-Count*	4-Year Graduation Rate
Western Line	139	73.3%
Wilkinson County	78	73.3%
Nettleton	88	73.1%
Lee County	470	72.4%
South Delta	67	72.4%
West Bolivar	73	72.1%
Carroll County	71	71.9%
Natchez-Adams	213	71.7%
Indianola	146	71.3%
Cleveland	218	71.2%
Simpson County	255	71.2%
Attala County	56	71.1%
Stone County	157	70.8%
Coffeeville	45	70.7%
Tate County	180	70.7%
Yazoo County	125	70.7%
McComb	166	70.4%
Columbus	308	70.3%
Greenwood	187	70.3%
East Jasper	79	69.6%
Hattiesburg	327	69.5%
Brookhaven	205	69.3%
Claiborne County	98	69.3%
Leflore County	186	68.8%
Aberdeen	101	68.7%
Meridian	393	68.6%
Tunica County	127	68.0%
Coahoma County	76	67.2%
Walthall County	146	67.1%
Jackson Public	1938	66.9%
Perry County	97	66.7%
Vicksburg-Warren	573	65.9%
Covington County	207	65.5%
Montgomery County	21	64.7%
Chickasaw County	37	64.1%

4-Year Graduation Rates

Division of Research and Development
J.P. Beaudoin, Ed.D., Chief

April 2016

District Name	N-Count*	4-Year Graduation Rate
Jefferson Davis	159	63.5%
Laurel	164	62.2%
Moss Point	177	62.0%
Yazoo City	147	61.1%
Hinds AHS	49	61.0%
Okolona Separate	53	60.9%
Leland	83	59.7%
Sunflower County	101	59.0%
Greenville	390	58.0%
Durant	21	52.7%
Canton	201	52.4%
Oktibbeha County	56	49.4%
Drew School District	13	46.2%
MS School for the Deaf	17	17.8%
Roger Amos McMurtry	10	8.4%
Oakley Youth Development Center	22	5.0%
Stovall SPED Complex	**	**
MS School for the Blind	**	**
Hudspeth Center	**	**
Magnolia Grove	**	**
Ellisville State School	**	**
MS State Hospital	**	**
State of Mississippi	32448	78.4%

*N-Counts are rounded to the nearest whole number.

**indicates the district did not meet the minimum n-count

Rates below 5% are reported as 5%.

Attachment 4:

2015 District Dropout Rates Sorted by District Name

4-Year Graduation Rates

Division of Research and Development
J.P. Beaudoin, Ed.D., Chief

April 2016

District Name	N-Count*	4-Year Dropout Rate
Aberdeen	101	20.2%
Alcorn	245	7.2%
Amite County	62	15.5%
Amory	114	7.1%
Attala County	56	13.0%
Baldwyn	66	12.6%
Bay St. Louis	113	3.4%
Benoit	17	0.0%
Benton County	84	6.6%
Biloxi	353	11.2%
Booneville	69	2.9%
Brookhaven	205	21.6%
Calhoun County	149	17.8%
Canton	201	25.1%
Carroll County	71	18.4%
Chickasaw County	37	6.4%
Choctaw County	81	10.3%
Claiborne County	98	16.1%
Clarksdale	191	21.7%
Cleveland	218	18.9%
Clinton	362	9.5%
Coahoma AHS	54	17.1%
Coahoma County	76	18.0%
Coffeeville	45	16.3%
Columbia	114	6.9%
Columbus	308	17.1%
Copiah County	167	15.4%
Corinth	137	5.1%
Covington County	207	19.0%
DeSoto County	2265	5.3%
Drew	13	14.8%
Durant	21	28.6%
East Jasper	79	12.8%

4-Year Graduation Rates

Division of Research and Development
J.P. Beaudoin, Ed.D., Chief

April 2016

District Name	N-Count*	4-Year Dropout Rate
East Tallahatchie	84	12.3%
Ellisville State School	**	**
Enterprise	67	5.0%
Forest City	77	7.9%
Forrest AHS	158	14.9%
Forrest County	62	10.6%
Franklin County	85	4.3%
George County	250	9.4%
Greene County	137	4.7%
Greenville	390	27.9%
Greenwood	187	16.3%
Grenada	260	8.5%
Gulfport	368	6.2%
Hancock County	306	6.1%
Harrison County	930	11.8%
Hattiesburg	327	14.1%
Hazlehurst City	93	17.6%
Hinds AHS	49	26.5%
Hinds County	457	9.1%
Hollandale	39	10.9%
Holly Springs	89	4.1%
Holmes County	212	13.0%
Houston Separate	122	14.5%
Hudspeth Center	**	**
Humphreys County	108	13.8%
Indianola	146	21.3%
Itawamba County	229	5.6%
Jackson County	630	10.2%
Jackson Public	1938	23.5%
Jefferson County	123	9.8%
Jefferson Davis	159	22.7%
Jones County	532	15.6%
Kemper County	58	5.6%

4-Year Graduation Rates

Division of Research and Development
J.P. Beaudoin, Ed.D., Chief

April 2016

District Name	N-Count*	4-Year Dropout Rate
Kosciusko	150	5.8%
Lafayette County	169	6.8%
Lamar County	582	4.3%
Lauderdale County	452	12.7%
Laurel	164	27.6%
Lawrence County	161	15.6%
Leake County	180	10.2%
Lee County	470	19.8%
Leflore County	186	19.6%
Leland	83	27.6%
Lincoln County	210	12.1%
Long Beach	209	5.6%
Louisville	213	18.9%
Lowndes County	345	8.6%
Lumberton	48	11.6%
Madison	867	7.3%
Magnolia Grove SPED	**	**
Marion County	158	12.4%
Marshall County	203	13.2%
McComb	166	21.2%
Meridian	393	25.3%
Monroe County	147	6.4%
Montgomery County	21	30.5%
Moss Point	177	24.1%
Mound Bayou	48	8.2%
MS School for Math and Science	64	1.6%
MS School for the Arts	40	2.5%
MS School for the Blind	**	**
MS School for the Deaf	17	11.8%
MS State Hospital	**	**
Natchez-Adams	213	15.9%
Neshoba County	185	13.5%
Nettleton	88	18.0%

4-Year Graduation Rates

Division of Research and Development
J.P. Beaudoin, Ed.D., Chief

April 2016

District Name	N-Count*	4-Year Dropout Rate
New Albany	122	6.0%
Newton City	76	9.6%
Newton County	128	4.8%
North Bolivar	52	13.6%
North Panola	87	3.9%
North Pike	133	21.2%
North Tippah	74	11.7%
Noxubee County	127	13.7%
Oakley Youth Development Center	22	89.3%
Ocean Springs	386	8.3%
Okolona Separate	53	18.2%
Oktibbeha County	56	22.4%
Oxford	228	7.8%
Pascagoula	501	10.3%
Pass Christian	109	5.5%
Pearl	257	9.6%
Pearl River	230	14.5%
Perry County	97	26.3%
Petal	271	8.2%
Philadelphia	81	11.8%
Picayune	212	12.6%
Pontotoc City	154	14.2%
Pontotoc County	239	8.0%
Poplarville	138	15.5%
Prentiss County	159	7.4%
Quitman	115	5.4%
Quitman County	91	10.8%
Rankin County	1277	8.0%
Richton	50	16.2%
Roger Amos McMurtry	10	70.9%
Scott County	234	8.1%
Senatobia	123	8.6%
Shaw	48	10.7%

4-Year Graduation Rates

Division of Research and Development
J.P. Beaudoin, Ed.D., Chief

April 2016

District Name	N-Count*	4-Year Dropout Rate
Simpson County	255	13.2%
Smith County	179	9.0%
South Delta	67	14.5%
South Panola	283	12.3%
South Pike	86	14.9%
South Tippah	186	6.5%
Starkville	276	10.1%
Stone County	157	16.5%
Stovall SPED Complex	**	**
Sunflower County	101	14.0%
Tate County	180	17.3%
Tishomingo County	219	7.0%
Tunica County	127	21.9%
Tupelo	517	11.5%
Union City	66	9.1%
Union County	173	8.4%
Vicksburg-Warren	573	20.7%
Walthall County	146	22.3%
Water Valley	73	7.2%
Wayne County	239	13.7%
Webster County	125	6.4%
West Bolivar	73	19.7%
West Jasper	96	5.6%
West Point	211	9.7%
West Tallahatchie	41	0.0%
Western Line	139	18.5%
Wilkinson County	78	15.2%
Winona	80	12.9%
Yazoo City	147	21.8%
Yazoo County	125	22.3%
State of Mississippi	32448	12.8%

*N-Counts are rounded to the nearest whole number.

**indicates the district did not meet the minimum n-count

Attachment 5:

2015 District Dropout Rates Sorted by Percentage (PCT)

- Note that ranking does not include suppressed data.

4-Year Graduation Rates

Division of Research and Development
J.P. Beaudoin, Ed.D., Chief

April 2016

District Name	N-Count*	4-Year Dropout Rate
Benoit	17	0.0%
West Tallahatchie	41	0.0%
MS School for Math and Science	64	1.6%
MS School for the Arts	40	2.5%
Booneville	69	2.9%
Bay St. Louis	113	3.4%
North Panola	87	3.9%
Holly Springs	89	4.1%
Franklin County	85	4.3%
Lamar County	582	4.3%
Greene County	137	4.7%
Newton County	128	4.8%
Enterprise	67	5.0%
Corinth	137	5.1%
DeSoto County	2265	5.3%
Quitman	115	5.4%
Pass Christian	109	5.5%
Itawamba County	229	5.6%
Kemper County	58	5.6%
Long Beach	209	5.6%
West Jasper	96	5.6%
Kosciusko	150	5.8%
New Albany	122	6.0%
Hancock County	306	6.1%
Gulfport	368	6.2%
Chickasaw County	37	6.4%
Monroe County	147	6.4%
Webster County	125	6.4%
South Tippah	186	6.5%
Benton County	84	6.6%
Lafayette County	169	6.8%
Columbia	114	6.9%
Tishomingo County	219	7.0%

4-Year Graduation Rates

Division of Research and Development
J.P. Beaudoin, Ed.D., Chief

April 2016

District Name	N-Count*	4-Year Dropout Rate
Amory	114	7.1%
Alcorn	245	7.2%
Water Valley	73	7.2%
Madison	867	7.3%
Prentiss County	159	7.4%
Oxford	228	7.8%
Forest City	77	7.9%
Pontotoc County	239	8.0%
Rankin County	1277	8.0%
Scott County	234	8.1%
Mound Bayou	48	8.2%
Petal	271	8.2%
Ocean Springs	386	8.3%
Union County	173	8.4%
Grenada	260	8.5%
Lowndes County	345	8.6%
Senatobia	123	8.6%
Smith County	179	9.0%
Hinds County	457	9.1%
Union City	66	9.1%
George County	250	9.4%
Clinton	362	9.5%
Newton City	76	9.6%
Pearl	257	9.6%
West Point	211	9.7%
Jefferson County	123	9.8%
Starkville	276	10.1%
Jackson County	630	10.2%
Leake County	180	10.2%
Choctaw County	81	10.3%
Pascagoula	501	10.3%
Forrest County	62	10.6%
Shaw	48	10.7%

4-Year Graduation Rates

Division of Research and Development
J.P. Beaudoin, Ed.D., Chief

April 2016

District Name	N-Count*	4-Year Dropout Rate
Quitman County	91	10.8%
Hollandale	39	10.9%
Biloxi	353	11.2%
Tupelo	517	11.5%
Lumberton	48	11.6%
North Tippah	74	11.7%
Harrison County	930	11.8%
MS School for the Deaf	17	11.8%
Philadelphia	81	11.8%
Lincoln County	210	12.1%
East Tallahatchie	84	12.3%
South Panola	283	12.3%
Marion County	158	12.4%
Baldwyn	66	12.6%
Picayune	212	12.6%
Lauderdale County	452	12.7%
East Jasper	79	12.8%
Winona	80	12.9%
Attala County	56	13.0%
Holmes County	212	13.0%
Marshall County	203	13.2%
Simpson County	255	13.2%
Neshoba County	185	13.5%
North Bolivar	52	13.6%
Noxubee County	127	13.7%
Wayne County	239	13.7%
Humphreys County	108	13.8%
Sunflower County	101	14.0%
Hattiesburg	327	14.1%
Pontotoc City	154	14.2%
Houston Separate	122	14.5%
Pearl River	230	14.5%
South Delta	67	14.5%

4-Year Graduation Rates

Division of Research and Development
J.P. Beaudoin, Ed.D., Chief

April 2016

District Name	N-Count*	4-Year Dropout Rate
Forrest AHS	158	14.9%
South Pike	86	14.9%
Drew School	13	14.8%
Wilkinson County	78	15.2%
Copiah County	167	15.4%
Amite County	62	15.5%
Poplarville	138	15.5%
Jones County	532	15.6%
Lawrence County	161	15.6%
Natchez-Adams	213	15.9%
Claiborne County	98	16.1%
Richton	50	16.2%
Coffeerville	45	16.3%
Greenwood	187	16.3%
Stone County	157	16.5%
Coahoma AHS	54	17.1%
Columbus	308	17.1%
Tate County	180	17.3%
Hazlehurst City	93	17.6%
Calhoun County	149	17.8%
Coahoma County	76	18.0%
Nettleton	88	18.0%
Okolona Separate	53	18.2%
Carroll County	71	18.4%
Western Line	139	18.5%
Cleveland	218	18.9%
Louisville	213	18.9%
Covington County	207	19.0%
Leflore County	186	19.6%
West Bolivar	73	19.7%
Lee County	470	19.8%
Aberdeen	101	20.2%
Vicksburg-Warren	573	20.7%

4-Year Graduation Rates

Division of Research and Development
J.P. Beaudoin, Ed.D., Chief

April 2016

District Name	N-Count*	4-Year Dropout Rate
McComb	166	21.2%
North Pike	133	21.2%
Indianola	146	21.3%
Brookhaven	205	21.6%
Clarksdale	191	21.7%
Yazoo City	147	21.8%
Tunica County	127	21.9%
Walthall County	146	22.3%
Yazoo County	125	22.3%
Oktibbeha County	56	22.4%
Jefferson Davis	159	22.7%
Jackson Public	1938	23.5%
Moss Point	177	24.1%
Canton	201	25.1%
Meridian	393	25.3%
Perry County	97	26.3%
Hinds AHS	49	26.5%
Laurel	164	27.6%
Leland	83	27.6%
Greenville	390	27.9%
Durant	21	28.6%
Montgomery County	21	30.5%
Roger Amos McMurtry	10	70.9%
Oakley Youth Development Center	22	89.3%
Stovall SPED Complex	**	**
MS School for the Blind	**	**
Hudspeth Center	**	**
Magnolia Grove	**	**
Ellisville State School	**	**
MS State Hospital	**	**
State of Mississippi	32448	12.8%

*N-Counts are rounded to the nearest whole number.

**indicates the district did not meet the minimum n-count

Attachment 6:

2015 District Graduation Rates for Students with Disabilities Sorted by District Name

4-Year Graduation Rates

Division of Research and Development
J.P. Beaudoin, Ed.D., Chief

April 2016

District Name	N-Count*	4-Year Graduation Rate for Students with Disabilities
Aberdeen	14	35.1%
Alcorn	26	19.3%
Amite County	**	**
Amory	**	**
Attala County	**	**
Baldwyn	**	**
Bay St. Louis	16	60.3%
Benoit	**	**
Benton County	**	**
Biloxi	29	20.9%
Booneville	**	**
Brookhaven	14	37.1%
Calhoun County	18	32.7%
Canton	31	5.0%
Carroll County	**	**
Chickasaw County	**	**
Choctaw County	**	**
Claiborne County	**	**
Clarksdale	**	**
Cleveland	17	5.0%
Clinton	23	52.4%
Coahoma AHS	**	**
Coahoma County	**	**
Coffeeville	**	**
Columbia	**	**
Columbus	35	19.4%
Copiah County	**	**
Corinth	14	43.3%
Covington County	29	5.0%
DeSoto County	206	50.1%
Drew School	**	**
Durant	**	**
East Jasper	14	7.1%

4-Year Graduation Rates

Division of Research and Development
J.P. Beaudoin, Ed.D., Chief

April 2016

District Name	N-Count*	4-Year Graduation Rate for Students with Disabilities
East Tallahatchie	**	**
Ellisville State School	**	**
Enterprise	**	**
Forest City	**	**
Forrest AHS	14	63.3%
Forrest County	**	**
Franklin County	10	38.5%
George County	12	42.6%
Greene County	**	**
Greenville	53	5.3%
Greenwood	13	7.5%
Grenada	24	5.0%
Gulfport	33	30.9%
Hancock County	27	52.8%
Harrison County	74	16.6%
Hattiesburg	48	28.2%
Hazlehurst City	**	**
Hinds AHS	**	**
Hinds County	51	15.4%
Hollandale	**	**
Holly Springs	**	**
Holmes County	16	18.8%
Houston Separate	11	9.3%
Hudspeth Center	**	**
Humphreys County	**	**
Indianola	**	**
Itawamba County	22	58.1%
Jackson County	45	27.4%
Jackson Public	211	18.6%
Jefferson County	**	**
Jefferson Davis	18	12.6%
Jones County	39	24.9%
Kemper County	**	**

4-Year Graduation Rates

Division of Research and Development
J.P. Beaudoin, Ed.D., Chief

April 2016

District Name	N-Count*	4-Year Graduation Rate for Students with Disabilities
Kosciusko	16	17.4%
Lafayette County	20	39.5%
Lamar County	56	58.4%
Lauderdale County	32	32.0%
Laurel	11	38.5%
Lawrence County	12	25.2%
Leake County	11	18.4%
Lee County	56	26.5%
Leflore County	16	41.4%
Leland	**	**
Lincoln County	15	40.3%
Long Beach	19	39.6%
Louisville	20	23.3%
Lowndes County	17	39.3%
Lumberton	**	**
Madison	46	49.8%
Magnolia Grove	**	**
Marion County	22	18.7%
Marshall County	19	5.0%
McComb	19	21.4%
Meridian	27	22.8%
Monroe County	15	33.3%
Montgomery County	**	**
Moss Point	23	21.8%
Mound Bayou	**	**
MS School for Math and Science	**	**
MS School for the Arts	**	**
MS School for the Blind	**	**
MS School for the Deaf	17	17.8%
MS State Hospital	**	**
Natchez-Adams	27	7.5%
Neshoba County	**	**
Nettleton	**	**

4-Year Graduation Rates

Division of Research and Development
J.P. Beaudoin, Ed.D., Chief

April 2016

District Name	N-Count*	4-Year Graduation Rate for Students with Disabilities
New Albany	16	25.2%
Newton City	**	**
Newton County	11	44.0%
North Bolivar	**	**
North Panola	11	9.1%
North Pike	**	**
North Tippah	**	**
Noxubee County	15	26.7%
Oakley Youth Development Center	**	**
Ocean Springs	25	49.3%
Okolona Separate	**	**
Oktibbeha County	10	20.8%
Oxford	20	39.5%
Pascagoula	50	33.5%
Pass Christian	**	**
Pearl	26	30.3%
Pearl River	24	28.3%
Perry County	**	**
Petal	36	58.4%
Philadelphia	**	**
Picayune	22	32.3%
Pontotoc City	**	**
Pontotoc County	18	43.4%
Poplarville	**	**
Prentiss County	12	44.8%
Quitman	11	17.3%
Quitman County	14	27.0%
Rankin County	82	31.6%
Richton	**	**
Roger Amos McMurtry	**	**
Scott County	21	28.3%
Senatobia	12	26.0%
Shaw	**	**

4-Year Graduation Rates

Division of Research and Development
J.P. Beaudoin, Ed.D., Chief

April 2016

District Name	N-Count*	4-Year Graduation Rate for Students with Disabilities
Simpson County	29	13.6%
Smith County	25	28.2%
South Delta	10	29.3%
South Panola	27	25.8%
South Pike	**	**
South Tippah	13	30.5%
Starkville	16	33.0%
Stone County	21	23.7%
Stovall SPED Complex	**	**
Sunflower County	14	6.2%
Tate County	15	13.4%
Tishomingo County	18	16.3%
Tunica County	**	**
Tupelo	58	33.8%
Union City	**	**
Union County	**	**
Vicksburg-Warren	64	11.4%
Walthall County	15	5.0%
Water Valley	**	**
Wayne County	24	5.0%
Webster County	10	41.0%
West Bolivar	**	**
West Jasper	**	**
West Point	15	20.1%
West Tallahatchie	**	**
Western Line	11	38.8%
Wilkinson County	**	**
Winona	**	**
Yazoo City	13	7.5%
Yazoo County	12	16.0%
State of Mississippi	2960	27.5%

*N-Counts are rounded to the nearest whole number

**Indicates the district did not meet the minimum n-count for the calculation of the graduation rate.

Rates below 5% are reported as 5%.

Division of Research and Development

Attachment 6: 2015 District Graduation Rates for Students with Disabilities Sorted by Dist.

April 18, 2016



4-Year Graduation Rates

Division of Research and Development
J.P. Beaudoin, Ed.D., Chief

April 2016

Attachment 7:

2015 District Graduation Rates for Students with Disabilities Sorted by Percentage (PCT)

- Note that ranking does not include suppressed data.

4-Year Graduation Rates

Division of Research and Development
J.P. Beaudoin, Ed.D., Chief

April 2016

District Name	N-Count*	4-Year Graduation Rate for Students with Disabilities
Forrest AHS	14	63.3%
Bay St. Louis	16	60.3%
Lamar County	56	58.4%
Petal	36	58.4%
Itawamba County	22	58.1%
Hancock County	27	52.8%
Clinton	23	52.4%
DeSoto County	206	50.1%
Madison	46	49.8%
Ocean Springs	25	49.3%
Prentiss County	12	44.8%
Newton County	11	44.0%
Pontotoc County	18	43.4%
Corinth	14	43.3%
George County	12	42.6%
Leflore County	16	41.4%
Webster County	10	41.0%
Lincoln County	15	40.3%
Long Beach	19	39.6%
Lafayette County	20	39.5%
Oxford	20	39.5%
Lowndes County	17	39.3%
Western Line	11	38.8%
Laurel	11	38.5%
Franklin County	10	38.5%
Brookhaven	14	37.1%
Aberdeen	14	35.1%
Tupelo	58	33.8%
Pascagoula	50	33.5%
Monroe County	15	33.3%
Starkville	16	33.0%
Calhoun County	18	32.7%
Picayune	22	32.3%
Lauderdale County	32	32.0%

4-Year Graduation Rates

Division of Research and Development
J.P. Beaudoin, Ed.D., Chief

April 2016

District Name	N-Count*	4-Year Graduation Rate for Students with Disabilities
Rankin County	82	31.6%
Gulfport	33	30.9%
South Tippah	13	30.5%
Pearl	26	30.3%
South Delta	10	29.3%
Pearl River	24	28.3%
Scott County	21	28.3%
Hattiesburg	48	28.2%
Smith County	25	28.2%
Jackson County	45	27.4%
Quitman County	14	27.0%
Noxubee County	15	26.7%
Lee County	56	26.5%
Senatobia	12	26.0%
South Panola	27	25.8%
New Albany	16	25.2%
Lawrence County	12	25.2%
Jones County	39	24.9%
Stone County	21	23.7%
Louisville	20	23.3%
Meridian	27	22.8%
Moss Point	23	21.8%
McComb	19	21.4%
Biloxi	29	20.9%
Oktibbeha County	10	20.8%
West Point	15	20.1%
Columbus	35	19.4%
Alcorn	26	19.3%
Holmes County	16	18.8%
Marion County	22	18.7%
Jackson Public	211	18.6%
Leake County	11	18.4%
MS School for the Deaf	17	17.8%
Kosciusko	16	17.4%

4-Year Graduation Rates

Division of Research and Development
J.P. Beaudoin, Ed.D., Chief

April 2016

District Name	N-Count*	4-Year Graduation Rate for Students with Disabilities
Quitman	11	17.3%
Harrison County	74	16.6%
Tishomingo County	18	16.3%
Yazoo County	12	16.0%
Hinds County	51	15.4%
Simpson County	29	13.6%
Tate County	15	13.4%
Jefferson Davis	18	12.6%
Vicksburg-Warren	64	11.4%
Houston Separate	11	9.3%
North Panola	11	9.1%
Natchez-Adams	27	7.5%
Greenwood	13	7.5%
Yazoo City	13	7.5%
East Jasper	14	7.1%
Sunflower County	14	6.2%
Greenville	53	5.3%
Grenada	24	5.0%
Wayne County	24	5.0%
Covington County	29	5.0%
Marshall County	19	5.0%
Walthall County	15	5.0%
Canton	31	5.0%
Cleveland	17	5.0%
Perry County	**	**
Nettleton	**	**
Amory	**	**
Tunica County	**	**
Benton County	**	**
Wilkinson County	**	**
Union County	**	**
Claiborne County	**	**
Newton City	**	**
Leland	**	**

4-Year Graduation Rates

Division of Research and Development
J.P. Beaudoin, Ed.D., Chief

April 2016

District Name	N-Count*	4-Year Graduation Rate for Students with Disabilities
Jefferson County	**	**
Poplarville	**	**
Pass Christian	**	**
Carroll County	**	**
Coahoma County	**	**
Kemper County	**	**
Humphreys County	**	**
West Bolivar	**	**
Winona	**	**
Forrest County	**	**
North Pike	**	**
Attala County	**	**
Greene County	**	**
Indianola	**	**
West Jasper	**	**
Choctaw County	**	**
Clarksdale	**	**
Copiah County	**	**
Lumberton	**	**
North Tippah	**	**
Hazlehurst City	**	**
Okolona Separate	**	**
Philadelphia	**	**
Columbia	**	**
Durant	**	**
Enterprise	**	**
Neshoba County	**	**
Union City	**	**
Coffeeville	**	**
Booneville	**	**
Forest City	**	**
East Tallahatchie	**	**
North Bolivar	**	**
Chickasaw County	**	**

4-Year Graduation Rates

Division of Research and Development
J.P. Beaudoin, Ed.D., Chief

April 2016

District Name	N-Count*	4-Year Graduation Rate for Students with Disabilities
Pontotoc City	**	**
Holly Springs	**	**
Mound Bayou	**	**
West Tallahatchie	**	**
Amite County	**	**
Water Valley	**	**
Hollandale	**	**
Montgomery County	**	**
Richton	**	**
Shaw	**	**
Baldwyn	**	**
South Pike	**	**
Benoit	**	**
Coahoma AHS	**	**
Hinds AHS	**	**
Roger Amos McMurtry	**	**
Oakley Youth Development Center	**	**
Stovall SPED Complex	**	**
MS School for the Blind	**	**
Hudspeth Center	**	**
Magnolia Grove	**	**
Ellisville State School	**	**
MS State Hospital	**	**
MS School for Math and Science	**	**
MS School for the Arts	**	**
Drew	**	**
<i>State of Mississippi</i>	<i>2960</i>	<i>27.5%</i>

*N-Counts are rounded to the nearest whole number

**Indicates the district did not meet the minimum n-count for the calculation of the graduation rate.
Rates below 5% are reported as 5%.