

# 2015 Summer Special Education Leadership Institute

Special Education Updates

June 11, 2015

# State Board of Education

---

## Vision

---

To create a world-class educational system that gives students the knowledge and skills to be successful in college and the workforce, and to flourish as parents and citizens

## Mission

---

To provide leadership through the development of policy and accountability systems so that all students are prepared to compete in the global community

# State Board of Education Goals

## 5-Year Strategic Plan for 2016-20

---

- ✓ All Students Proficient and Showing Growth in All Assessed Areas
- ✓ Every Student Graduates High School and is Ready for College and Career
- ✓ Every Child Has Access to a High-Quality Early Childhood Program
- ✓ Every School Has Effective Teachers and Leaders
- ✓ Every Community Effectively Using a World-Class Data System to Improve Student Outcomes

---

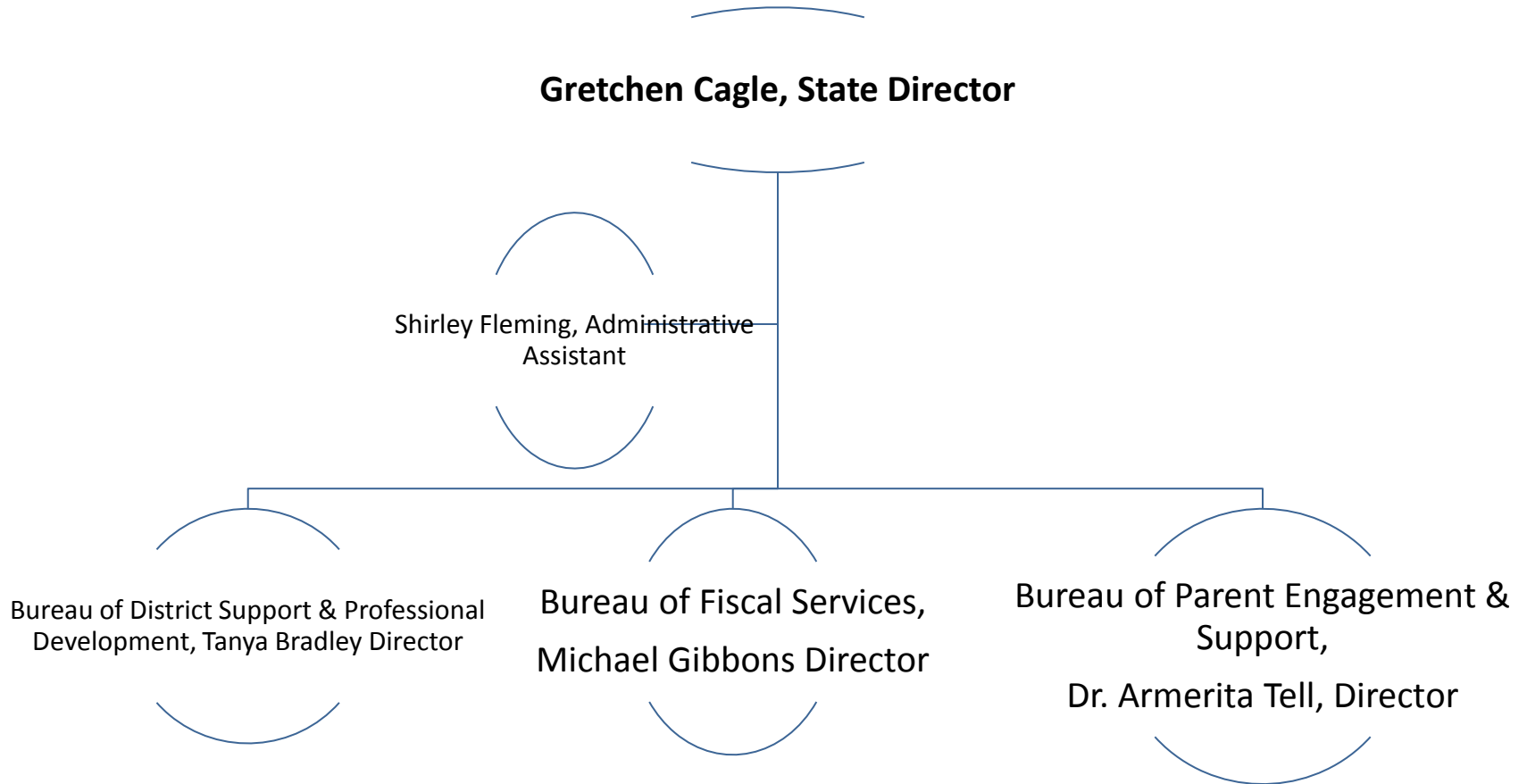
# Organizational Chart

June 11, 2015

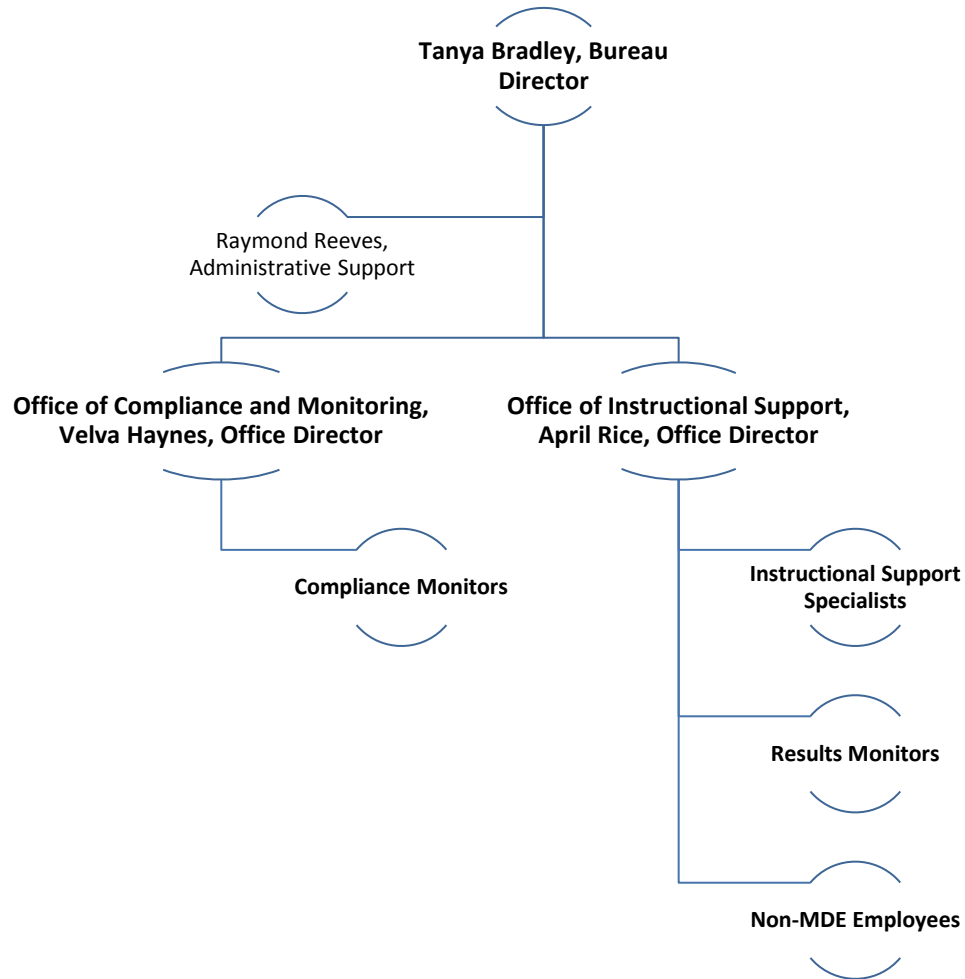


# Organizational Chart

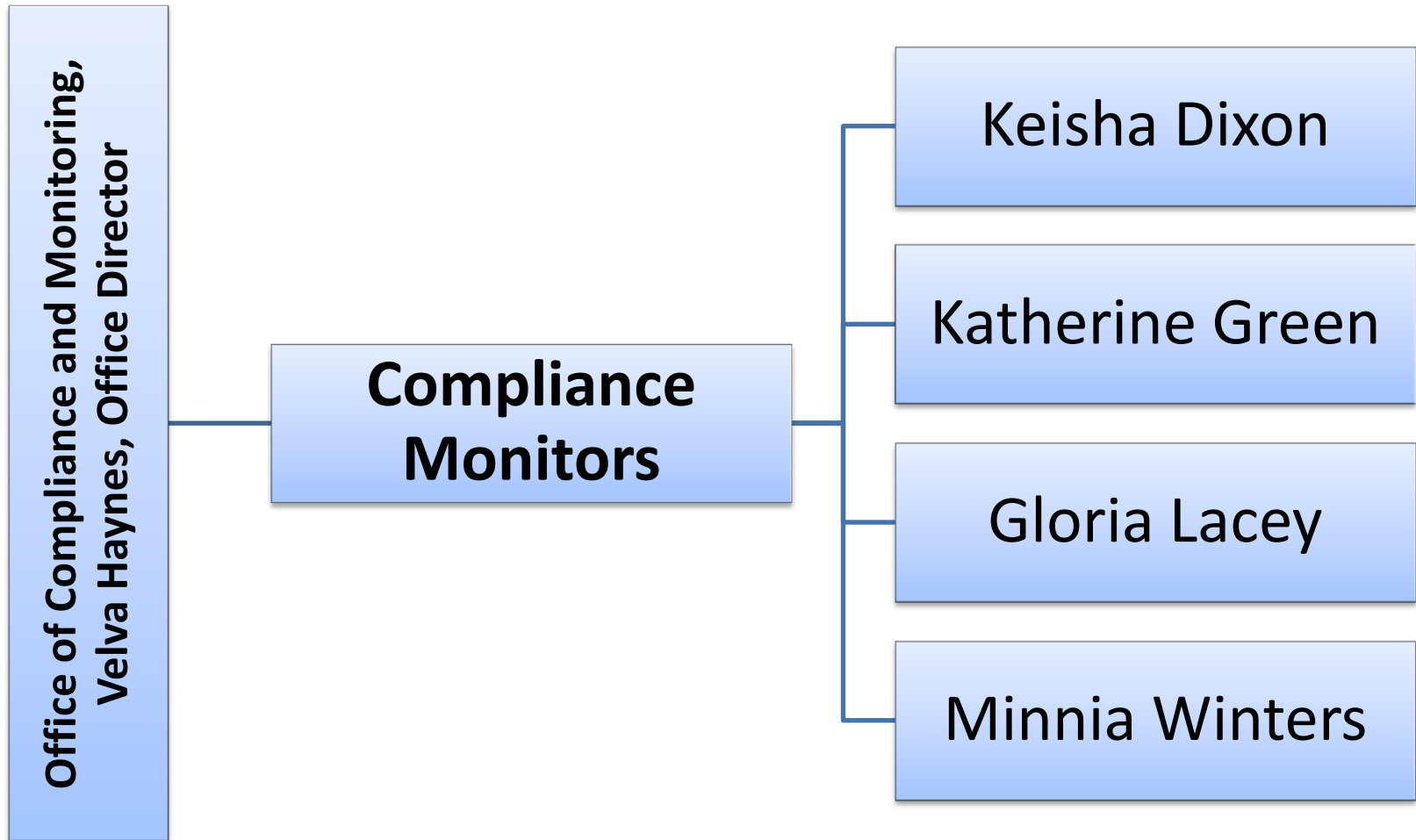
---



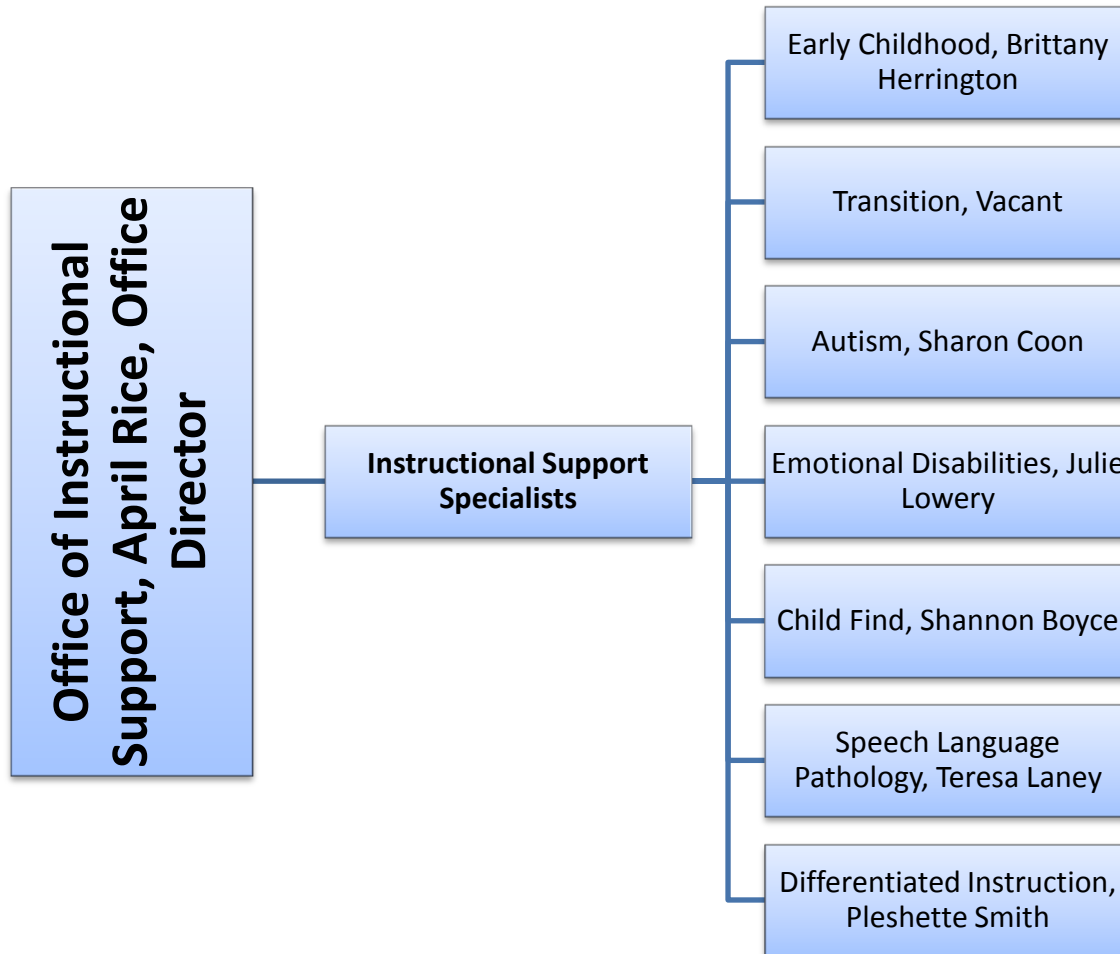
# Organizational Chart



# Organizational Chart

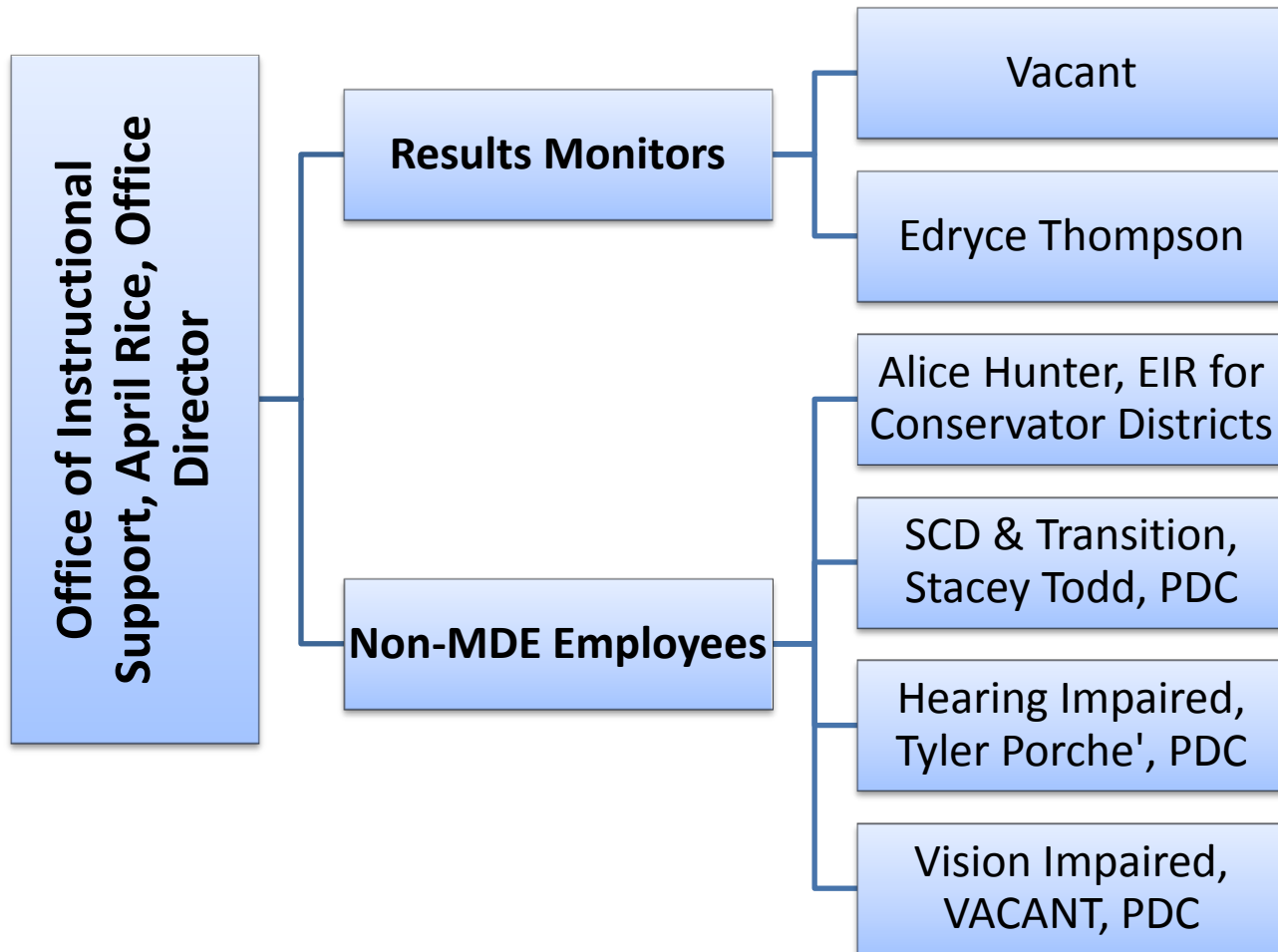


# Organizational Chart



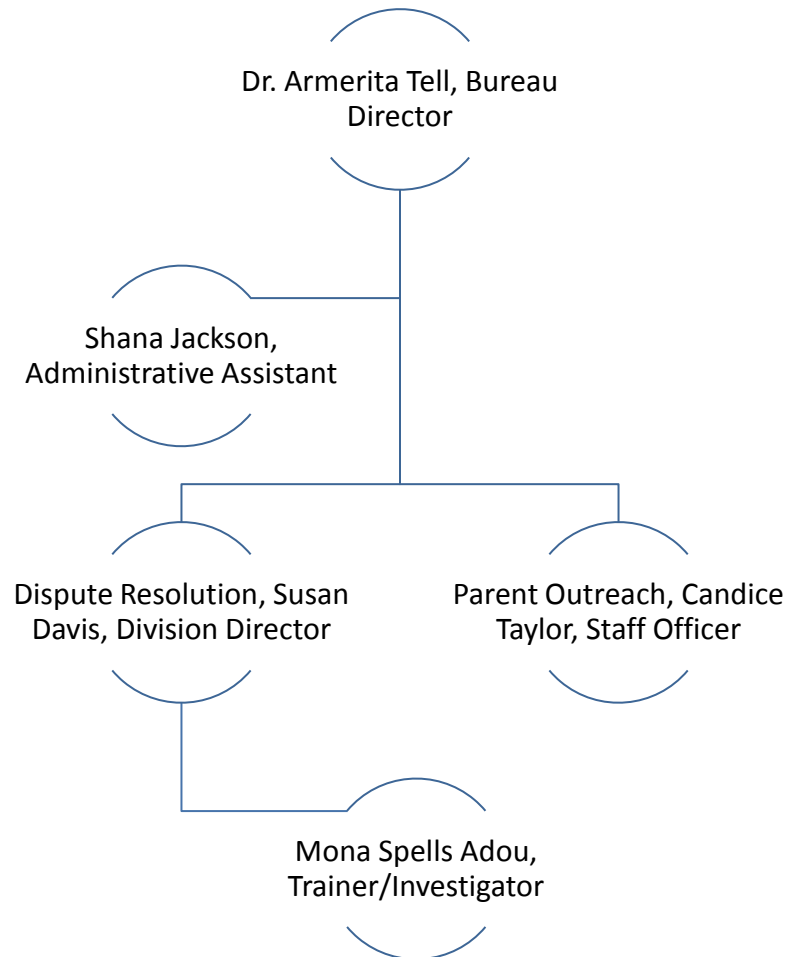


# Organizational Chart

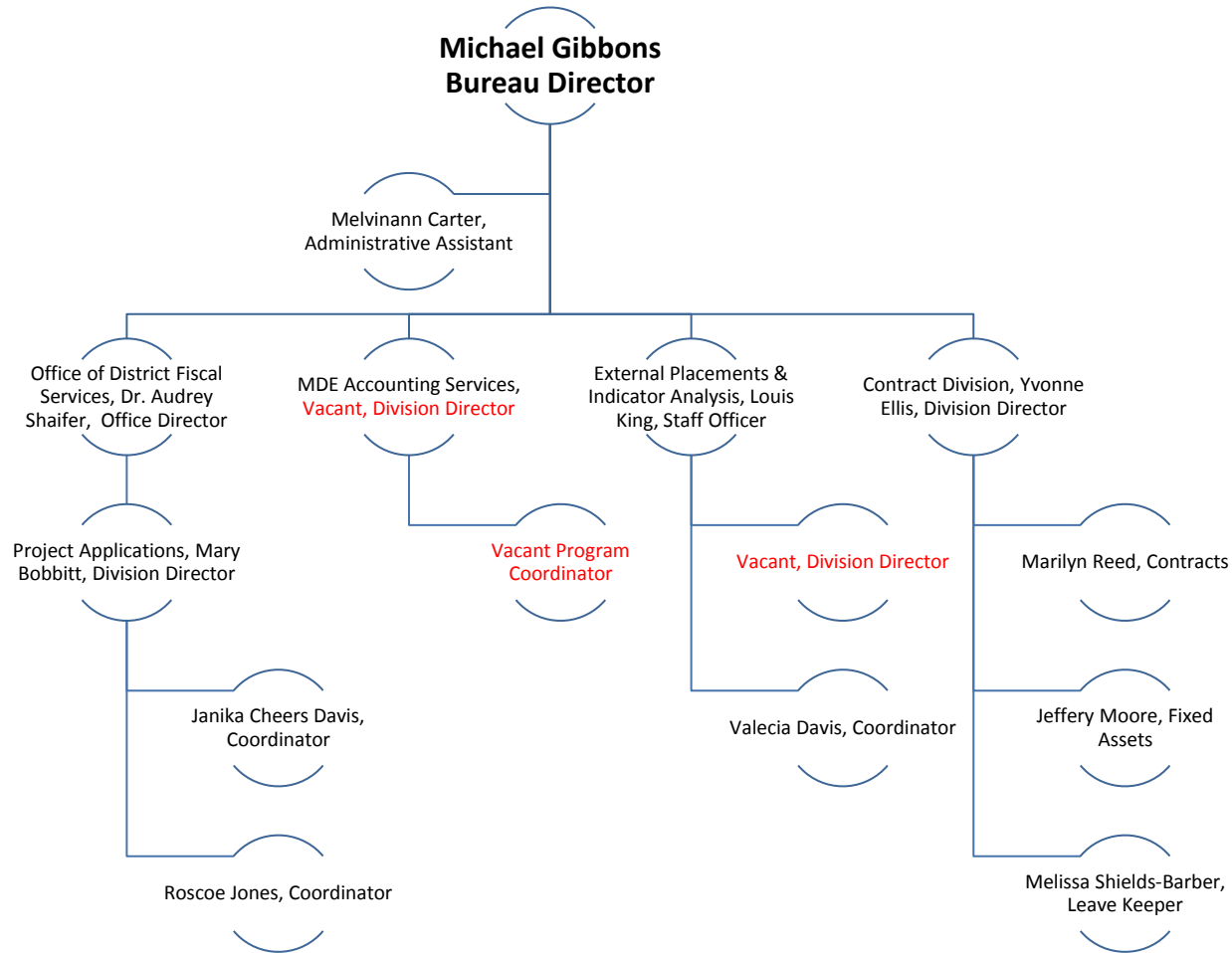


# Organizational Chart

---



# Organizational Chart



---

# Professional Development Coordinators (PDCs)

# Menu of Services

---

- The MDE Office of Professional Development offers professional development through the Regional Educational Service Agencies (RESAs).
- Services are at no cost to the LEA.
- Request must go through the RESA using the Professional Development Request Form.
- There are numerous training opportunities available on the Standards, including Unpacking and Scaffolding the Standards.

# Menu of Services

---

- Transition Planning
- Instructional Strategies for Students with Significant Cognitive Disabilities
- IEP Coaching and Instruction
- Best Instructional Practices for Students with Disabilities
- Technical Assistance for Deaf Education
- Correlating Standards-based IEP with CCRS for Deaf and Hard of Hearing Students
- Determining the Needs for Deaf and Hard of Hearing Students

---

# Procedures

# Procedures

---

- The MDE received numerous public comments regarding the proposed procedures for Child Find.
- The MDE formed a Child Find Task Force to review each comment. The Child Find Task Force is comprised of 21 individuals from across the State.
- The Child Find Task Force met three (3) times and completed the review of the public comments.



# Procedures

---

- The additional volumes received a few public comments and those comments will be reviewed by the Special Education Directors' Workgroup.

---

# Child Find Task Force

June 11, 2015



# Child Find Task Force

---

- The Child Find Task Force made the following changes to the Procedures, based on public comments:
  - Some “must” were changed to “should”
  - If the student is not able to be conditioned for the hearing and screening and Part II of the hearing and screening report is complete, the student must be referred to qualified examiner for further assessment.
  - The Physical Status Report, or a similar form containing the same information, must be used when considering eligibility under the following disability categories: Developmental Delay (DD), Language/Speech Impairment–Voice (L/S-Voice), Orthopedic Impairment (OI), Other Health Impairment (OHI)\*, or Traumatic Brain Injury (TBI).
  - The physical status report should not delay the evaluation process for a student with an eligibility of DD. The committee must document attempts to obtain the report and utilize the preponderance of data to determine eligibility. If the physical status report is available after eligibility, the committee must reconvene to consider the data.

# Child Find Task Force

---

- The Child Find Task Force is now researching other States to develop a best practice guide for determining eligibility through the RtI process for students eligible for Specific Learning Disability.

---

# Professional Development Calendar

June 11, 2015



# Professional Development Calendar

---

- The OSE is in process of completing a Professional Development Calendar for the 2015-2016 school year.
- The Professional Development Calendar will be posted on the MDE website.

# SAVE THE DATE

---

- Upcoming (**tentatively**) scheduled trainings:
  - Special Education Director’s Quarterly Meetings
    - September 16, 2015
    - January 20, 2016
    - April 11, 2016
  - New Special Education Director’s Meetings (1-3 years)
    - July 26, 2015
    - October 20, 2015
    - March 29, 2016

---

# Teacher Listserv

June 11, 2015





# Teacher Listserv

---

- The OSE now has a teacher listserv available for special education teachers.
- The purpose of the listserv will be to inform special education teachers of upcoming trainings, upcoming webinars, and other resources provided by MDE.
- Please encourage your special education teachers to go the OSE homepage to sign up!!

# Teacher Listserv

The screenshot shows the Mississippi Department of Education (MDE) website. The header includes the MDE logo and tagline "Ensuring a bright future for every child". Navigation tabs include "PARENTS", "STUDENTS", "EDUCATORS", and "DISTRICTS". A red navigation bar contains links for "Home", "About MDE", "News & Media", "MS Schools", "Reports", "Public Notices", "Careers", and "Contact Us".

The main content area is titled "Special Education" and features a photograph of a teacher interacting with students. Below the photo, the text reads: "The Office of Special Education is a service-oriented organization that seeks to improve the education experience for children with disabilities. We strive to nurture a dedicated staff through intense professional development opportunities, field experience, and individual accountability. In keeping with the Individuals with Disabilities Education Act and state law, we help local schools and districts provide effective educational programs to students with disabilities, ages 3-20, who need special education and related services."

On the right side of the page, there are two sections: "Resources for Parents" and "Resources for Teachers". A large red arrow points to the "Resources for Teachers" link, which states: "For the latest updates, articles and other information related to special education and teaching, please click here to sign up for Special Education Teachers email list."

The footer of the page includes the MDE logo and tagline, and the date "6/9/2015".

---

# Today's Sessions

June 11, 2015

# Today's Sessions

---

- Completing Your First Project Application
- Kindergarten Readiness Assessment
- Social Inclusion for All- A Unified Approach with Special Olympics
- Graduation Options
- iCAP and Transition Planning
- Meeting the Needs of Students with Hearing Impairments

# Today's Sessions

---

- Understanding the State-Systemic Improvement Plan and Application
- Cyclical Monitoring- Year 1
- Cyclical Monitoring- Year 2
- Good Cause Exemption: What do you do with Students Promoted or Retained?

# Contact Information

---

**Ms. Gretchen Cagle, State Director**

[Gcagle@mde.k12.ms.us](mailto:Gcagle@mde.k12.ms.us)

Office of Special Education

601-359-3498

# Contact Information

---

**Mr. Michael Gibbons, Bureau Director**

[Mgibbons@mde.k12.ms.us](mailto:Mgibbons@mde.k12.ms.us)

**Dr. Audrey Shaifer, Office Director**

[ashaifer@mde.k12.ms.us](mailto:ashaifer@mde.k12.ms.us)

**Ms. Mary Bobbitt, Division Director**

[mbobbitt@mde.k12.ms.us](mailto:mbobbitt@mde.k12.ms.us)

**Mr. Louis King, Staff Officer**

[lking@mde.k12.ms.us](mailto:lking@mde.k12.ms.us)

Office of Special Education  
Bureau of Data and Fiscal Management  
(601) 359-3498

# Contact Information

---

**Dr. Armerita Tell, Bureau Director**

[ATell@mde.k12.ms.us](mailto:ATell@mde.k12.ms.us)

**Ms. Susan Davis, Division Director**

[SDavis@mde.k12.ms.us](mailto:SDavis@mde.k12.ms.us)

Office of Special Education  
Bureau of Special Projects  
Parent Outreach Division  
(601) 359-3498



# Contact Information

---

**Ms. Tanya Bradley, Bureau Director**

[TBradley@mde.k12.ms.us](mailto:TBradley@mde.k12.ms.us)

**Ms. Velva Haynes, Office Director**

[VHaynes@mde.k12.ms.us](mailto:VHaynes@mde.k12.ms.us)

**Ms. April Rice, Office Director**

[Marice@mde.k12.ms.us](mailto:Marice@mde.k12.ms.us)

Office of Special Education  
Bureau of District Support  
(601) 359-3498