

Amplify.

Data Driven Coaching

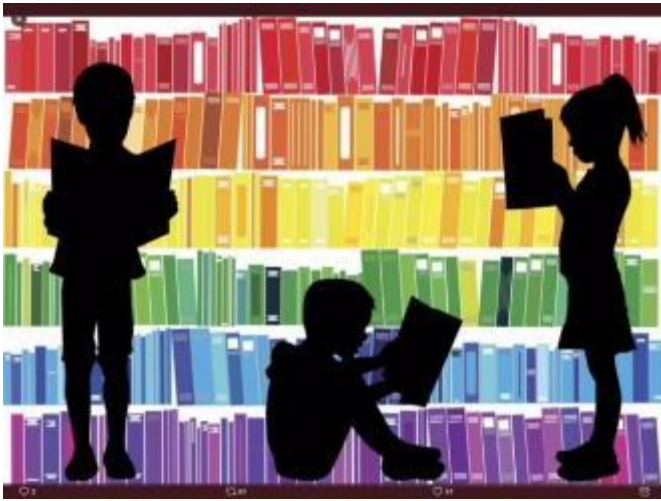
July 2018

Dr. Carolyn McGehee
Data Coach

Context

- In 2014, the Legislature established S.B. 2572 to provide data-driven professional development and to improve student outcomes
- MDE selected Amplify through a competitive process to provide an intensive Data Coaching program for seven schools, grades K-12, in partnership with the University of Mississippi



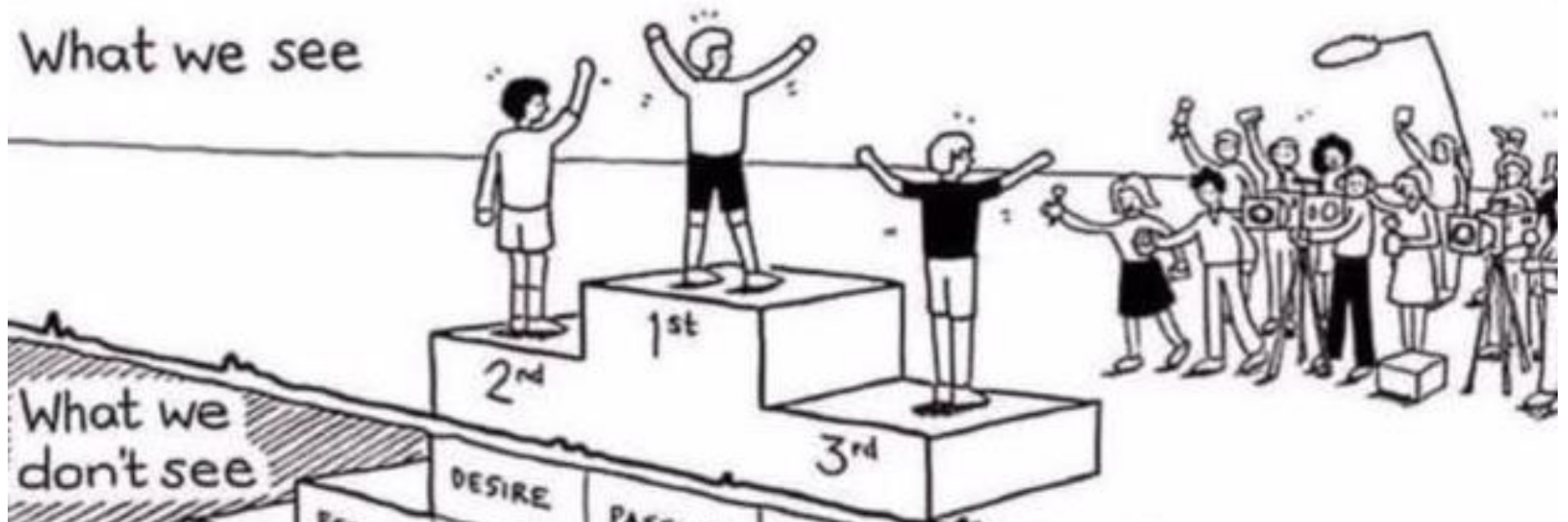


The Challenge

The Legislature established three key metrics to measure significant gains in student achievement:

- **The percentage of students who leave third grade reading on grade level**
- **Reducing the dropout rate**
- **Proficiency on the assessments for state standards**

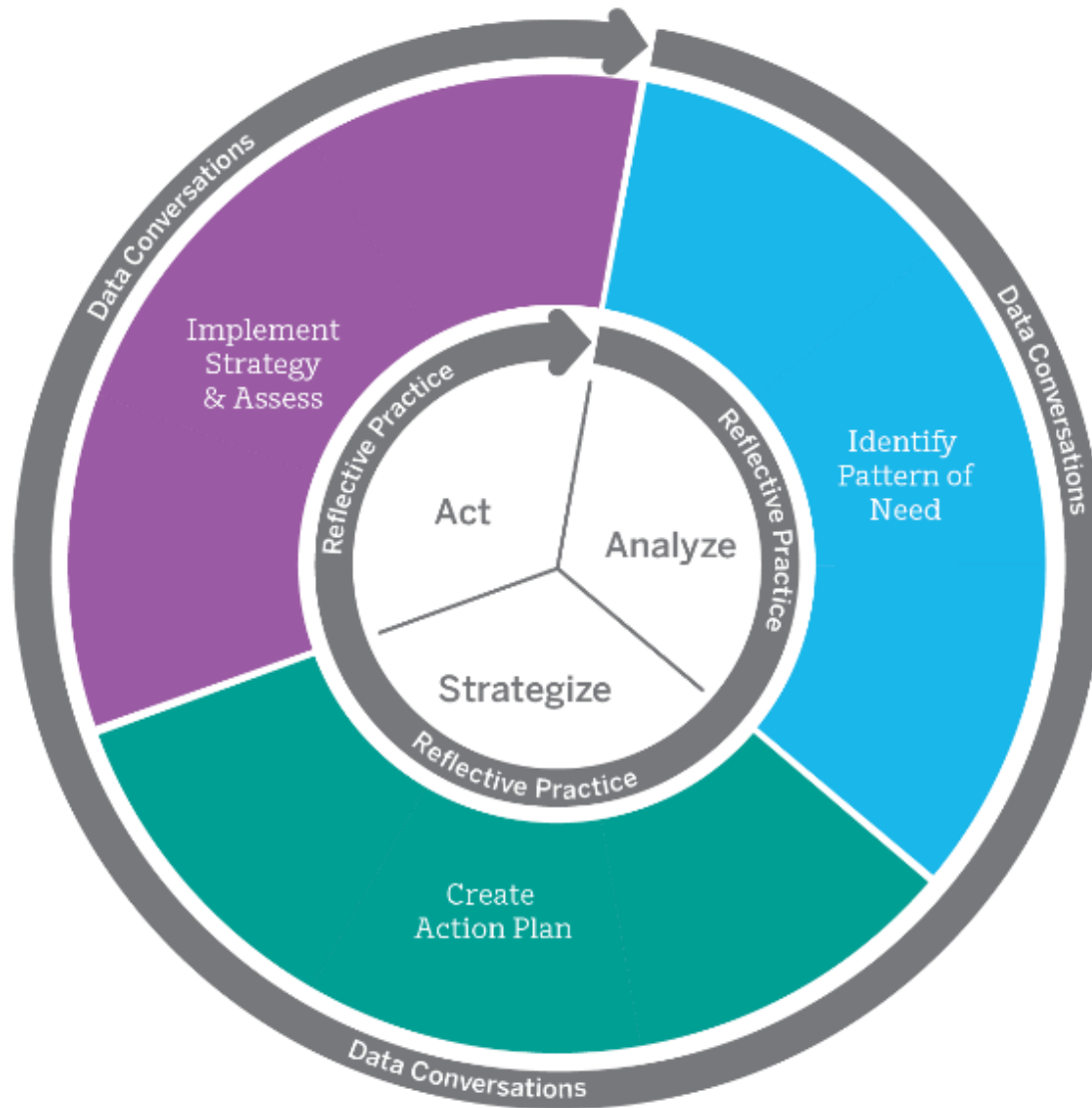
What we see



What we don't see



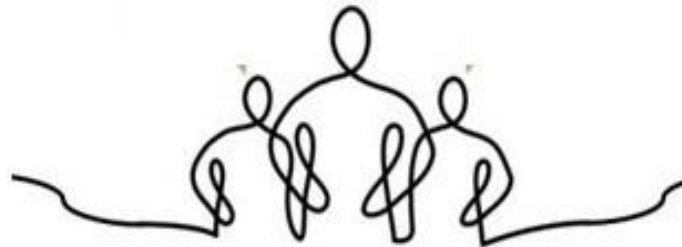
Taking Action With Data Framework



The Solution

Highly trained Coaches that help teachers develop these skills.

- **To develop technical skills to interpret student data**
- **To build pedagogical skills to differentiate instruction**
- **To foster greater collaboration among educators**



Customize Action Plans

Reactive

Proactive



Observing and debriefing a classroom or PLC

Analyzing a participant's practice or an exemplar via video

Giving written lesson plan feedback

Facilitating a PLC

Modeling a lesson/ PLC for a participant

Having the participant rehearse, with in-the-moment feedback

Co-planning

Data meeting (reviewing data and setting next steps)

Data Coaching Road Map

STRATEGIC CALENDARING				
School site	Monday	Tuesday	Wednesday	Thursday
8:00				
8:15	5th and 6th Grade PLC			
8:30		SIG Grant	PLC - Math Department	Classroom Observations
9:00			Weekly Data	TBD
9:15	Observations K-2			White, A Smith, Murchie
9:30	TBD as to who is being used as			
9:45	proctors for MAP Writing Test	Third Grade PLC	Period 2.5 Observation	Period 2.5 Observation
10:00		Feedback on Writing Test		
10:15	Dowds, Bourgeois, Shelton			
10:30			A Brooks	Mr. Covington, Principal
10:45	Literacy Coach - Data Review		EOY Planning for next year	EOY Planning
11:00	Elementary Principal	SIG Grant continued		
11:15			PLC - Science Department	Changed to District Office
11:30			Weekly Data	
11:45				
12:00				
12:15				
12:30		K-2 PLC		PLC History Department
12:45				Weekly Data
1:00			Johnnie Wells - District Planning	
1:15			Dr. Peggy Liddell	
1:30				
1:45		Observations - 6th ELA	SIG Grant Planning - Data Review	PLC English Department
2:00		Observation - 4th ELA		Weekly Data
2:15		Observations - 5th ELA		
2:30		Feedback on Writing Assessment		
2:45				
3:00				

WHY

IF YOUR

PLAN

**ISN'T WORKING
CHANGE THE PLAN
NEVER THE**

GOAL

Goals for 2017-2018 School Year MAP Assessment

Cut Scores for 2017-2018

A rated 442-700 points
 B rated 377-441 points
 C rated 328-376 points
 D rated 269-327 points
 F rated less than 269

School – goal 293
 D rated -

Point Opportunities at Elementary Grades 3-6

Reading	Math	Other Subjects
Proficiency 100 points 17%	Proficiency 100 points 20%	Science Proficiency 100 points 50%
Growth All 100 points 48%	Growth All 100 points 45%	
Growth Low 100 points 38%	Growth Low 100 points 75%	

Levers for Success

Instruction

Data-Driven Instruction

Observation/Feedback

Planning

Professional Development

Culture

Student Culture

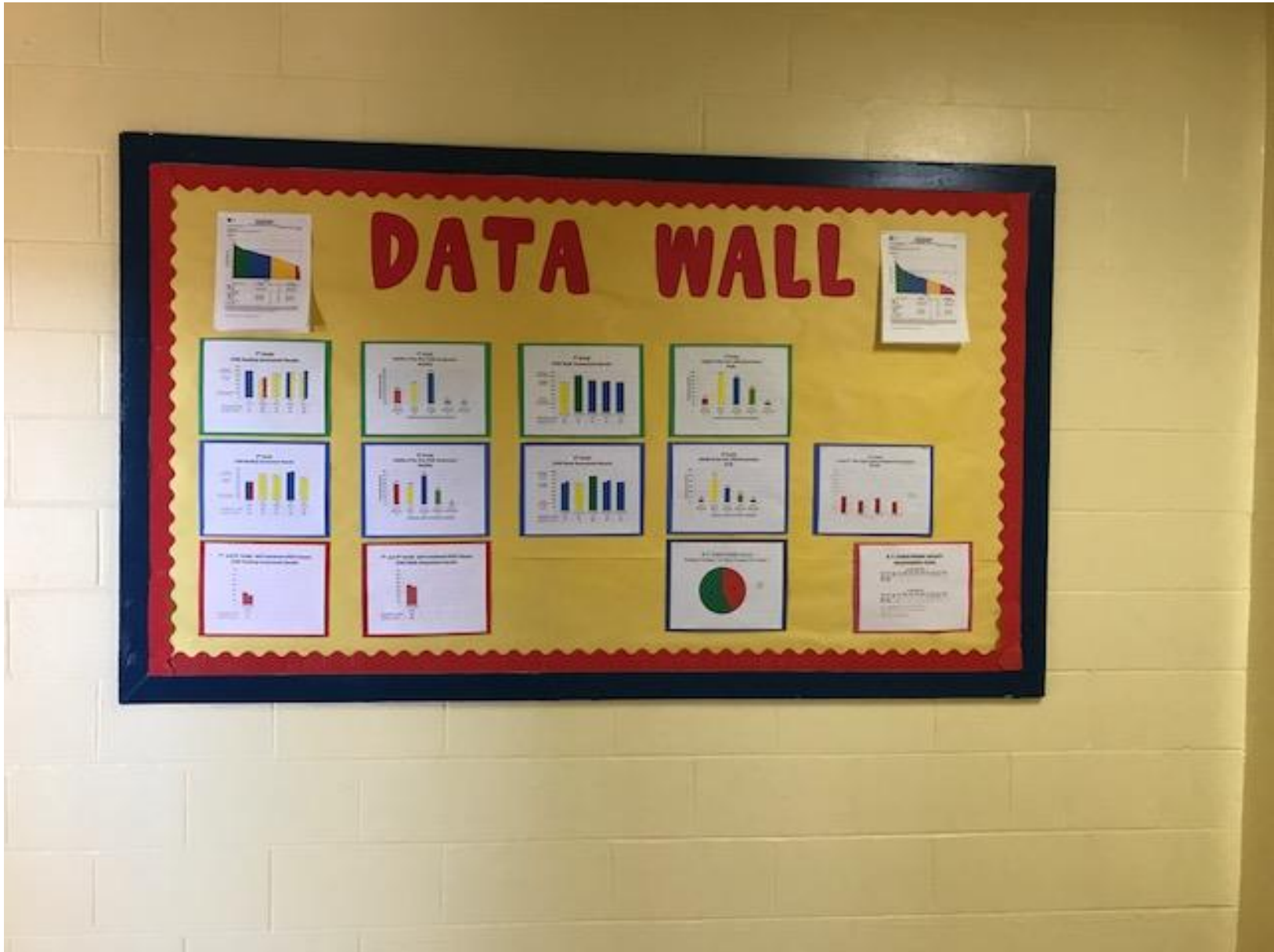
Staff Culture

Measurable Goals NCHS

1. Formative assessment given and analyzed 3 x 9 weeks.
2. Summative assessment given and analyzed 1 x 9 weeks.
3. Benchmark assessments given and analyzed 3 times a year.
4. 80% of students pass assessments with grade of 75 or better
5. 70% of students reach proficiency (70%) on each assessment type.
6. Assessment results are tracked, visible, and current in the conference room.

7. Student 98% ada
8. Chronic st 50% for th
9. Staff after 98% ada co
10. 80% of tea 5 days or le
11. Suspensions last year.
12. Attendance current in the

13. Each adr and docum walkthrough
14. Each admr assigned tea to discuss Classroom ma
15. PLC and S exceed Lew

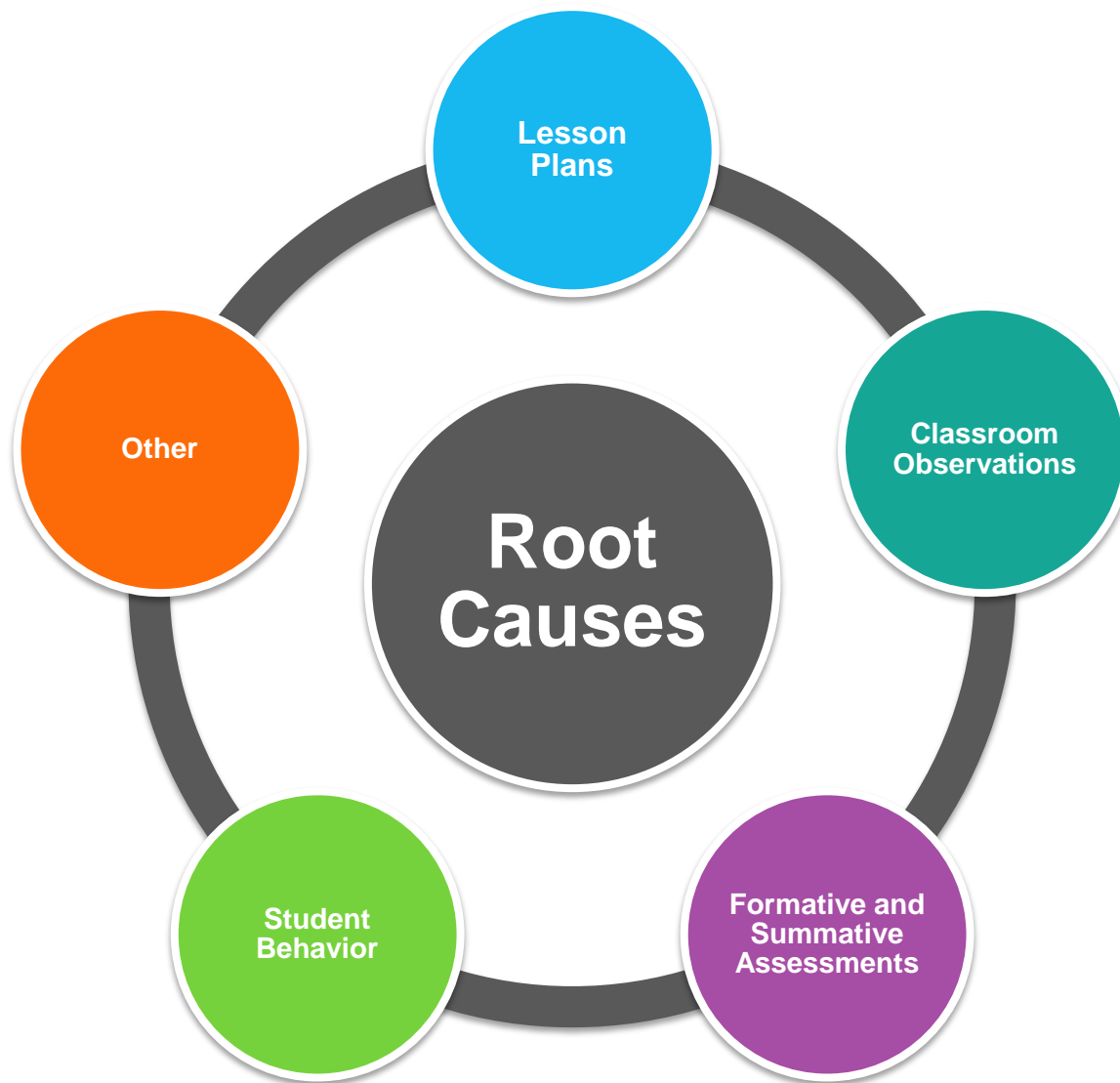


Root Cause

- The **cause** of an event that, if **eliminated**, would **substantially reduce or prevent the event**.
- For higher stakes decisions, **validation is used to determine root cause** in order to address a pattern of need.



Potential Root Causes



Revisit Action Plans

Reactive

Proactive



Observing and debriefing a classroom or PLC

Analyzing a participant's practice or an exemplar via video

Giving written lesson plan feedback

Facilitating a PLC

Modeling a lesson/ PLC for a participant

Having the participant rehearse, with in-the-moment feedback

Co-planning

Data meeting (reviewing data and setting next steps)



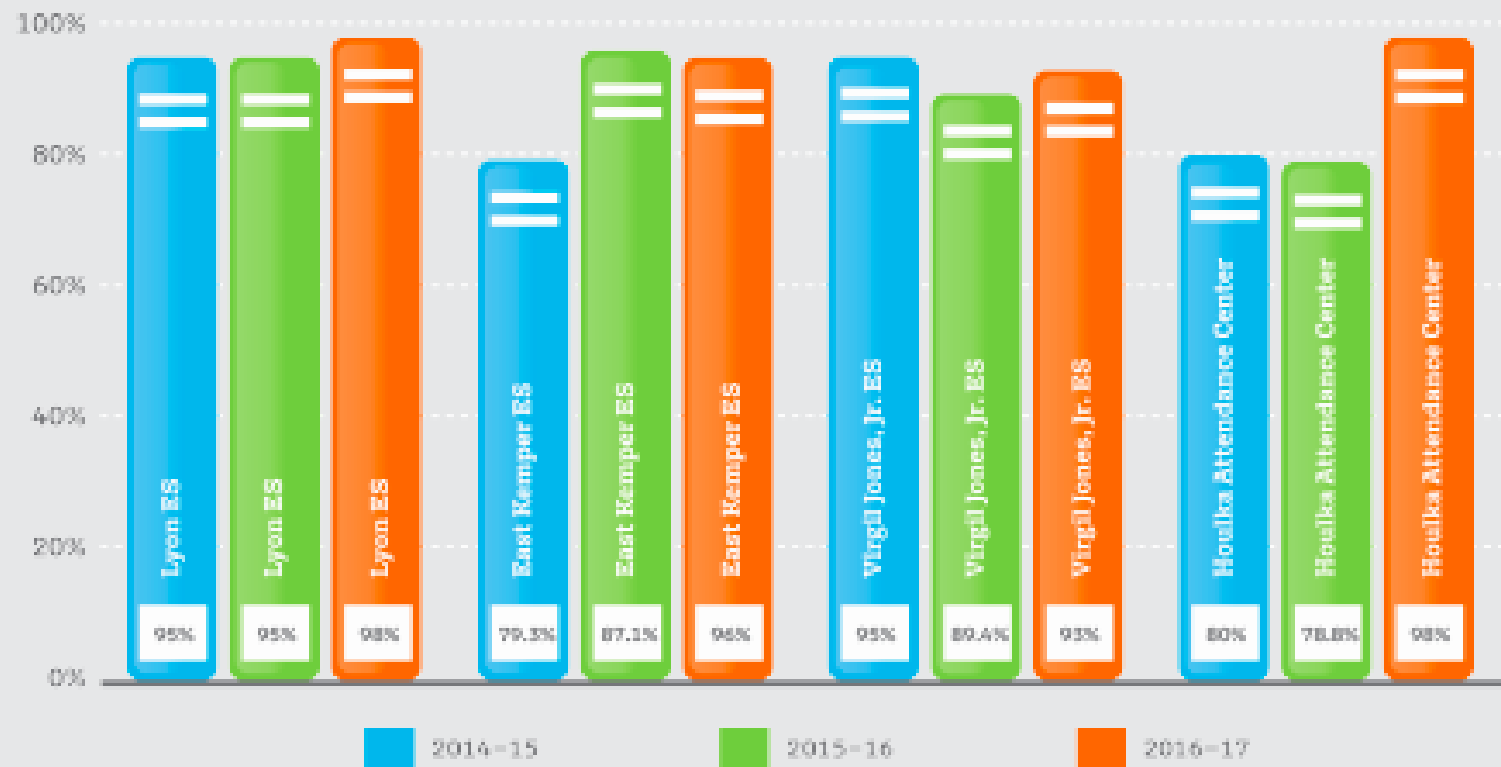


**A culture of
collaboration,
collegiality,
cooperation
and
caring**



Elementary School Gains

Third Grade Reading Scores Gains since 2014–15 School Year



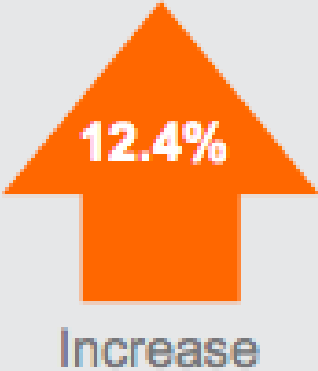
MS Data Coaching Schools

Four-Year Graduation Rates

69%
2014-15



81.7%
2016-17



Data Coaching Program-Wide

Third Grade Reading Assessment Pass Scores

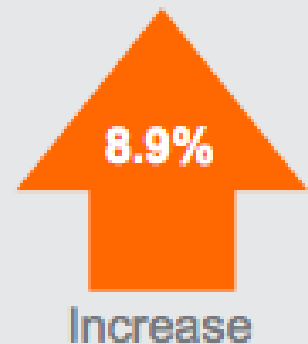
87.32%
2014-15



87.50%
2015-16



96.25%
2016-17



PEANUTS

I wonder
what teachers
make.

A difference
Peppermint Patty, they
make a difference!

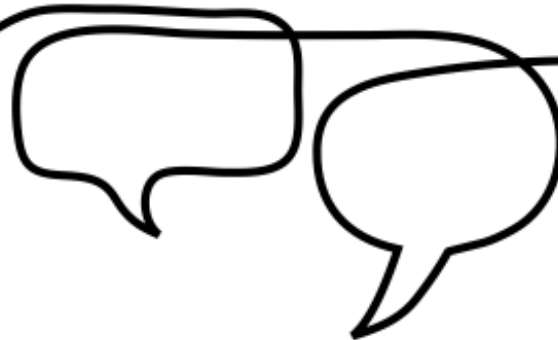
g Memes

14.9k

3.3k Co

Questions

Q & A



Amplify.

Email

cmcgehee@amplify.com

Carolyn McGehee
Data Coach

