

MISSISSIPPI
SUCCEEDS!!

Superintendent's
**ANNUAL
REPORT**

2018 -2019



MISSISSIPPI
DEPARTMENT OF
EDUCATION

36 sheets • **WIDE RULED**



SCAN ME

View financial and other statistical data at mdek12.org/superintendent2019

MISSISSIPPI SUCCEEDS!!





MISSISSIPPI
DEPARTMENT OF
EDUCATION

2018-2019 Superintendent's Annual Report

Carey M. Wright, Ed.D.
State Superintendent of Education

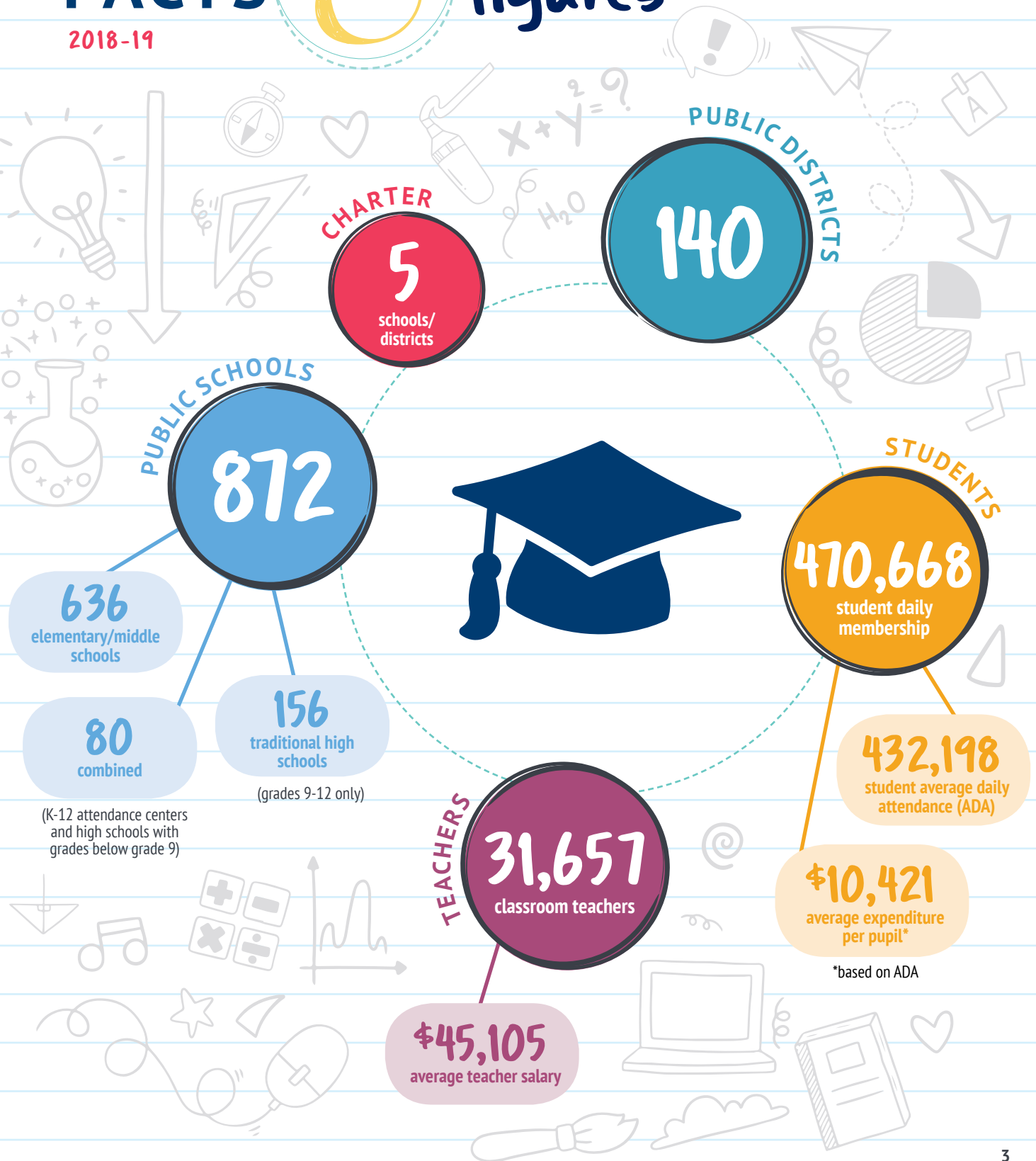
TABLE OF CONTENTS

Facts and Figures	3
Message from the State Superintendent of Education....	4
Mississippi State Board of Education	5
National Achievements	6
Mississippi State Board of Education Strategic Plan	11
 Goal 1 ...	13
Goal 2	17 
<u>Goal 3</u>	23
Goal 4	28 
Goal 5	32 
 Goal 6	34

It Always
SEEMS
Impossible
UNTIL
IT'S DONE

FACTS figures

2018-19



Message from the STATE SUPERINTENDENT OF EDUCATION

Over the last decade, Mississippi has committed to higher expectations, and we are reaping the results. Student achievement is at an all-time high and is continuing to climb. The nation now considers Mississippi a leader in education because our students are making faster progress than nearly every other state. I am incredibly proud of our public schools and am excited to share the story of their historic achievements.



Carey M. Wright, Ed.D.

 STATE SUPERINTENDENT
OF EDUCATION



Mississippi students, teachers
and school leaders have

REWRITTEN

THE STORY OF
PUBLIC EDUCATION

in our state.



Mississippi

STATE BOARD OF EDUCATION

Our vision is for a world-class educational system that gives students the knowledge and skills to be successful in college and the workforce, and to flourish as parents and citizens. We act through policy and the work of the Mississippi Department of Education (MDE), which guides and supports school districts in service to students.



Jason S. Dean, Ph.D., CHAIR
Term expires July 2024
AT-LARGE Representative



Buddy Bailey, VICE-CHAIR
Term expires July 2023
ADMINISTRATOR Representative



Rosemary G. Aultman
Term expires July 2022
AT-LARGE Representative



Karen Elam, Ph.D.
Term expires July 2021
3RD SUPREME COURT DISTRICT Representative



John R. Kelly, Ph.D.
Term expires July 2020
2ND SUPREME COURT DISTRICT Representative



Brittany Rye
Term expires July 2027
TEACHER Representative



Sean Suggs
Term expires July 2026
AT-LARGE Representative



Carey M. Wright, Ed.D.
STATE SUPERINTENDENT OF EDUCATION

Student
REPS!!



Shelby Dean
Term expires April 2020
SENIOR STUDENT Representative



Omar Jamil
Term expires April 2021
JUNIOR STUDENT Representative



NATIONAL ACHIEVEMENTS

Mississippi

LEADS THE NATION

FOR SCORE GAINS ON
NATIONAL ASSESSMENT OF EDUCATIONAL PROGRESS

Mississippi achieved the **No. 1 spot in the nation for gains** on the National Assessment of Educational Progress (NAEP), known as the Nation's Report Card - the largest nationally representative assessment of what America's students know and can do in various subject areas. Mississippi's unprecedented achievements include:

- 4th grade students making the largest score gains from 2017 to 2019 in reading and mathematics,
- 8th grade students outpacing the nation for growth in mathematics, and
- 8th grade reading holding steady.

The Nation's Report Card is the only education measure comparable across states. It validates the changes in student outcomes in Mississippi. In fact, the results show Mississippi is the only state in the nation, and Washington, D.C., is the only jurisdiction to demonstrate **significant increases in three of the four tested areas in 2019**. Nationally, scores for most subjects on this national assessment dropped or remained flat.

For the first time, **Mississippi 4th graders scored higher than the nation's public school average in mathematics and tied the nation in reading**. National education experts have praised these significant improvements, while other state elected officials and education leaders are asking Mississippi's secret to success.

“MISSISSIPPI stands out as one of just two states/jurisdictions that improved in three of the four NAEP grade and subject combinations,” said **Dr. Peggy Carr**, associate commissioner for assessment at the National Center for Education Statistics. “Because of its grade 4 gains, Mississippi’s mathematics and reading scores are the **highest they have ever been** and are now on par with the national public average. **This is meaningful progress for Mississippi.**”

MISSISSIPPI NATIONAL RANKINGS

NAEP Gains

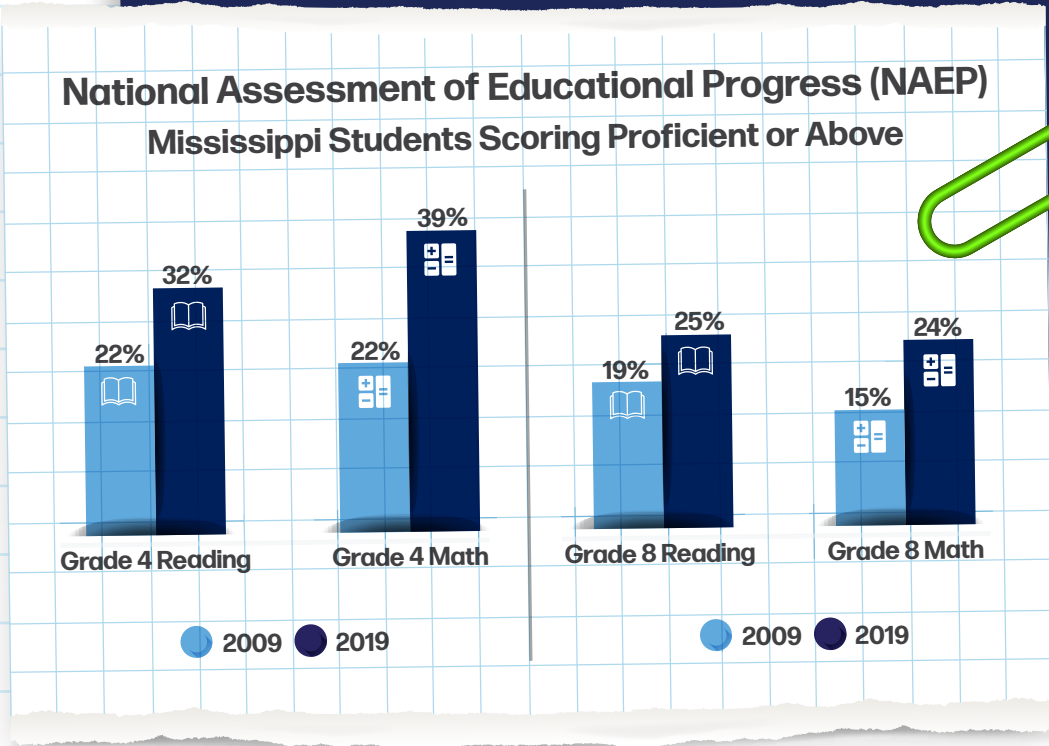
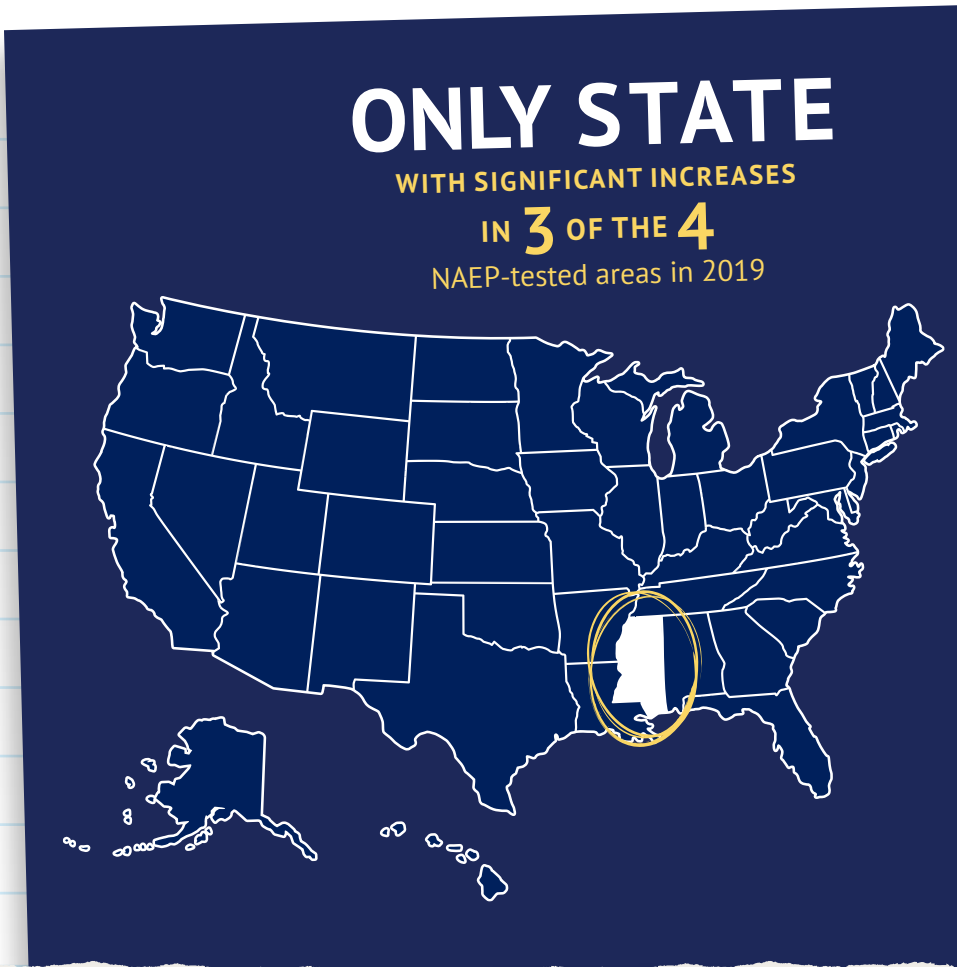


The percentage of Mississippi students scoring proficient or above on NAEP has increased significantly over the past decade, particularly in 4th grade mathematics, where proficiency levels nearly doubled.

The 2019 NAEP scores continue Mississippi's 10-year trend of steady increases, as the nation's scores stagnate. Student achievement accelerated more rapidly since

2013, after the statewide implementation of the Literacy-Based Promotion Act, higher academic standards with aligned assessments, a strong accountability system, and a significant investment in professional development for educators.

The 2019 NAEP results show that Mississippi students living in poverty are outperforming their peers nationally. Black, white and Hispanic students from low-income homes in Mississippi achieved higher scores than the national average in all four NAEP subjects.





Mississippi's Education Chief Selected for NATIONAL LEADERSHIP ROLES

Mississippi's achievements in education have been so significant and sustained that four major national education policy organizations in 2019 selected Mississippi State Superintendent of Education Carey Wright to serve on their leadership boards.

Dr. Wright was named to the National Assessment Governing Board, the board of directors of Chiefs for Change, the steering committee of the Reagan Institute Summit on Education, and to Stanford University's Hoover Educational Success Initiative Practitioners Council.

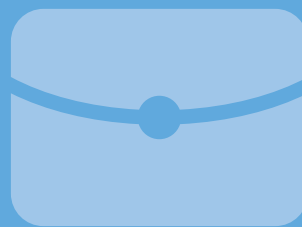
- ▶ **THE NATIONAL ASSESSMENT GOVERNING BOARD** helps set policy for NAEP, which provides objective data on student performance to the public and to education policymakers at the national, state and local levels.
- ▶ **CHIEFS FOR CHANGE** is a bipartisan network of state and district education chiefs dedicated to preparing all students for the future. Members represent 7.3 million students, 454,000 teachers, and 14,000 schools across the nation.
- ▶ **THE REAGAN INSTITUTE SUMMIT ON EDUCATION** is part of the Ronald Reagan Presidential Foundation and Institute and is grounded in the premise that education is a national priority and a state's responsibility.
- ▶ **THE HOOVER EDUCATIONAL SUCCESS INITIATIVE PRACTITIONERS COUNCIL (HESI)** at Stanford University consists of policy leaders from across the United States who ensure that HESI's work is rooted in on-the-ground perspectives and best practices.

Along with her new national leadership roles, Dr. Wright continues to serve on the board and is past president of the Council of Chief State School officers and is an alumnus of the Broad Academy, which is a fellowship program for education leaders who serve at the highest levels of leadership nationwide.



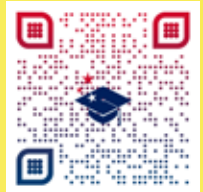
MISSISSIPPI STATE BOARD OF EDUCATION

STRATEGIC PLAN



Mississippi State Board of Education STRATEGIC PLAN







The Mississippi State Board of Education Strategic Plan sets the roadmap for the Mississippi Department of Education and school districts throughout the state to continually improve public education in Mississippi.



SCAN ME

Read the complete Strategic Plan at mdek12.org/MBE

Strategic Plan Goals

- 1 ALL** Students Proficient and Showing Growth in All Assessed Areas 
- 2 EVERY** Student Graduates from High School and is Ready for College and Career 
- 3 EVERY** Child Has Access to a High-Quality Early Childhood Program 
- 4 EVERY** School Has Effective Teachers and Leaders 
- 5 EVERY** Community Effectively Uses a World-Class Data System to Improve Student Outcomes 
- 6 EVERY** School and District is Rated "C" or Higher 

**ALL STUDENTS
PROFICIENT
AND SHOWING
GROWTH IN ALL
ASSESSED AREAS**

GOAL

1

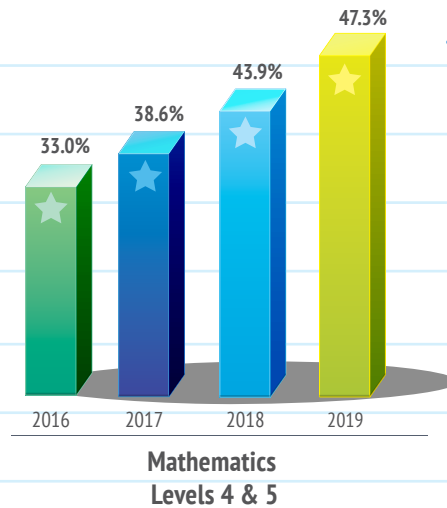
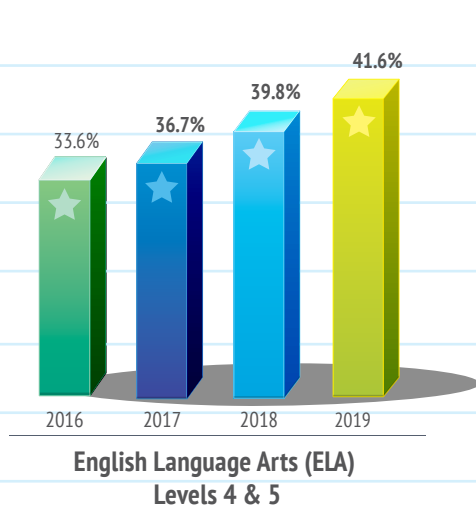
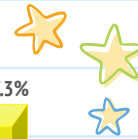
MAAP:

measures student progress in English Language Arts and Mathematics in grades 3 through 8 and in high school

MISSISSIPPI ACADEMIC ASSESSMENT PROGRAM

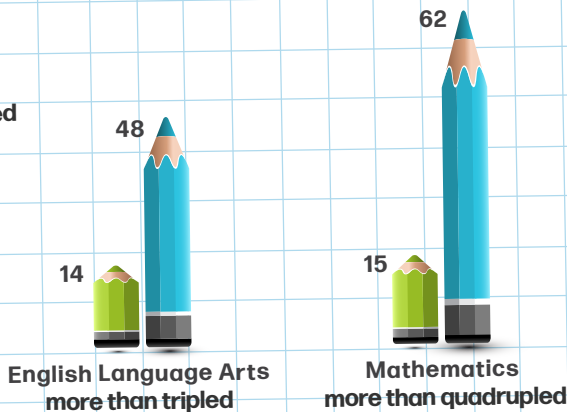
For the fourth consecutive year, students made steady gains on MAAP assessments, which are aligned to the Mississippi College and Career Ready Standards. When Mississippi first administered MAAP tests in 2016, one-third of students scored on or above grade level in English Language Arts and Math. This past school year, closer to half of students reached those levels.

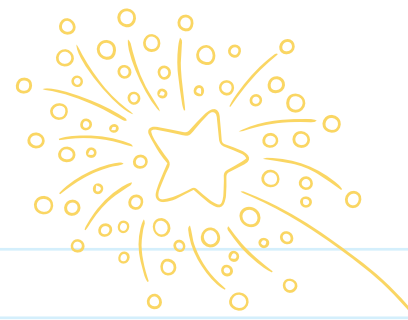
Mississippi Academic Assessment Program (MAAP)



Total districts with more than 45% of students scoring proficient or advanced

● 2016 ● 2019





Statewide MAAP Achievements

ENGLISH LANGUAGE ARTS

GRADE	2017-18 PROFICIENT OR ADVANCED	2018-19 PROFICIENT OR ADVANCED	CHANGE
Grade 3	44.7%	48.3%	+3.6% ▲
Grade 4	45.1%	48.5%	+3.4% ▲
Grade 5	36.2%	43.1%	+6.9% ▲
Grade 6	38.0%	33.6%	-4.4%
Grade 7	34.7%	39.0%	+4.3% ▲
Grade 8	35.1%	35.5%	+0.4% ▲
English II	44.5%	43.8%	-0.7%
Overall	39.8%	41.6%	+1.9% ▲

MATHEMATICS

GRADE	2017-18 PROFICIENT OR ADVANCED	2018-19 PROFICIENT OR ADVANCED	CHANGE
Grade 3	46.0%	51.4%	+5.4% ▲
Grade 4	44.4%	48.8%	+4.4% ▲
Grade 5	33.8%	38.9%	+5.1% ▲
Grade 6	46.4%	47.6%	+1.2% ▲
Grade 7	49.2%	51.1%	+1.9% ▲
Grade 8	41.2%	44.8%	+3.6% ▲
Algebra I	46.6%	49.3%	+2.7% ▲
Overall	43.9%	47.3%	+3.5% ▲



The rigor of MAAP is close to NAEP, which provides a national measure of student learning. MAAP raises the level of expectations for all students and provides parents a better picture of where their children are on their path to college or career.



LITERACY

Literacy skills among students in pre-K through the 3rd grade have steadily improved since Mississippi passed the Literacy-Based Promotion Act in 2013. The legislation takes a comprehensive approach to building the capacity of teachers and school leaders to effectively teach reading and implement a system to monitor student progress. The \$15 million annual appropriation supports ongoing professional development, including the deployment of 80 literacy coaches to help teachers in schools where students struggle the most with reading. At the end of the 3rd grade, students must pass a reading test to prove they are ready for the 4th grade.



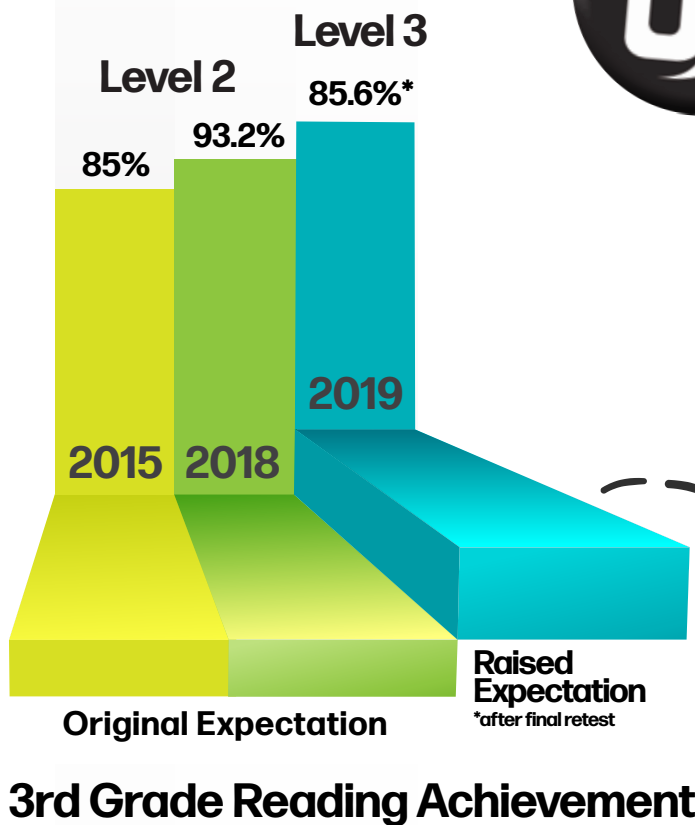
RAISING THE BAR

for 3rd Grade Literacy

Starting in the 2018-19 school year, the law required that the passing score for the 3rd grade reading test be raised to get students closer to demonstrating proficiency. Once expectations were increased, the large majority of 3rd graders passed the 3rd grade reading assessment after the final retest, with

85.6%

of students meeting the highest reading standard ever required under the Literacy-Based Promotion Act.



View 3rd Grade Reading Assessment results at mdek12.org/OPR/Reporting/Assessment/2018-19

EVERY
STUDENT
GRADUATES
FROM HIGH
SCHOOL AND
IS READY FOR
COLLEGE AND
CAREER

GOAL

2

ADVANCED PLACEMENT (AP)

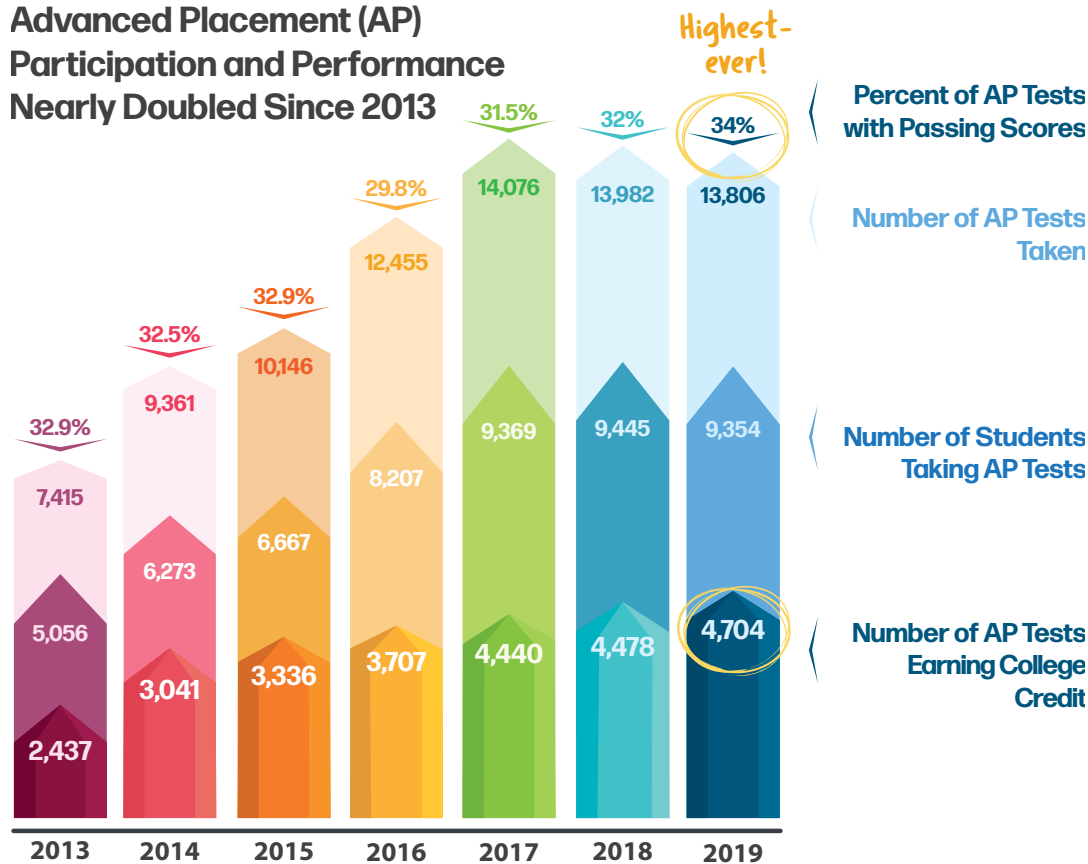
The number of Mississippi students taking AP exams and the number of exams with passing scores have both nearly doubled since 2013.

The MDE implemented an AP Initiative in 2015 to increase statewide access and participation in AP courses. Participation in AP and other advanced courses is a factor in school and districts accountability grades.

Mississippi students achieved an **ALL-TIME HIGH PASS RATE** of **34%** on AP exams in 2019, with **4,704** exams yielding scores that will earn students college credit.

BLACK AND HISPANIC STUDENTS ACHIEVED THE GREATEST GAINS in AP performance from the previous year, with black students achieving a **9.5%** increase and Hispanic students making a **6.4%** increase in passing AP scores.

Advanced Placement (AP) Participation and Performance Nearly Doubled Since 2013

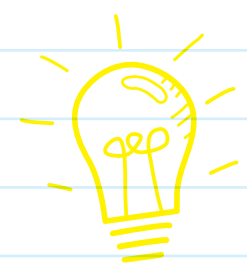


All Mississippi public universities and community colleges now award **three college credits** to students with AP passing scores of 3 or higher and **up to 6 credits** for certain exam subjects with AP scores of 4 or 5. **This reduces the cost of attending a Mississippi university.**



151,000

STUDENTS



39

occupational areas



CAREER AND TECHNICAL EDUCATION

Career and technical course enrollment has risen from 125,680 in 2016 to 151,000 in 2019, an increase of 17%. High school students take courses in 39 distinct occupational areas, which help them develop marketable job skills and earn national industry certifications. Career and Technical Education courses are widely available at more than 500 schools and 15 community and junior colleges in Mississippi.

DUAL CREDIT

Participation in dual credit classes has nearly doubled in the past three years, with the percentage of students enrolled rising from 6.6% in 2016 to 12.6% in 2019. Students who successfully complete dual credit classes earn both high school and college credits for the courses.



500+15


schools
community &
junior colleges

ACT

All Mississippi public school students take the ACT **at no cost** in their junior year of high school. The test measures college-readiness at a crucial time in high school when there is still time to provide interventions to improve ACT performance. **ACT achievement among the graduating class is historically higher than the junior class**, which suggests students improve their scores when they retake the ACT as seniors.



ACT



Achievement among the graduating class is higher than the junior class, which shows students improve scores when they retake the ACT as seniors.



2019 11th GRADE

17.6



2019 GRADUATING CLASS

18.1



SCAN ME

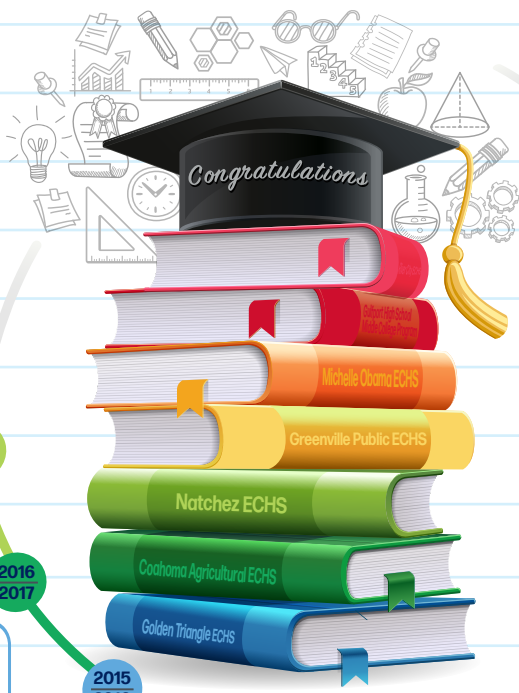
View ACT results at
[mdek12.org/OPR/
Reporting/Assessment/
2018-19](https://mdek12.org/OPR/Reporting/Assessment/2018-19)

All school districts are now required to offer two specialized classes, the Essentials for College Literacy and the Essentials for College Math, to seniors who are on the cusp of meeting the ACT benchmark scores. All students who earn a grade of 80% or higher in these courses are entitled to enter credit-bearing college courses without remediation at all Mississippi public universities and community colleges.

EARLY COLLEGE HIGH SCHOOLS

Early college high schools are small schools located on a partnering college campus where **high school students have the opportunity to earn an associate degree or career credential with their high school diploma**. Middle college is a dual credit/dual enrollment program where students attend school part of the day on a college campus.

Early College High Schools (ECHS)



River City ECHS

- Vicksburg-Warren campus, Hinds Community College
- 2,476 College Credits

Natchez ECHS

- Copiah-Lincoln Community College
- 1,628 College Credits
- 30 High School Graduates
- 15 Associate Degrees

Gulfport High School Middle College Program

- Mississippi Gulf Coast Community College
- 3,154 College Credits
- 33 Associate Degrees (since 2018)

Coahoma Agricultural ECHS

- Coahoma Community College
- 498 College Credits

Michelle Obama ECHS

- Tougaloo College
- 168 College Credits

Golden Triangle ECHS

- Mississippi Department of Education, East Mississippi Community College, and Mississippi State University
- 5,965 College Credits
- 54 High School Graduates
- 38 Associate Degrees

Greenville Public ECHS

- Mississippi Valley University
- 56 College Credits

First Cohort of ECHS Students Graduated in May 2019

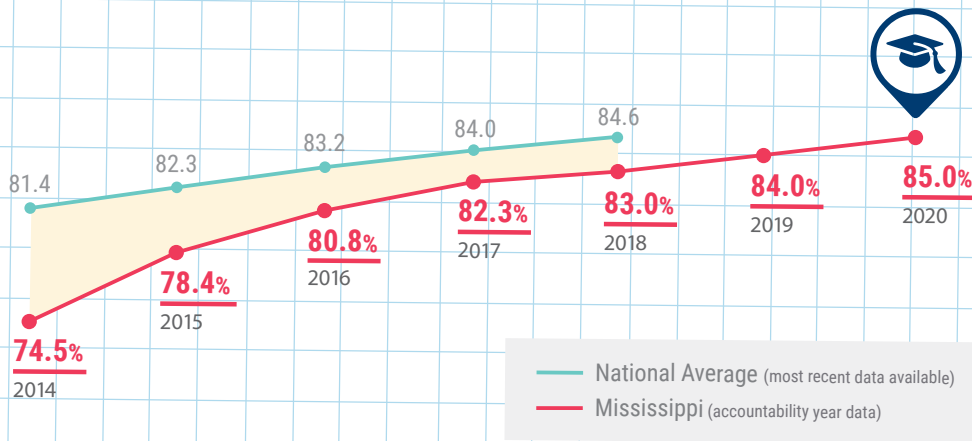
99 High School Graduates

66 Associate Degrees


GRADUATION

Mississippi's graduation rate reached an **all-time high of 85%** in 2020, **surpassing the national rate** of 84.6%.

MISSISSIPPI'S GRADUATION RATE



Diploma Endorsements



Mississippi students can now make their high school diploma more valuable. All 9th graders choose whether they want to work toward a traditional diploma, or take additional classes to earn an **ACADEMIC, DISTINGUISHED ACADEMIC, or CAREER AND TECHNICAL EDUCATION ENDORSEMENT**. Each diploma option prepares students to be successful after graduation, whether that be in the workforce, a career and technical training program, the military, or college.

Students who earn an **ACADEMIC** or **DISTINGUISHED ACADEMIC** diploma endorsement from a public high school automatically qualify for admission into any public university in the state.

**EVERY
CHILD HAS
ACCESS TO A
HIGH-QUALITY
EARLY
CHILDHOOD
PROGRAM**

GOAL

3

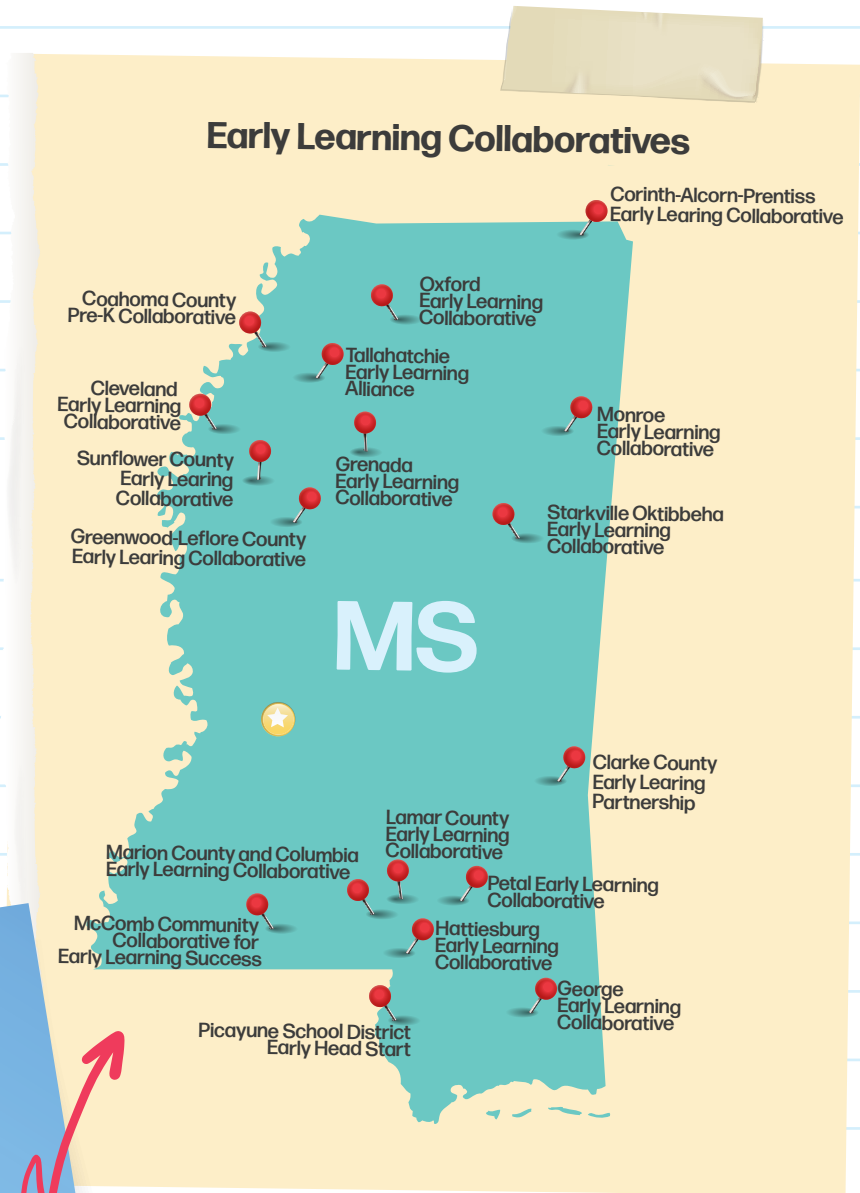
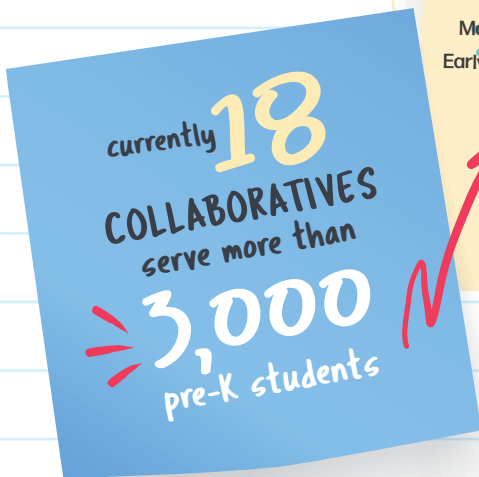
Early Learning Collaborative

PRE-K PROGRAM

Mississippi started building its first publicly funded early childhood education infrastructure in 2013 after the passage of the Early Learning Collaborative Act. The law provided \$3 million in funds to establish a limited number of Early Learning Collaborative (ELC) pre-K programs in underserved areas throughout the state. The collaboratives are partnerships among school districts, Head Start agencies, child care centers, and non-profit organizations.

Based on the immediate results

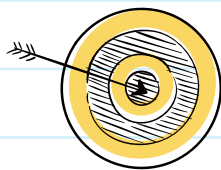
just two years later, the Legislature increased funding to \$4 million in 2016 and to **\$6.5 million** in subsequent years.



EARLY LEARNING COLLABORATIVE ACHIEVEMENTS

1

ELC students achieve higher end-of-year scores than students in all other public pre-K programs. The pre-K exit exam assesses whether students are on track to be ready for kindergarten. **The target end-of-year score for pre-K is 498.**



2019 Average End-of-Year Score

EARLY LEARNING COLLABORATIVE



OTHER PUBLIC PRE-K PROGRAMS

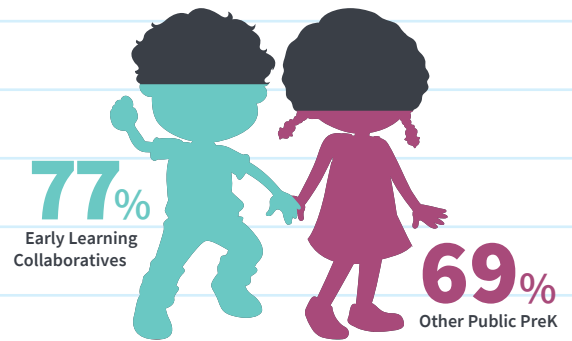


TARGET SCORE:
498

2

Percentage of Pre-K Students Meeting Kindergarten-Readiness Score

YEAR	ELC	OTHER PUBLIC PRE-K
2019	77%	69%
2018	76%	67%
2017	78%	66%
2016	71%	69%
2015	59%	63%



STUDENTS MEETING
Kindergarten-Readiness Score in 2019

ELCs continue to achieve higher rates of kindergarten readiness among students than other public pre-K programs



View 2018 pre-K assessment results at mdek12.org/OPR/Reporting/Assessment/2018-19

3



The National Institute for Early Education Research (NIEER) recognizes Mississippi's Early Learning Collaboratives in its annual State of Preschool report as **ONE of only seven states** in the nation that **meet all or most quality standards for early childhood education.**

4



Individuals or corporations **donated close to \$3.8 million to Early Learning Collaboratives in 2018**, an increase from \$1.6 million in 2016. Contributors are eligible to **receive a 1:1 state tax credit** for the donated amount up to \$1 million.



STRENGTHENING MISSISSIPPI'S PRE-K SYSTEM

Increasing access to high-quality early childhood education is one of Mississippi's key strategies for **improving student outcomes**. To help **strengthen instruction** in all pre-K settings, public and private, the Mississippi Department of Education offers, at no cost, all its **early childhood education resources and professional development** opportunities to early childhood education providers in any setting, public or private. In 2018-19, the Mississippi Department of Education trained **1,764** early childhood teachers and administrators.

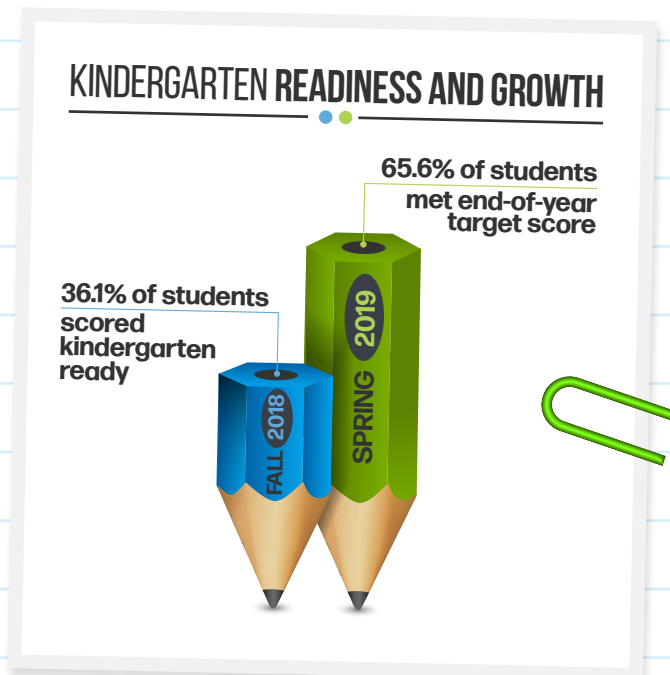
Early Childhood Coaches

Thanks to a **\$6 million grant** from the W.K. Kellogg Foundation, the Mississippi Department of Education hired a team of early childhood **coaches** to help build a high-quality early childhood education infrastructure throughout Mississippi. The coaches support teachers statewide in a variety of pre-K settings to implement developmentally-appropriate practices in their classrooms.

Major grant activities include professional development and coaching support, pre-K program evaluation to ensure program quality and student progress, the implementation of developmental assessments for students, and assistance with increasing **parents' participation** in their children's education.

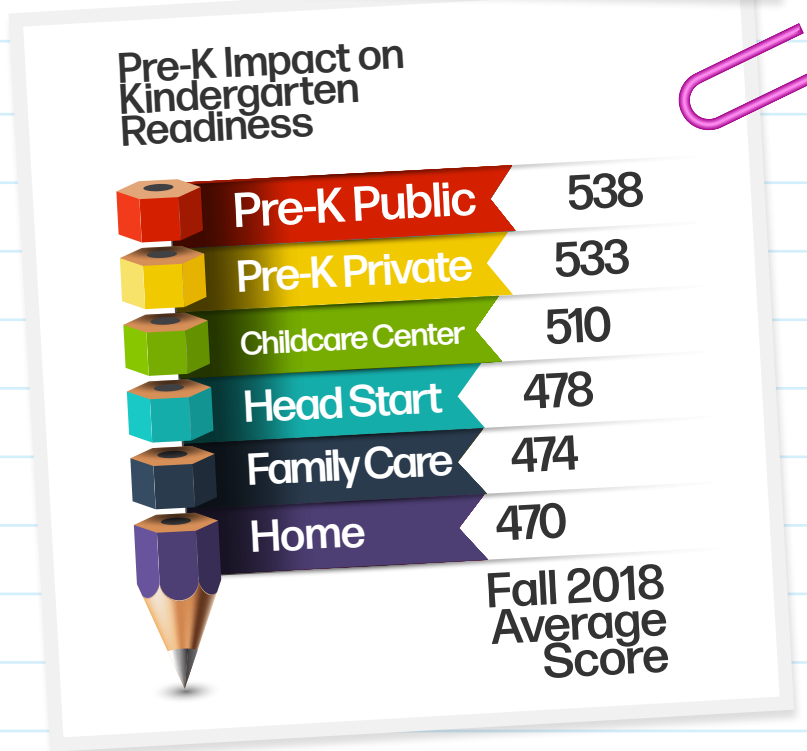
KINDERGARTEN READINESS AND GROWTH

Kindergarteners take a Kindergarten Readiness Assessment in the fall of each school year that measures whether they have the foundational literacy skills to be successful in kindergarten. The target score that indicates kindergarten readiness is 530. In fall 2018, 36.1% of students scored kindergarten ready. When kindergarteners were retested in spring 2019, 65.6% of students met the end-of-year target score. **Every district in the state showed progress among their kindergarten students.**



Pre-K Impact on Kindergarten Readiness

The Mississippi Department of Education collects information about kindergarteners' prior year experience and pairs it with the statewide Kindergarten Readiness Assessment results. The analysis shows that students who attended public or private pre-K programs **have stronger literacy skills** than students who did not attend pre-K. On average, students who had attended pre-K scored above the 530 target score that indicates kindergarten readiness.



EVERY SCHOOL
HAS EFFECTIVE
TEACHERS AND
LEADERS

GOAL

4



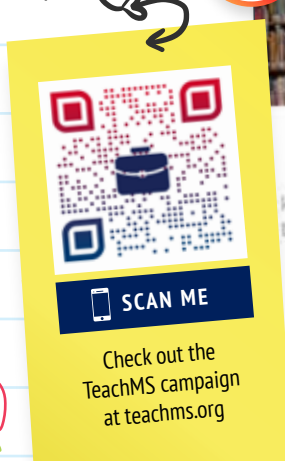
Mississippi launched a teacher recruitment campaign, TeachMS, to encourage high school and college students and professionals seeking a new career to consider teaching.

TeachMS elevates the teaching profession with inspirational stories from Mississippi teachers and offers aspiring teachers step-by-step instructions for preparing for the profession.

The TeachMS campaign supports the Mississippi Department of Education's new teacher recruitment team, who travel the state visiting high schools and colleges and assist professionals who want to transition to the field of education.



YOU
can
empower
AND
inspire
generations
of change



TEACHERS:
Send your inspiring story to teachms@mdek12.org

TEACHER RESIDENCY PROGRAM AND PERFORMANCE-BASED LICENSURE PILOT

The Mississippi Department of Education secured a \$4.1 million grant from W.K. Kellogg Foundation to help increase the number of qualified teachers entering and remaining in the profession. The funds support the **MISSISSIPPI TEACHER RESIDENCY**, which is a two-year program that combines coursework and on-the-job trainings to prepare prospective educators for the teaching profession. The Mississippi Department of Education recruited and placed **35 teacher residency candidates** in four Mississippi school districts in the 2018-19 school year. The grant also supports the **PERFORMANCE-BASED TEACHER LICENSURE PILOT PROGRAM**, which is helping **73 candidates** in seven school districts become **fully licensed**.



35
CANDIDATES



73
CANDIDATES



PROFESSIONAL DEVELOPMENT

The Mississippi Department of Education professional development team helps build the capacity of teachers through its schedule of free professional development opportunities and direct training to districts and schools that need additional support in English Language Arts, mathematics, special education, science, and cross-curricular subjects.



NATIONAL BOARD-CERTIFIED TEACHERS (NBCT)

4,337

Mississippi teachers have achieved National Board Certification

855

Mississippi teachers are currently candidates for National Board Certification



National Board Certification is the highest mark of accomplishment in the teaching profession and demonstrates that teachers have attained the knowledge and skills necessary to prepare students for 21st century success. Board certification can enable teachers to take on leadership roles – such as mentoring, leading professional development efforts, and advocating for policy changes – that allow them to advance their careers while staying in the classroom.

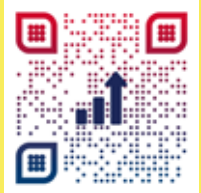


Mississippi provides significant support for teachers seeking Board certification and provides an **annual salary supplement of \$6,000** to eligible NBCTs for the life of the National Board certificate. In 13 counties, an additional \$4,000 stipend is available.

EVERY
COMMUNITY
EFFECTIVELY
USES A
WORLD-CLASS
DATA SYSTEM
TO IMPROVE
STUDENT
OUTCOMES

GOAL

5



SCAN ME

View the Mississippi Succeeds Report at msrc.mdek12.org

REPORT CARD

The Mississippi Succeeds Report Card is an interactive online tool designed to help parents and communities more easily evaluate schools across the state. The tool includes detailed information about each school's and district's academic performance and other indicators of program quality.

Among its many features, the Mississippi Succeeds Report Card includes:

- Academic performance by student groups
- Advanced course participation
- Educator workforce data
- Chronic absenteeism rates
- Preschool enrollment
- Post-secondary enrollment
- Per-pupil expenditures
- Data maps



The report card has received more than **788,351** PAGE VIEWS

since it launched in October 2018



**EVERY SCHOOL
AND DISTRICT
IS RATED “C”
OR HIGHER**

GOAL

6

SCHOOL AND DISTRICT GRADES

Mississippi schools and districts earn annual grades on an A through F scale. The grading system considers several indicators, including how well students perform on state assessments, whether students are showing improvement from year to year and whether students are graduating within four years. The system also factors in how well schools are helping their lowest achieving students make progress toward proficiency. At the high school level, accountability measures include students' ACT scores and participation and achievement in advanced coursework.

IMPROVED SCHOOL LETTER GRADES 2018 TO 2019

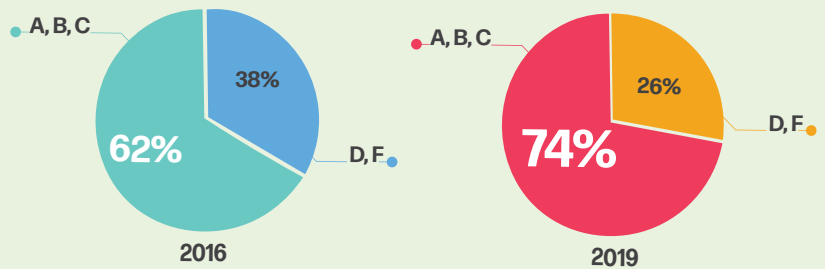
SCHOOL GRADE	2018	2019
A	181	196
B	247	280
C	191	169
D	165	153
F	109	77
TOTAL	893	875

IMPROVED DISTRICT LETTER GRADES 2018 TO 2019

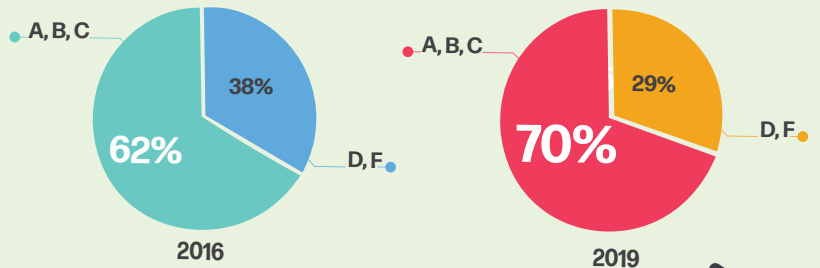
DISTRICT GRADE	2018	2019
A	18	31
B	42	34
C	37	34
D	27	22
F	20	19
TOTAL	144	140

Note: Grades for charter schools and special schools are included in charts for school grades only.

SCHOOL GRADE IMPROVEMENTS



DISTRICT GRADE IMPROVEMENTS



258 schools & 46 districts
IMPROVED
 letter grades
 in one year

Schools and districts have made significant improvements since the current state assessment program was first implemented in 2016, with the **number of schools and districts earning an A more than doubling.**

2019 CELEBRATION OF EXCELLENCE

The 2019 Celebration of Excellence Tour kept State Superintendent Carey Wright busy with visits to all **31 SCHOOL DISTRICTS** that earned an A for academic achievement in 2018-19. The number of A-rated districts has more than doubled – rising from 14 to 31 – since the inaugural celebration tour in 2016.



Like



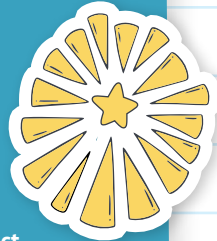
Comment



Share

Mississippi's A-RATED School Districts

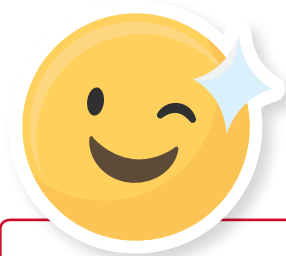
2018-19



- Alcorn School District
- Amory School District
- Bay St. Louis Waveland School District
- Biloxi Public Schools
- Booneville School District
- Clinton Public Schools
- DeSoto County Schools
- Enterprise School District
- Gulfport School District
- Hancock County School District
- Harrison County School District
- Jackson County School District
- Lafayette County School District
- Lamar County School District
- Long Beach School District
- Lowndes County School District
- Madison County Schools
- New Albany School District
- Newton County School District
- Ocean Springs School District
- Oxford School District
- Pass Christian Public School District
- Pearl School District
- Petal School District
- Pontotoc City School District
- Poplarville School District
- Rankin County School District
- Stone County School District
- Tishomingo County School District
- Union County School District
- Union Public School District



State Superintendent's
STUDENT ADVISORY COUNCIL



Carey M. Wright, Ed.D.

State Superintendent of Education

MISSISSIPPI DEPARTMENT OF EDUCATION
Office of Communications and Government Relations
601-359-3515 | mdek12.org



**MISSISSIPPI
DEPARTMENT OF
EDUCATION**

HAVE
COURAGE
AND
be KIND



MAKE
EVERY
STEP
COUNT

