

Maintaining an Effective P16 Community Engagement Council in a Virtual World

Implementing Your P16 Timeline

October 6, 2020



BoNita Harris, Ph.D.

Office Director II
Office of School Improvement

VISION

To create a world-class educational system that gives students the knowledge and skills to be successful in college and the workforce, and to flourish as parents and citizens

MISSION

To provide leadership through the development of policy and accountability systems so that all students are prepared to compete in the global community

MISSISSIPPI STATE BOARD OF EDUCATION
STRATEGIC PLAN GOALS

1

All Students Proficient and Showing Growth in All Assessed Areas



2

Every Student Graduates from High School and is Ready for College and Career



3

Every Child Has Access to a High-Quality Early Childhood Program



4

Every School Has Effective Teachers and Leaders



5

Every Community Effectively Uses a World-Class Data System to Improve Student Outcomes



6

Every School and District is Rated “C” or Higher



Learning Targets

- ❑ Review rules and regulations governing P-16 Councils
- ❑ Review P-16 implementation timeline for P-16 Councils
- ❑ Explore strategies to continue to build strong, working relationships between P-16 Councils and the community

Overview: P-16 Community Engagement Council

- P-16 stands for Pre-Kindergarten through higher education (or year 16 of education)
- P-16 Councils are **INDEPENDENT** groups made up of community members, leaders, and educators
- P-16 Councils examine policies and suggests actions to the school district or school administration
- P-16 Councils are created based on governance by state law and 2020 MS Public School Accountability Standards

2020 MS Public School Accountability Standard

- ❑ **12.** There is an **organized** system to encourage community involvement, parental communication, and business partnerships in school district decision-making. {MS Code § 37-7-337} (Districts meeting the Highest Levels of Performance are exempted.)
- ❑ **12.1** A **school district** that has been **designated as Failing (F)** as defined by the State Board of Education **shall establish a community-based pre- kindergarten through higher education (P-16) council.** {Miss. Code Ann. § 37-18-5(4)}
- ❑ **12.2** A **district and/or a school designated as a D or F shall establish a community-based pre- kindergarten through higher education (P-16) council.**

WELCOME

P-16: Implementation Timeline

P-16: Implementation Timeline

P-16 Implementation Timeline	
September 2019	<p>Release of Accountability Data</p> <ul style="list-style-type: none"> <input type="checkbox"/> A district that has been designate as Failing (F) as defined by the State Board of Education shall establish a community-based pre-kindergarten through higher education (P-16) Council <input type="checkbox"/> A district and/or school designated as a D or F shall establish a community-based pre-kindergarten through higher education (P-16) Council
December 2019	<p>Initiator's Meeting (Stage 1)</p> <ul style="list-style-type: none"> <input type="checkbox"/> District and Community Representatives meet <input type="checkbox"/> Develop P-16 Mission Statement <input type="checkbox"/> Agreement developed on number of representatives for each constituent category <input type="checkbox"/> Determine the initial public meeting date, time and location
February 2020	<p>Selection Meeting (Stage 2)</p> <ul style="list-style-type: none"> <input type="checkbox"/> Community members from all P-16 constituent categories meet <input type="checkbox"/> Community is briefed on the purpose and rules/laws governing the P-16 Council <input type="checkbox"/> Community members split into six (6) constituent categories <input type="checkbox"/> Members in each constituent category select their representatives for the P-16 Council
April 2020	<p>Formation Meeting (Stage 3)</p> <ul style="list-style-type: none"> <input type="checkbox"/> Constituent category representatives meet as newly independent P-16 council <input type="checkbox"/> P-16 members select officers <input type="checkbox"/> P-16 Council selects date of next P-16 meeting <input type="checkbox"/> P-16 members seek introduction at next school board meeting <input type="checkbox"/> P-16 Council becomes independent of the local school district or school
August 2020	<p>Reminders</p> <ul style="list-style-type: none"> <input type="checkbox"/> Set calendar for continuation of meeting dates and times (i.e., monthly) <input type="checkbox"/> Revisit mission statement and bylaws <input type="checkbox"/> Ensure the council is representative of a broad-section of the community (constituent categories) <input type="checkbox"/> Continue making assessments of the strengths and limitations for the school district and its schools as a basis for recommending effective approaches to create quality, healthy schools

P-16: Implementation Timeline

September 2019 – *Released Accountability Data for the 2019-2020 School Year*

- ✓ A district that has been **designate as Failing (F)** as defined by the State Board of Education shall establish a community-based pre-kindergarten through higher education (P16) Council
- ✓ A **district and/or school designated as a D or F** shall establish a community-based pre-kindergarten through higher education (P16) Council

P-16: Implementation Timeline

December 2019 - *Initiator's Meeting*

- ✓ District and Community Representatives meet
- ✓ Develop P-16 Mission Statement
- ✓ Agreement developed on number of representatives for each constituent category
- ✓ Determine the initial public meeting date, time and location

P-16: Implementation Timeline

February 2020 - Selection Meeting

- ✓ Selection Meeting (Stage 2)
- ✓ Community members from all P-16 constituent categories meet
- ✓ Community is briefed on the purpose and rules/laws governing the P-16 Council
- ✓ Community members split into six (6) constituent categories
- ✓ Members in each constituent category select their representatives for the P-16 Council

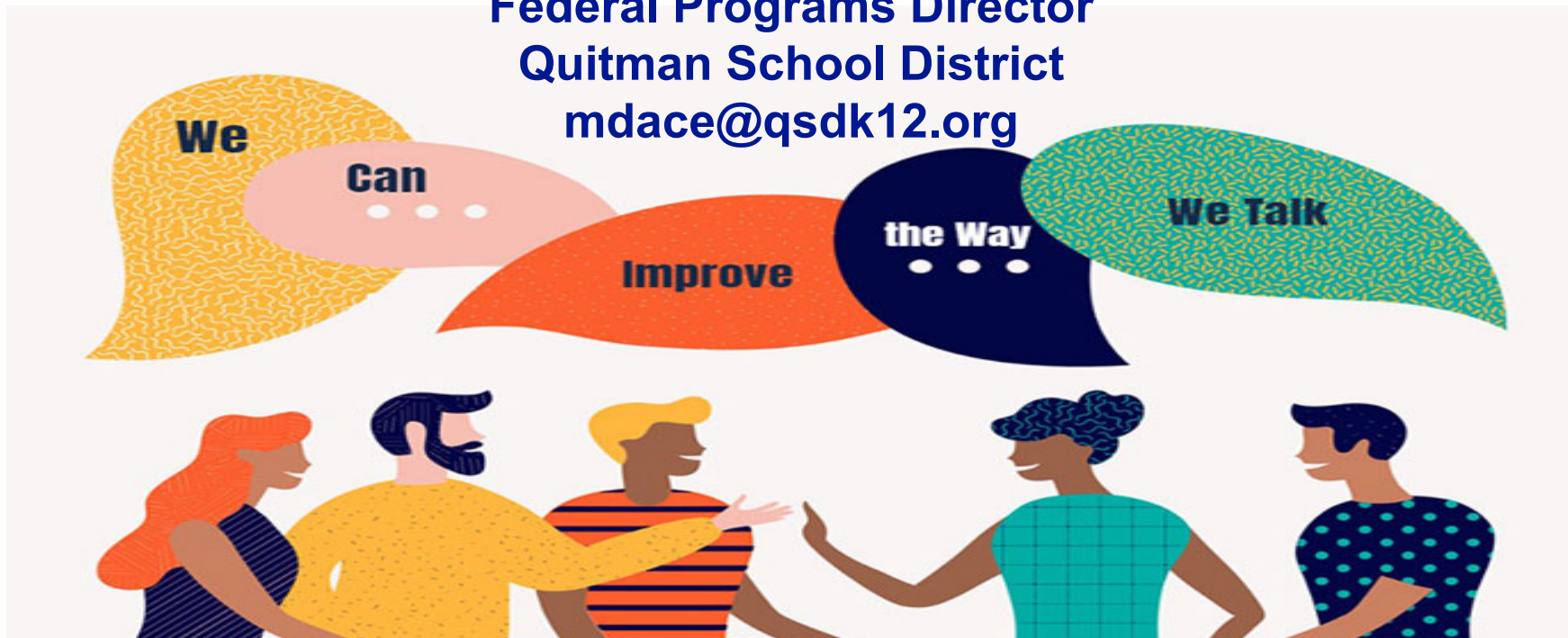
P-16: Implementation Timeline

April 2020 (Tentatively) - Formation Meeting

- ✓ Constituent category representatives meet as newly independent P-16 council
- ✓ P-16 members select officers
- ✓ P-16 Council selects date of next P-16 meeting
- ✓ P-16 members seek introduction at next school board meeting

Strategies to Build a Strong P-16 Council

Conversation with Dr. Minnie Dace
Federal Programs Director
Quitman School District
mdace@qsdk12.org



Strategies to Build a Strong P-16 Council

❑ What is the format/structure of P-16 meetings in the age of COVID?

- Abiding by P-16 guidelines/bylaws
- Each constituency group was asked to contact current members and to find replacements if needed
- REMINDER: “No Politics” and “No Collection of Money”

Strategies to Build a Strong P-16 Council

- ❑ **How are the P-16 council members finding balance (attending meetings, participation impacted) in a virtual world?**
 - Meetings are currently face-to-face
 - Larger space to offer social distance (QHS Library), masks required, temperature check and COVID screener
 - If requested: Meetings offered via zoom (Federal Programs Director) or google classroom (teacher representative) with the P-16 President hosting the meeting
 - Group Me app to send group reminders, etc. by the P-16 Secretary

Strategies to Build a Strong P-16 Council

❑ How are you keeping with the original mission, by-laws and goals set forth by the Council?

- The original mission is still in the forefront
- Bylaws were revised September 29, 2020 from our February meeting and is waiting on board approval in the October 12, 2020 board meeting
- Bylaws set the tone/atmosphere of our P-16 Council
- Templates are available

Strategies to Build a Strong P-16 Council

What is the focus or context of your meetings? Have they changed? And if so, how?

- Review/Discuss policies/procedures in the following areas: student success, parental engagement, community and parent concerns
- School Safety
- School Improvement
- School Data/Accountability
- Making suggestions that will improve relationships between parents and schools

Strategies to Build a Strong P-16 Council

□ How is the school board informed of any suggestions lifted from the P-16 Council?

- P-16 President attends and gives a monthly report to the school board
 - Report consist of topics, concerns, suggestions and outcomes
 - If absent, FPD will give the monthly report/concerns/suggestions/outcomes
 - Most suggestions/concerns are handled by the superintendent unless a policy has to be revised/changed

Strategies to Build a Strong P-16 Council

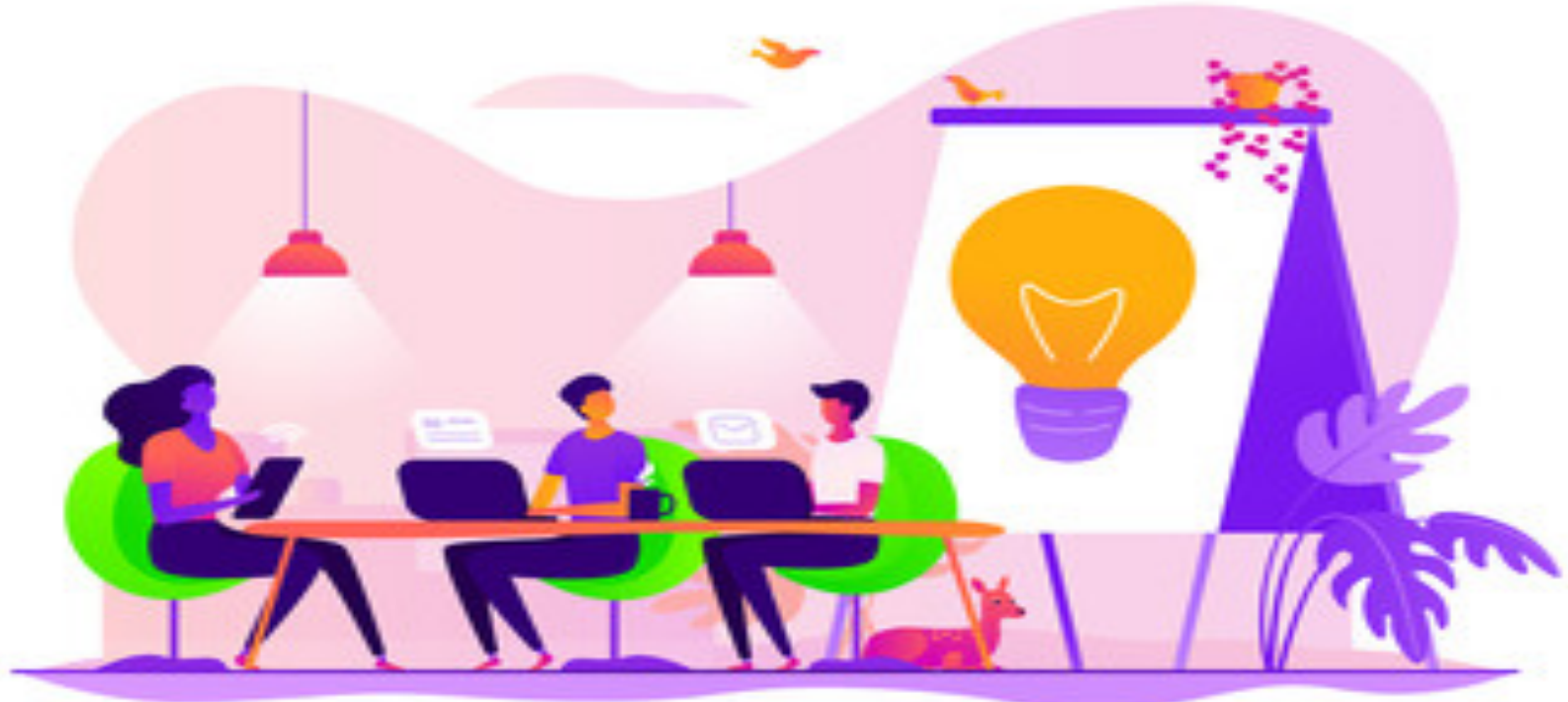
- ❑ **How is the school board informed of any suggestions lifted from the P-16 Council?**
 - Minutes are recorded from each P-16 Council meeting
 - Federal Programs Director and District Parent Liaison serves as the liaison between the P-16 Council and the District
 - FPD discusses all suggestions/concerns with the Superintendent
 - FPD discusses all suggestions/concerns with necessary administrator(s)/department(s)
 - Superintendent attend meetings when possible

Strategies to Build a Strong P-16 Council

- ❑ **How is your P-16 engaged with the district to be informed on student progress towards achievement, district initiatives or any area where the P16 can be of support?**
 - Curriculum Coordinator presents district/school data
 - Administrators discuss school improvement plan and strategies
 - Share school improvement board report (quarterly) that's submitted to school board and MDE
 - Federal Programs Director/Superintendent discuss district initiatives (PBIS, MTSS, Leader in ME, Community Book Read)
 - Community projects are shared



P-16 Community Engagement Council



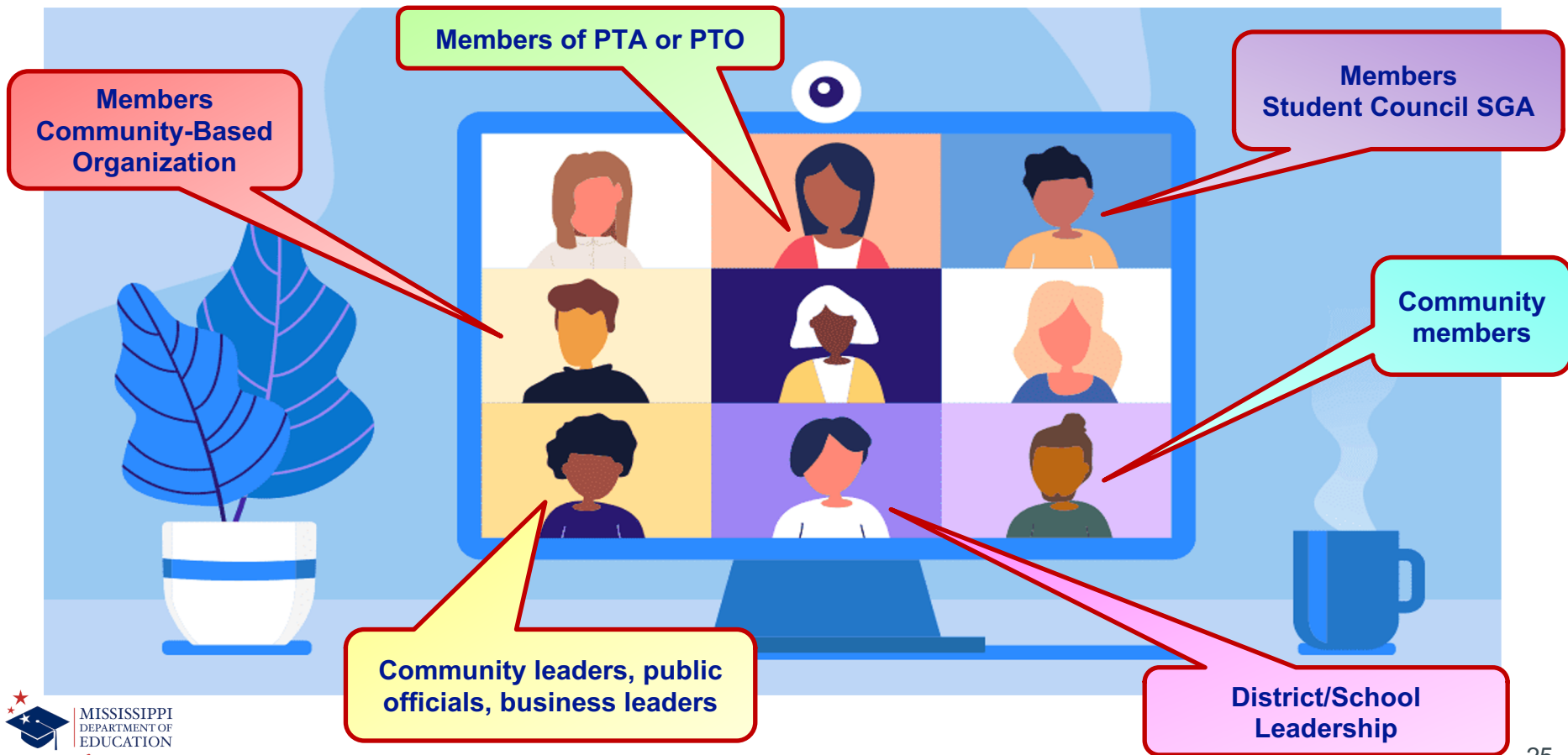
Talk – Share – Discuss: What Resonates? Why?

P-16: Implementation Timeline

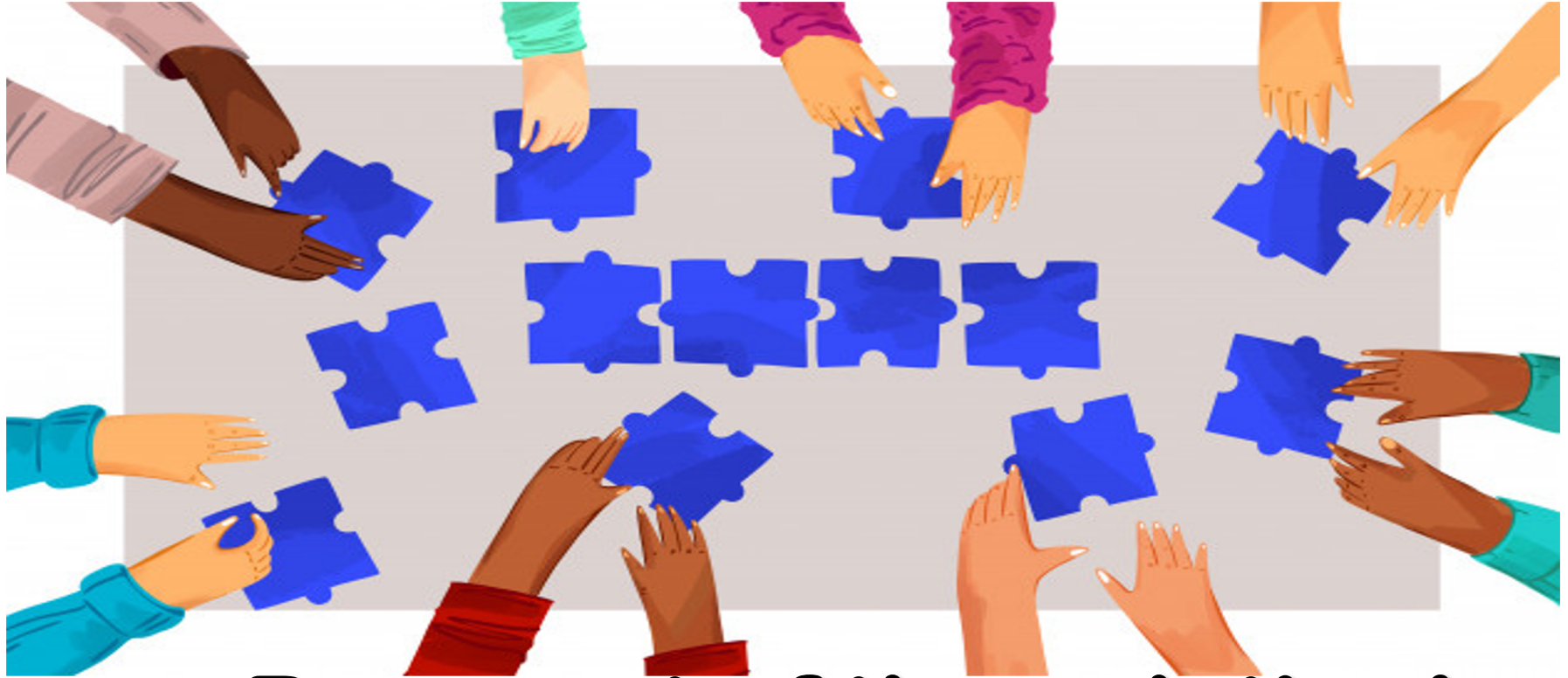
Reflection Points: What's Next?

- ✓ Set calendar for continuation of meeting dates (i.e., monthly)
- ✓ Revisit mission statement and bylaws
- ✓ Ensure the council is representative of a broad-section of the community (Constituent Categories)
- ✓ Continue making assessments of the strengths and limitations for the school district and its schools as a basis for recommending effective approaches to create quality, healthy schools

Virtual Meeting Tips for the P-16 Council!



P-16: Implementation Timeline



Be a part of the solution!

P-16 Resources

General Information 601-359-3513

Academic Education 601-359-3077 Staff	Educator Licensure 601-359-3483 Staff	Mississippi School for Mathematics and Science 662-329-7360 Staff
Accountability 601-359-1763 Staff	Educator Misconduct 601-359-2742 Staff	Procurement 601-359-5716 Staff
Accounting 601-359-3525 Staff	Educator Preparation 601-359-3631 Staff	Professional Development 601-359-2957 Staff
Accreditation 601-359-3764 Staff	Educator Talent Acquisition 601-359-3631 Staff	Program Evaluation 601-359-3857 Staff
Budget and Planning 601-359-3923 Staff	Elementary Education and Reading 601-359-2586 Staff	Public Reporting 601-359-3857 Staff
Career and Technical Education 601-359-3974 Staff	Federal Programs 601-359-3499 Staff	Safe and Orderly Schools 601-359-1028 Staff
Chief of Operations 601-359-5254 Staff	Grants Management 601-359-3525 Staff	School District Consolidation 601-359-3077 Staff
Child Nutrition 601-576-5000 Staff	Healthy Schools 601-359-1737 Staff	School Financial Services 601-359-3294 Staff
Communications and Government Relations 601-359-3515 Staff	Human Resources 601-359-3511 Staff	School Improvement 601-359-1003 Staff

School Improvement

The Mississippi Department of Education identifies schools for additional assistance and support, which includes professional development, leadership coaching, additional funding, and assistance to support the school's transformation goals. We identify the schools that need the most assistance for their students to have the same opportunities for growth and success that exist for students in other schools. The Office of School Improvement (OSI) is responsible for supporting the systemic improvement and turnaround efforts of the lowest-performing schools.

The Every Student Succeeds Act (ESSA), a federal law, requires that each state identify two types of schools for support and improvement:

- Comprehensive Support and Improvement (CSI) - [CSI Quick Reference](#)
- Targeted Support and Improvement (TSI) - [TSI Quick Reference](#)
 - Additional Targeted Support and Improvement (ATSI)

MISSISSIPPI SCHOOLS: GUIDANCE FOR THE 2020-21 SCHOOL YEAR

MS SUCCEEDS MEASURES OF INTERIM PROGRESS FOR READING/LANGUAGE ARTS AND MATH

Measures of Interim Progress

UPCOMING VIRTUAL MEETINGS

September 29, 2020

Topic: Fiscal and Program Monitoring – School Improvement. This informative webinar outlines the monitoring process, schedule, and review of the Monitoring Tool that will be used to address implementation of school improvement activities. ([Webinar](#)) ([PowerPoint](#))

OSI Program Monitoring Guidance Documentation

- FY20 OSI Program Monitoring Tool ([PDF](#))

Time: 1:00 PM – 2:30 PM

School Improvement

601-359-1003
Staff
FAQ

Services

Evidence-Based Programs
Mississippi Instructional
Materials Matter
Revision Request
School Improvement

Links

Resources

Comprehensive and Targeted
School Improvement Schools
CSI Quick Reference
TSI Quick Reference
Sharing What Works
Identifying Evidence-Based
Programs
P-16 Community-Based Council
Four Domains: A Framework for
Rapid School Turnaround

P-16 Community-Based Engagement Council

Guidelines for P-16 Community Engagement Councils Mission

Community Engagement Councils, also known as P-16 Councils, are an essential opportunity to build this process. The Community Engagement Councils are intended to be community-based and independent. The Councils are charged with the duty and responsibility to build strong, healthy communities. In order to build strong, healthy communities it is necessary, among other things, to create a quality public education delivered to students in healthy schools that are accessible to all children, regardless of race, class, status, gender or disability. Since these goals cannot be achieved within a year or two the Councils will need to develop a "comprehensive plan" that attempts to answer these two questions: a) "What will a strong, healthy community, rooted in a quality public education system, need to look like 10, 15 or 20 years from now?" b) "What do we have to do this year, next year and the years that follow in order to build this process in the right direction?"

P-16 Guidance Documentation

- Pilot: Guidelines for P-16 Community Engagement Councils ([Document](#))
- How to Implement P-16 Community Engagement Council: Answering Frequently Asked Question ([Document](#))
- A How To Guide for Establishing P-16 Community Engagement Councils: Building Your P-16 ([Document](#))

October 2020

- Maintaining an Effective P-16 Community Engagement Councils in a Virtual World. ([PowerPoint](#))
- P-16 Community Engagement Council Implementation Timeline ([Document](#))

January 2020

Implementing Effective P-16 Community Engagement Council
Overview of P-16 Guidelines ([Webinar](#))
Part I: Building Your P-16 ([PowerPoint](#))

School Improvement

601-359-1003
Staff
FAQ

Services

Links

Resources

Comprehensive and Targeted
School Improvement Schools
CSI Quick Reference
TSI Quick Reference
Sharing What Works
Identifying Evidence-Based
Programs
P-16 Community-Based Council
Four Domains: A Framework for
Rapid School Turnaround
2019 Access for All Guide
Documents and Forms

On the scale of memes, how are you feeling?





CROSSROADS

How Was Today's Training?





MISSISSIPPI
DEPARTMENT OF
EDUCATION

Ensuring a bright *future* for every child

BoNita Harris, Ph.D.

Director of Monitoring and Support
Office of School Improvement
601.359.1003

bonitaharris@mdek12.org